



1 x 10 Beam (8)



1 x 10 Beam (8)



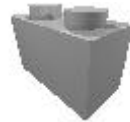
1x8 Beam (8)



1x8 Beam (8)



**1x2 Brick (20)
1x2 Brick Green (4)
1x2 Brick Yellow (4)**



**1x2 Brick (20)
1x2 Brick Green (4)
1x2 Brick Yellow (4)**



Liftarm 1x11.5 Double Bent (4)



Liftarm 1x11.5 Double Bent (4)



Liftarm 1x9 Bent (2)



Liftarm 1x9 Bent (2)



2x3 brick with curve (4)



2x3 brick with curve (4)



**1x2 slope (12, 4 yellow)
2x2 slope (3 green)**



**1x2 slope (12, 4 yellow)
2x2 slope (3 green)**