



## From Jeff Fenske, President and Director-at-Large

Hello to all,

Our spring show season should be starting even in colder areas. Here in central California, we have been going for a while now. Hope you had time this winter to get all your projects done and are able to enjoy the spring weather and get out there with your tractors and engines.

### [National EDGE&TA Facebook Page](#)

We have just started a new [National EDGE&TA Facebook](#) page. We want to promote our club and all the branches. Go on [Facebook](#) to the [Early Day Gas Engine & Tractor](#) page and [Follow](#) us for lots of great information about upcoming events and photos and stories of shows and parades and events that have happened. Tell your branch about this and encourage everyone to [Follow](#) us as following and sharing gives us more exposure. We are trying to get new members as every year we are losing the older members. If any of you have any fliers of your upcoming events or pictures that you would like to put on our [Facebook](#) page, just contact any of the Directors and they can put them on for you.

All our contact information is on the last page of this newsletter and on the Administration page of our website, [www.edgeta.com](http://www.edgeta.com) .

### [Officer Update and National Dues and Membership](#)

It's time to update your branch officers. Just go on to our website, [www.edgeta.com](http://www.edgeta.com), and on the [Forms](#) page click on the [Officer Update](#) form then fill out the information. If the officer is the same, you can just put same instead of typing out all the information. **It's also time to get your EDGE&TA dues into Tina. The dues remain the same at \$20 per person for the year starting April 15, 2026, till April 14, 2027.** Tina sent the 2027 stickers out in November to facilitate the branches that have their annual dinner/meetings around the first of the year.

## Certificates of Additionally Insured and Proof of Insurance Certificate

There have been many requests for Certificates of Additional Insured lately that have put the needed by date, then called a week before that date wondering why they had not received the Certificate yet. Please submit your request at least 20 business days before the date you need it. Then you should get the Certificate by that date. The insurance company processes the Certificates by The NEEDED BY date, so be sure that whoever in your branch requests a Certificate puts down the correct date. We are currently in negotiations with the insurance company for the policy year starting April 15<sup>th</sup>.

## Regional and National Shows for 2026 and 2027

The Regional Show for the SW is coming up soon.... April 24<sup>th</sup>-25<sup>th</sup> in Red Bluff, California hosted by Branch 114. If you get a chance, try to go to this one as it's always a great show. There will be no Regional Show in the NW Region as that is where the National Show is this year at Huntley, Montana on August 15<sup>th</sup>-16<sup>th</sup>. Branch 29 is hosting the National and they always have a great educational show with wheat threshing, grinding, and other demonstrations. They have steam traction engines and a steam engine room. Lots to see and do there. We have been looking for a Regional Show in the Eastern and Central Regions for this year. If you would like to host these shows, please contact your Regional Director. We are also actively looking for a National Show in the SW Region for 2027.

## Safety Regulations

Now that our busy show season has started, remember to follow all the Safety Regulations. Make sure your Safety Officer has read all the requirements which are on the EDGE&TA website. It is always a good idea to have a written copy of the rules at all shows. These can be printed on our website.

## Welcome New Branches

We welcome New Branch 268, The Treasure Valley Antique Power Association, from Greenleaf, Idaho to our EDGE&TA family. Also, we welcome New Branch 269, River Styx Vintage Power, from Wadsworth, OH!

## Pass this Newsletter Along

Since each Branch President is receiving this newsletter via email it is up to you to forward this on to your branch email list. If you cannot do this, would you advise all your members that they can read every National newsletter on our website, [www.edgeta.com](http://www.edgeta.com).

Until the next time, Remember, Play Safe, Stay Safe

**Jeff Fenske, President and Director at Large**

Now for the fun part, here are a few pictures from Kings County Farm Day with 2,000 third graders watching the engines run from in front of the ropes.

Jeff Fenske (Branch 8), Jim Gregory (Branch 209), and Jim's 1947 John Deere



And more pictures at Selma Swap Meet Show! Branch 8 members John Strecker, Richard Loven and Jeff Fenske.



# From Ron Hanson, Vice President and Southwest Regional Director

Hello All,

It is nice to be through winter and now into springtime.  
Soon we will be in full swing with the 2026 Antique Tractor & Engine show season.  
Please be mindful of SAFETY and have a FUN Time.

## 2026 Southwest Regional Show Host

Branch 114, Red Bluff California has volunteered to host the 2026 SW Regional show this year. It will be held on April 24-25, 2026, at the Tehama County Fairgrounds, Red Bluff California. They have previously hosted EDGE&TA shows and do a GREAT event.

I'm looking forward to seeing you there.

## 2027 Southwest National Show Host Needed

The SW Region is looking for a Host branch for the 2027 EDGE&TA National show.  
Please reach out to me if your branch is interested in hosting this National Show.

## Hall of Fame Nominations for 2026

**HALL of FAME Nominations** are still open for 2026. If you know of a member worthy of receiving **EDGE&TA** National Hall of Fame recognition, please submit them for nomination. Further instructions for nominations are on the **EDGE&TA** National website.

## National EDGE&TA Facebook Page

If you are a person that does social media. The **EDGE&TA** National now has a New [Facebook](#) page dedicated to this hobby. Every branch will have the opportunity to be able to post on this new page. Look for our new page on [Facebook](#).

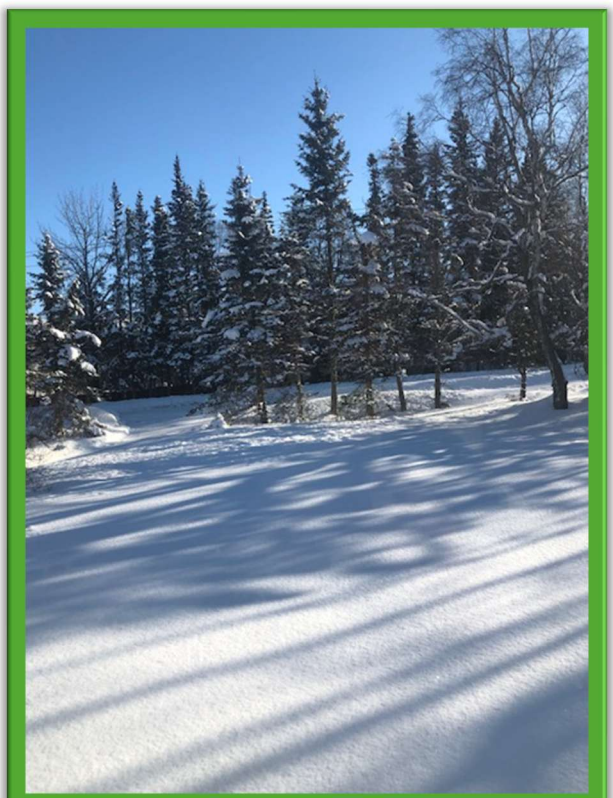
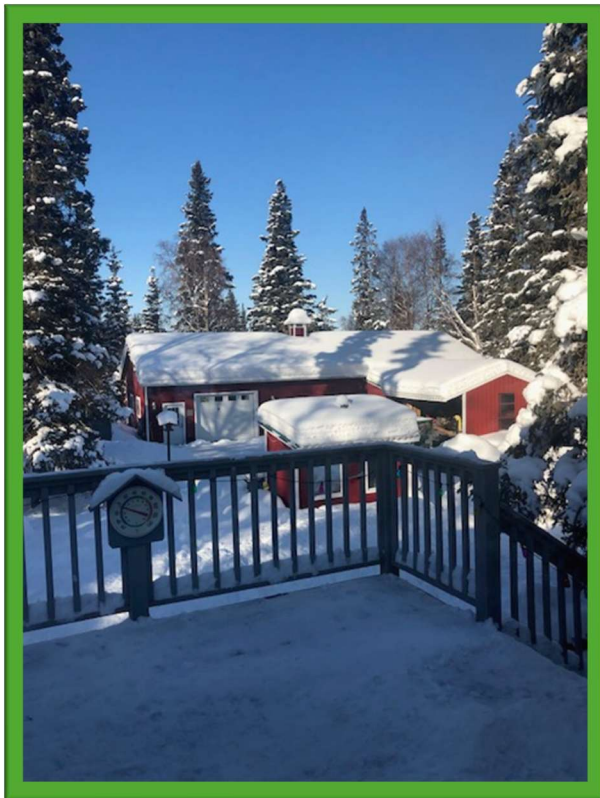
Ron Hanson, National Vice President/Southwest Director

## From Mike Pollock, Northwest Regional Director

Greetings from the Still Frozen North!

Whoa, here it is...almost Spring! Many of you are already enjoying the springtime weather...Lucky you! The March 15<sup>th</sup> photos of our yard explain why we here in the Northland are having difficulty seeing spring “just around the corner”! On the bright side, we are enjoying the additional daylight, and we know this winter thing shall pass!

Branch 52’s show season started in February by participating in a parade during Anchorage’s Fur Rendezvous Winter Carnival. Only 3 hardy souls from our group showed up to deal with the subzero temperatures!



### Information for you to consider:

President Jeff mentioned EDGE&TA’s [Facebook](#) site. We’re just getting things rolling, but it’s growing fast! If you have info you would like to post about your Branch, you can email it to me and I will post it. This venue will let many more folks know about EDGE&TA and what we do.

## The 2026 National Show and Regional Show

The **2026 National Show** is being hosted by **Branch 29** in Huntley, Montana on August 15 &16. I have personally been to 2 of their shows and they are first class! Plan to attend.... you won't be disappointed!

**2027 Regional Show.** Because the National Show is being held in the Northwest Region, we have no NW Regional Show this year. This gives us time to think about next year. Talk it over at your next meeting. A Regional show is easy to host, and you have time to plan!

## Northwest Regional Director

Election to this position is open for the next 3-year term. As I mentioned in the last Newsletter, I plan to run for another term. However, I do encourage you to consider running also. All the Board positions are important for the continued success of EDGE&TA. And there is an opportunity to meet a lot of nice folks that have the same interest in old iron. For more info, go to Article 4, Section 1 of the By-Laws for instructions on how to apply. Note your resume should be submitted to Tina Brown not later than May 15<sup>th</sup>.

## Reminders:

Be sure to **update your Branch information** on the website.

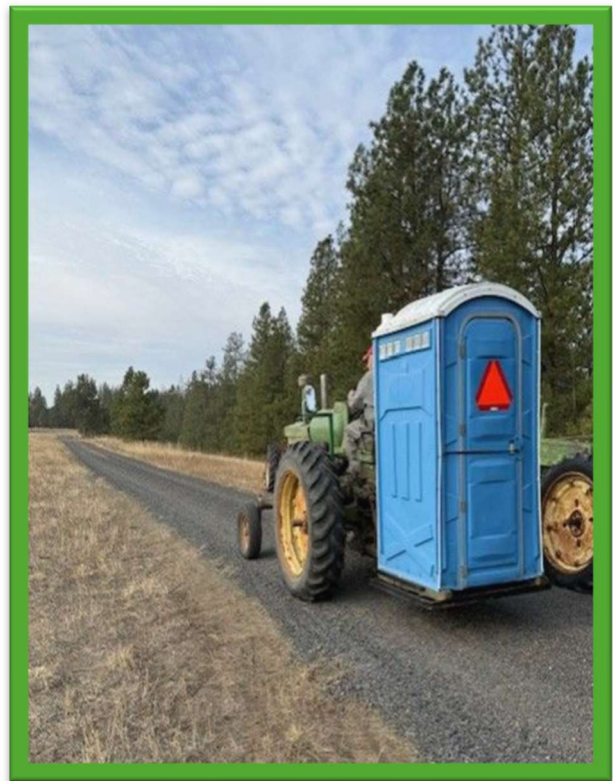
Presidents, please **email the Newsletter on to your members**. If you need help with that, let me know.

You only have a few more days to submit that deserving person in your Branch for **EDGETA's Hall of Fame**. Go to the Hall of Fame section of our website and find the directions for submitting someone for this special recognition. Submittals should be made prior to April 18<sup>th</sup>.

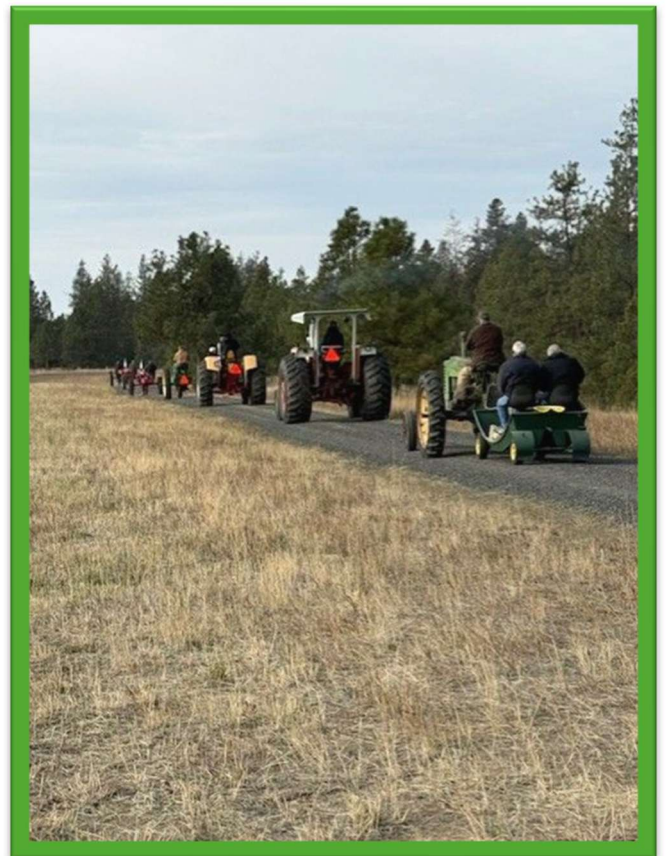
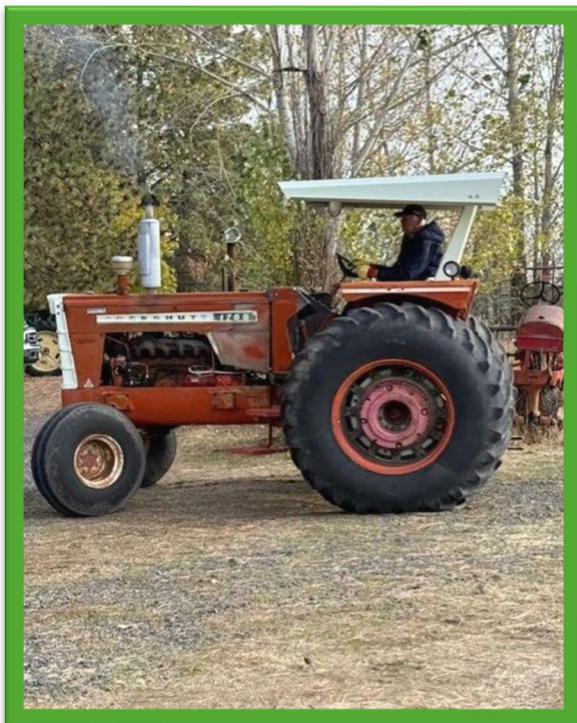
## What's going on in the Northwest Region?

**We would like to welcome Branch 268 of Greenleaf, Idaho.** Brent Fillmore is President of 268 and Andrew Becksler is Vice President. Andrew is also the Branch's contact person. You can reach Andrew at 484-336-5525.

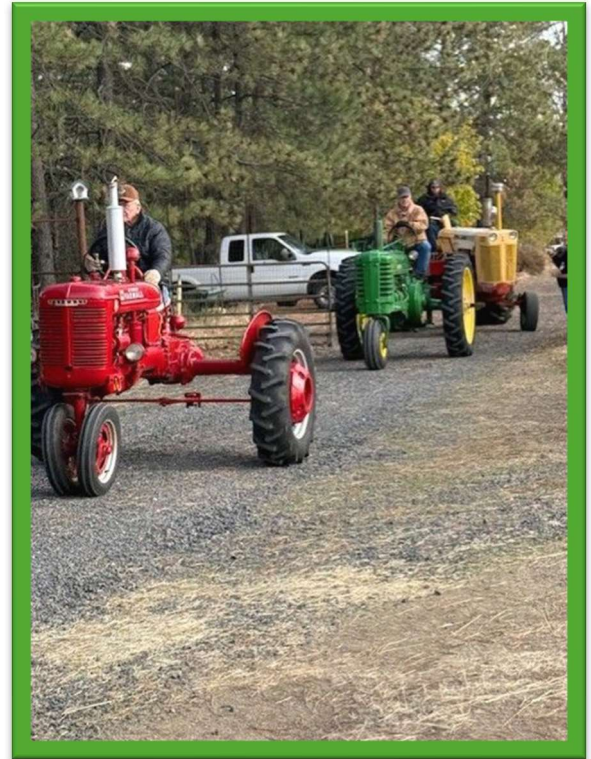
With the addition of **Branch 268**, there are now 39 Branches in the Northwest Region!



**Branch 197** enjoyed a tractor drive last fall. Checkout the photos.... the mobile porta-potty is a great idea! Thanks, Kim, for these photos!



[More from Branch 197 tractor drive!](#)



**Branch 245.** Secretary Dale Fye advises **Branch 245** is celebrating their 50<sup>th</sup> year as a Club. Congratulations to **Branch 245!**

**Branch 264.** Shane Sperry and John Farley want to be sure you mark your calendars for their 2026 Summer Show and Tractor Pull at the Ravalli County Fair Grounds in Hamilton Montana, September 4th & 5th. A good time is promised.



Lindeman Crawler Vintage Find



**Branch 52.** Here's proof that 2 hardy Alaskans participated in a winter parade....



As Spring arrives, we're looking forward to another season of fun with our hobby. And, as always, if there is any way I can assist your Branch, please contact me (talk/text) at 907-229-3500 or email, [farmall1945@alaska.net](mailto:farmall1945@alaska.net).

For now, stay warm, be safe, be happy!

Mike Pollock, Northwest Regional Director

# From Travis Brown, Eastern Regional Director

## Crazy March Weather

Hello all, winter is gone and spring is approaching fast. Maybe. Our weather has gone from 70 and sunny to tornado weather to freezing and snow flurries in a day and in about two more days we will be back to 70. March weather can be crazy!

## Need Eastern Region host for Regional Show

We are still looking for clubs to host the Eastern Regional this year. It's easy, we have done it at some of our shows twice as well as a National Show.

## Getting ready for upcoming Spring Show

I was getting ready for our upcoming spring threshing up at the Tennessee State Ag Museum at Nashville and well things happened.

My semi-truck and trailer have been up in Kentucky moving steam engines, and we will need it to get the thresher to Nashville. Normally our friend John will drive the truck. But he had an incident while cutting trees after the ice storms we had here in Tennessee earlier this year and most likely will not be driving anything stick shift for a while. Good news is he is expected to make a full recovery.

So, I went up there to check over the truck and make sure it was good to go since it had not been started or moved all winter. Then we got to talking and well you can't expect us to bring home an empty trailer, right? So, we ended up with a gravity wagon the local club has wanted to build into a basketball shooting game that the kids should love. Once finished we will move it to local events to promote our show.

Then I needed a way to load the wagon, so we found a nice Super M Farmall nearby that we went and looked at. Something the seller said got me to looking and a few calls later with Director David Scibek who is also an expert in red tractors we determined this was a not so super M. The engine is a 49 M, and the back half appears to be all Super M with the disc brakes etc. Very nice paint and tires which we all know what tires cost on these old tractors, they are worth as much as the tractor in some cases. After some negotiations we ended up with the tractor on our trailer following a large reduction in the asking price. I had been looking for a runner to take on tractor drives and plow days. Somehow, we have a yard full of tractors, and nothing is suitable for these purposes. I don't speak hand crank two cylinder and the 44 M my son got running that my wife's family bought new has tires that are fine if you don't intend to drive far distances or pull a plow. There are a few other tractors with similar issues. I think they might not appreciate me showing up with our newish Kubota to plow with, though we did have some that new in the tractor drive.



This will be a short message this quarter, things are super busy in other areas but not much going on in the antique stuff. I was unable to find a date for a steam school but next year things should be better.

Again, we need a club to host the Eastern Regional show this year. Call or email myself or Jeff!

Thanks,  
Travis Brown, Eastern Region Director

---

## Update from Tina Brown, Secretary/Treasurer/Editor

So glad spring is finally here! It is time to dust off your tractors and get them ready for the upcoming shows. I know my husband and boys especially look forward to upcoming shows.

### Important Member Updates

We are excited to announce the launch of our new [Facebook](#) page, which will serve as an additional resource for members to stay connected and informed. As a reminder, our newsletter is now distributed exclusively by email and is no longer mailed. You can also access it anytime on [EDGETA.com](#). Please help us spread the word by sharing these updates with all your branch members.

### Updating Branch Information

We have had quite a few branches update their officer's information. Thank you so much! This helps me to be able to get in contact with the correct person. If you have not updated your officers, please visit [EDGETA.com](#) and update your officers' and directors' information. Simply click on the blue "Update Officers or Update Directors" tab. If your officer information has not changed from last year, you may enter "same as last year" in place of re-entering all the details, then click "Submit."

### Insurance Changes

Please note that, effective January 1, 2026, we will discontinue support for Directors and Officers (D/O) liability insurance for our members. This change comes because of declining membership, which has made it challenging to continue covering these additional expenses. We apologize for any inconvenience this may cause.

### 2026-2027 Membership Dues

Membership dues for 2026-27 were due on March 15. Payments should be sent to [Tina Brown at 806 Allisona Road, Eagleville, TN 37060](#). To avoid any processing errors, please ensure that your checks and membership forms are properly addressed. Always include your Branch Number in all correspondence, whether by email or check, to help us accurately identify your organization.

### Contact Information

As always, please contact me if you have any questions. My email address is [edgetatmb@yahoo.com](mailto:edgetatmb@yahoo.com). Please send dues to my address: 806 Allisona Road, Eagleville, TN 37060.

**Tina Brown, Secretary, Treasurer, Editor**

## Officers and Contacts

If you have any questions or need assistance, please feel free to reach out to me at [edgetatmb@yahoo.com](mailto:edgetatmb@yahoo.com). For dues payments, kindly send them to my address: 806 Allisona Road, Eagleville, TN 37060. I serve as Secretary, Treasurer, and Editor for the organization.

**President & Director-at-Large, Jeff Fenske** 1331 10th Ave., Kingsburg, CA 93631 (559) 907-9734 [jeff-glyna@att.net](mailto:jeff-glyna@att.net)

**SW Director, Ron Hanson** 32821 Dorama Ave., Acton, CA 93510 (661) 993-2746 [ronhanson21@gmail.com](mailto:ronhanson21@gmail.com)

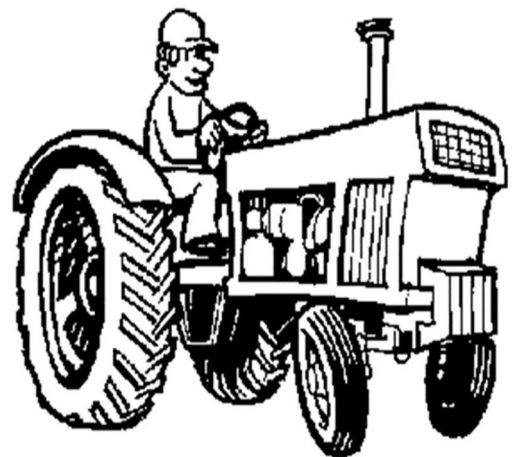
**NW Director, Mike Polluck** 11450 Birch Rd, Anchorage, AK 99516 (907)229-3500 [farmall1945@alaska.net](mailto:farmall1945@alaska.net)

**Central Director, David Scibek**16300 CR 558, Farmersville, TX 75442 (972) 533-6440 [dascibek@gmail.com](mailto:dascibek@gmail.com)

**Eastern Director, Travis Brown** 806 Allisona, Rd., Eagleville, TN 37060(615) 556-2344 [tbkeck@yahoo.com](mailto:tbkeck@yahoo.com)

**Sec./Treas./Editor, Tina Brown** 806 Allisona Rd., Eagleville, TN 37060 (615) 556-2332 [edgetatmb@yahoo.com](mailto:edgetatmb@yahoo.com)

**Webmaster, Josh Dilsaver** (417) 379-2460 [Josh@joshdilsaver.com](mailto:Josh@joshdilsaver.com)



**Visit our website!**  
**[www.EDGETA.ORG](http://www.EDGETA.ORG)**

**“Practice Safety First”**