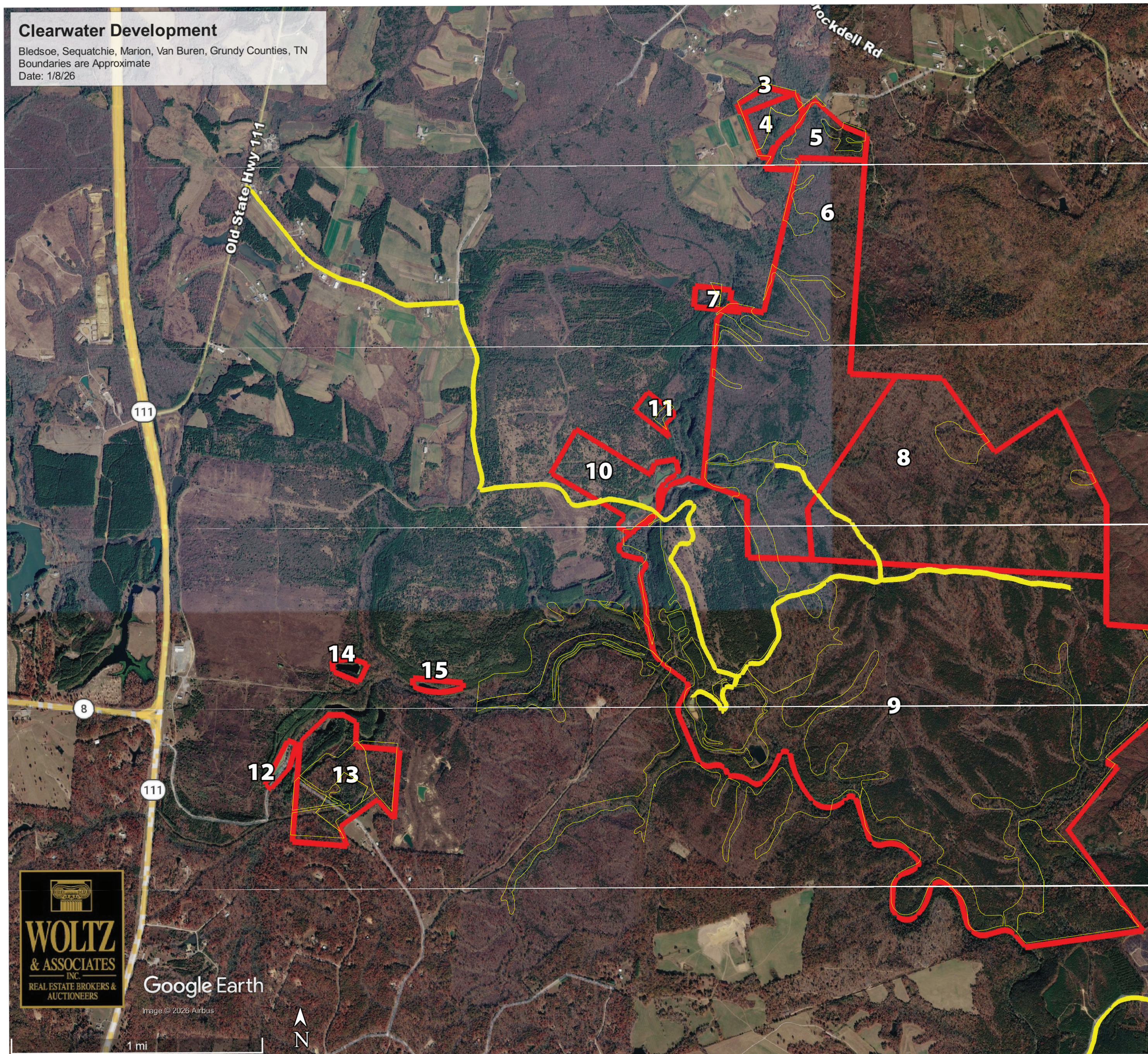


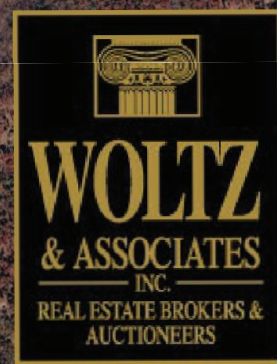
Clearwater Development

Bledsoe, Sequatchie, Marion, Van Buren, Grundy Counties, TN
 Boundaries are Approximate
 Date: 1/8/26



Auction Tract	Parcel ID	Acreage	County	Description
3	086 003.00	6.19	Van Buren, TN	Carbon Credits – Income Producing - Gently Rolling/Wooded Tract
4	002 001.00	20.5	Sequatchie, TN	Carbon Credits – Income Producing. Wooded/Gently Rolling Tract
5	077 016.00	36	Bledsoe, TN	Carbon Credits – Income Producing. Wooded/Gently Rolling Tract
6	085 002.01	425	Bledsoe, TN	Carbon Credits – Income Producing. Wooded/Gently Rolling to Level Topography – Good Interior Road system – Small stream runs through the property.
7	002 001.10	8.25	Sequatchie, TN	Carbon Credits – Income Producing Adjoins the 426.41 Ac Tract – Wooded/Gently rolling Tract
8	085 002.01	420	Bledsoe, TN	Carbon Credits – Income Producing. Mostly gentle/rolling topography, Pine Knob (2103FT) stream runs through it
9	085 002.00	1,437	Bledsoe, TN	Carbon Credits – Income Producing. Large wooded tract, gentle/rolling topography, multiple streams and roads throughout.
10	004 001.10	59.7	Sequatchie, TN	Open and wooded rolling to level topography.

Auction Tract	Parcel ID	Acreage	County	Description
11	003 001.20	8	Sequatchie, TN	Gentle/Rolling Topography with a pond
12	010 001.03	5.71	Sequatchie, TN	Sells ABSOLUTE. Sediment ponds located off of Gladly Fork Mine Road.
13	010 002.00	93.7	Sequatchie, TN	Sells ABSOLUTE. Mostly wooded tract. Gently rolling/Level topography. Pockets of standing mature pine and good interior roads.
14	004 001.01	5.39	Sequatchie, TN	Sells ABSOLUTE. Large Pond – Ideal for a cabin or home site.
15	010 001.01	5	Sequatchie, TN	Large Pond – Sells ABSOLUTE.



Google Earth

Image © 2026 Airbus



1 mi