



OCEAN TERRACE
RESIDENCES

RAMSA (ROBERT A.M. STERN ARCHITECTS)
INTERIOR DESIGN ARCHITECT

WITKOFF
DEVELOPER

OCEAN TERRACE HOLDINGS
DEVELOPMENT PARTNER

REVUELTA ARCHITECTURE INTERNATIONAL
EXTERIOR ARCHITECT

ENEA LANDSCAPE ARCHITECTURE
LANDSCAPE ARCHITECT, OCEAN TERRACE

RAYMOND JUNGLES, INC.
LANDSCAPE ARCHITECT, OCEAN TERRACE PARK

A WORLD OF
VISIONARY DESIGN,
WHERE EVERY HOME
HAS CINEMATIC
OCEAN VISTAS.



CONTENTS

INTRODUCTION
10

RESIDENCES
12

LIFESTYLE
50

NEIGHBORHOOD
102

VISIONARIES
142

INTRODUCTION

Emerging from five verdant acres of tropical parkland, Ocean Terrace Residences span two sculptural glass towers facing 350 feet of ocean frontage. This rare orientation grants every one of the 52 boutique residences and 24 resort residences cinematic views of the Atlantic, lush parkland, wild dunes, and bay scenery.

From park to penthouse, every inch of this world-class property has been painstakingly considered by iconic developer Witkoff in close partnership with Ocean Terrace Holdings. Classically inspired interiors by RAMSA (Robert A.M. Stern Architects) flow out to modernist exteriors by Revuelta Architecture International, while cultivated gardens by Enzo Enea shade the grounds, and a sprawling new park by Raymond Jungles forms a botanical gateway to the ocean. Just upcoast, a mile of uninterrupted parkland frames enchanting views of the city and beyond.

Home to a boutique hotel, private club, and thoughtfully planned retail, Ocean Terrace invites residents to occupy an exclusive world that perfectly balances discretion and connection.



RESIDENCES





RESIDENCES

DESIGNED BY RAMSA TO EMBRACE THE
SPECTACULAR SHORELINE VISTAS AND EMBODY
ELEGANT OCEANFRONT LIVING.



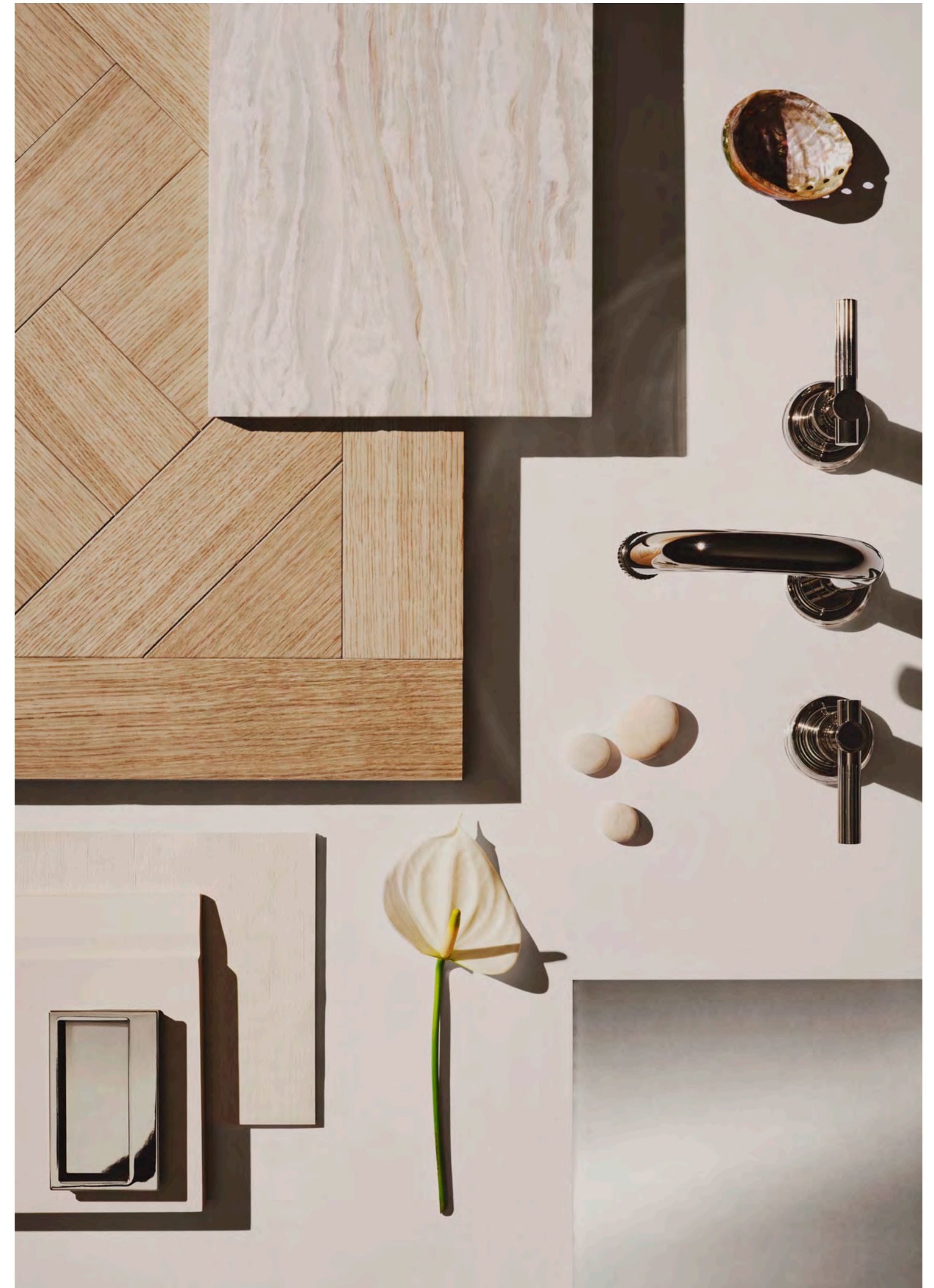


BOUTIQUE RESIDENCES

RAMSA has brilliantly designed the residential interiors to highlight dazzling ocean, bay, and park views. Known for its masterful layouts and expert sense of scale, the firm has conceived flowing indoor-outdoor living spaces with gracious proportions and abundant natural light. Art Deco details, clean lines, and exquisite materials impart a sophisticated ambiance, while curved forms gesture to the coastline.

Occupying their own 20-story tower, the 52 boutique residences are defined by classical details like Parquet de Versailles flooring and a serene palette of oak and white stone. Each residence enjoys private outdoor space and a private elevator landing, creating secluded sanctuaries that embody elegant oceanfront living.

RIGHT Parquet de Versailles flooring and a serene palette of oak and white stone appoint the powder rooms.





DESIGN

Sophisticated and inviting, the residences feature a luminous palette that evokes the shoreline. Dramatic floor-to-ceiling windows bathe the indoor-outdoor living spaces in natural light, and uninterrupted ocean vistas sweep across dunes and parkland, often encompassing sunrise to sunset views.

POWDER ROOMS

Fluted white stone vanities and custom nickel sconces lend a timeless European sensibility to the impressive powder rooms, whose marble portals frame floor-to-ceiling mirrors with inset bevels.





“WE CRAFTED THE RESIDENCES OF OCEAN TERRACE WITH THE ORDER OF CLASSICISM, OVERLAID WITH THE CASUAL FREEDOM OF RESORT BEACHFRONT LIVING.”

PAUL WHALEN
PARTNER AT RAMSA



TERRACES

Generous terraces give each home private outdoor space and a spectacular prospect over the coast. Designed to optimize views, their organic shape follows the flowing curves of the building, while glass balustrades promise uninterrupted sightlines. These tranquil escapes seem to float above the ocean, offering a dazzling place to entertain or spend a languorous afternoon.

KITCHENS

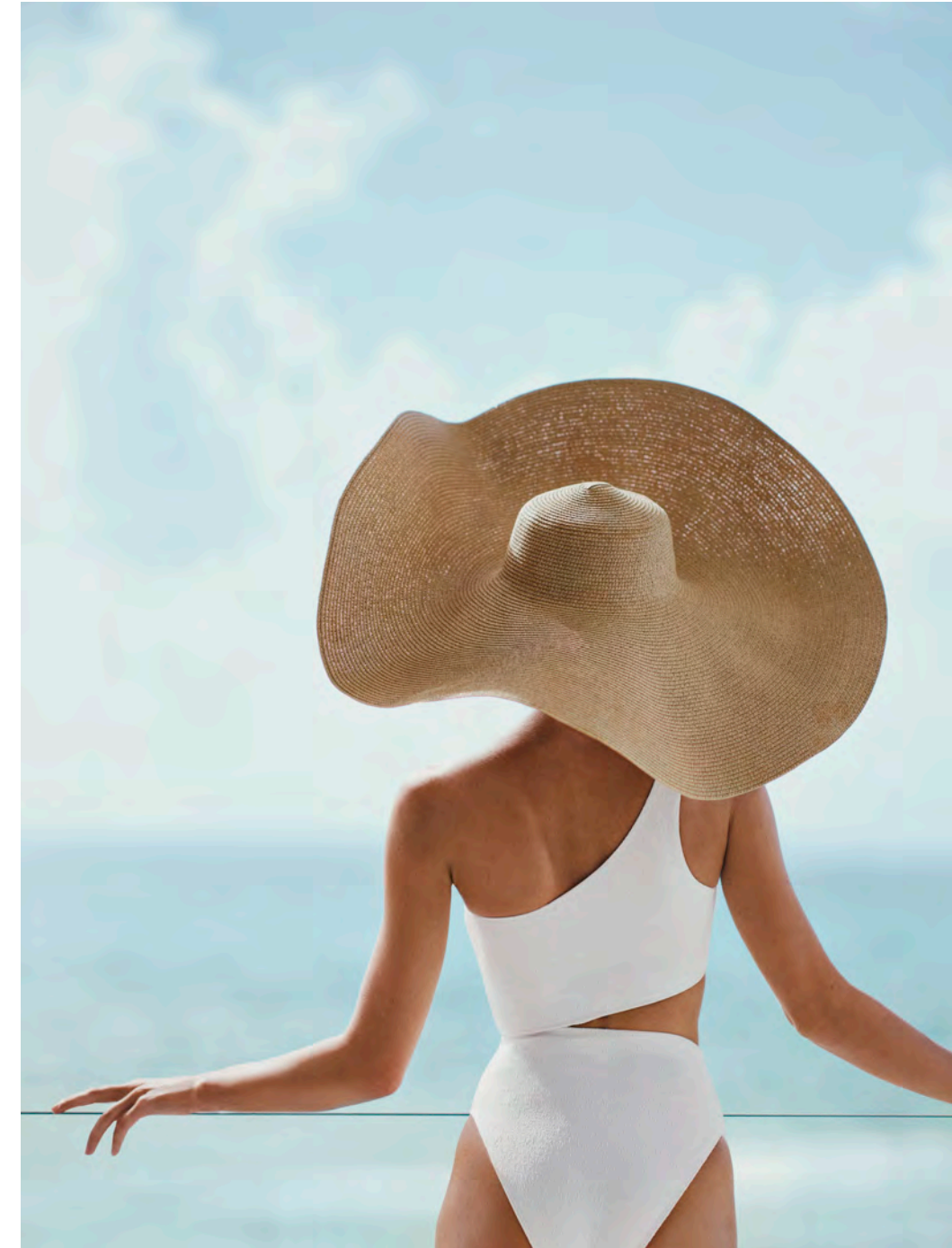
The gourmet kitchens resemble finely crafted furniture, centering around a white marble island whose curved wood panels allude to the building's graceful exterior. Ribbed glass and nickel details elevate the custom RAMSA white-oak cabinetry; select residences also include walk-in butler's pantries.



LEFT Kitchens marry Art Deco and classical design with ribbed-glass cabinets, white marble countertops, and Parquet de Versailles flooring.

“THE TOWERS’ FLOWING
FORMS FOLLOW THE ORGANIC
CONTOURS OF THE COASTLINE,
RECALLING THE RHYTHMIC
MOVEMENT OF WAVES.
THROUGHOUT THE DAY,
THE SUN ACTIVATES
THE FAÇADE’S CURVILINEAR
GEOMETRY, PRODUCING
A DYNAMIC PLAY OF LIGHT,
SHADOW, AND REFLECTION.”

LUIS REVUELTA
PRINCIPAL AT REVUELTA ARCHITECTURE INTERNATIONAL



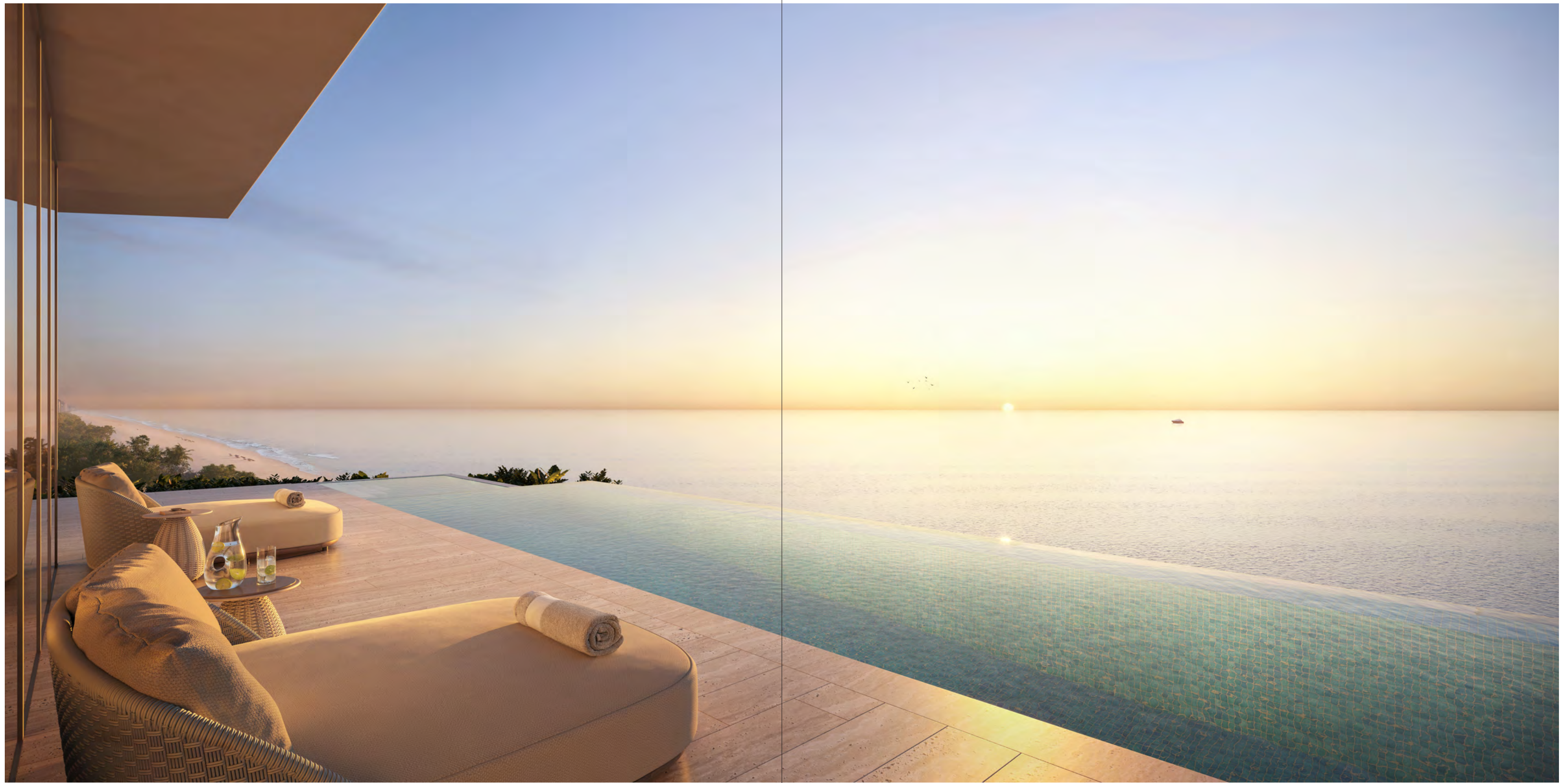


PRIMARY BATHROOMS

Exquisite primary bathrooms appear to have been carved from a single piece of stone, with honed and vein-cut walls, radial starburst floor details, and integrated niches. Ribbed-glass shower and water-closet enclosures, freestanding tubs, and custom double vanities complete these sculptural sanctuaries.



LEFT The palette of honed natural stone, walnut, ribbed glass, and vintage brass defines the artful primary bathrooms.



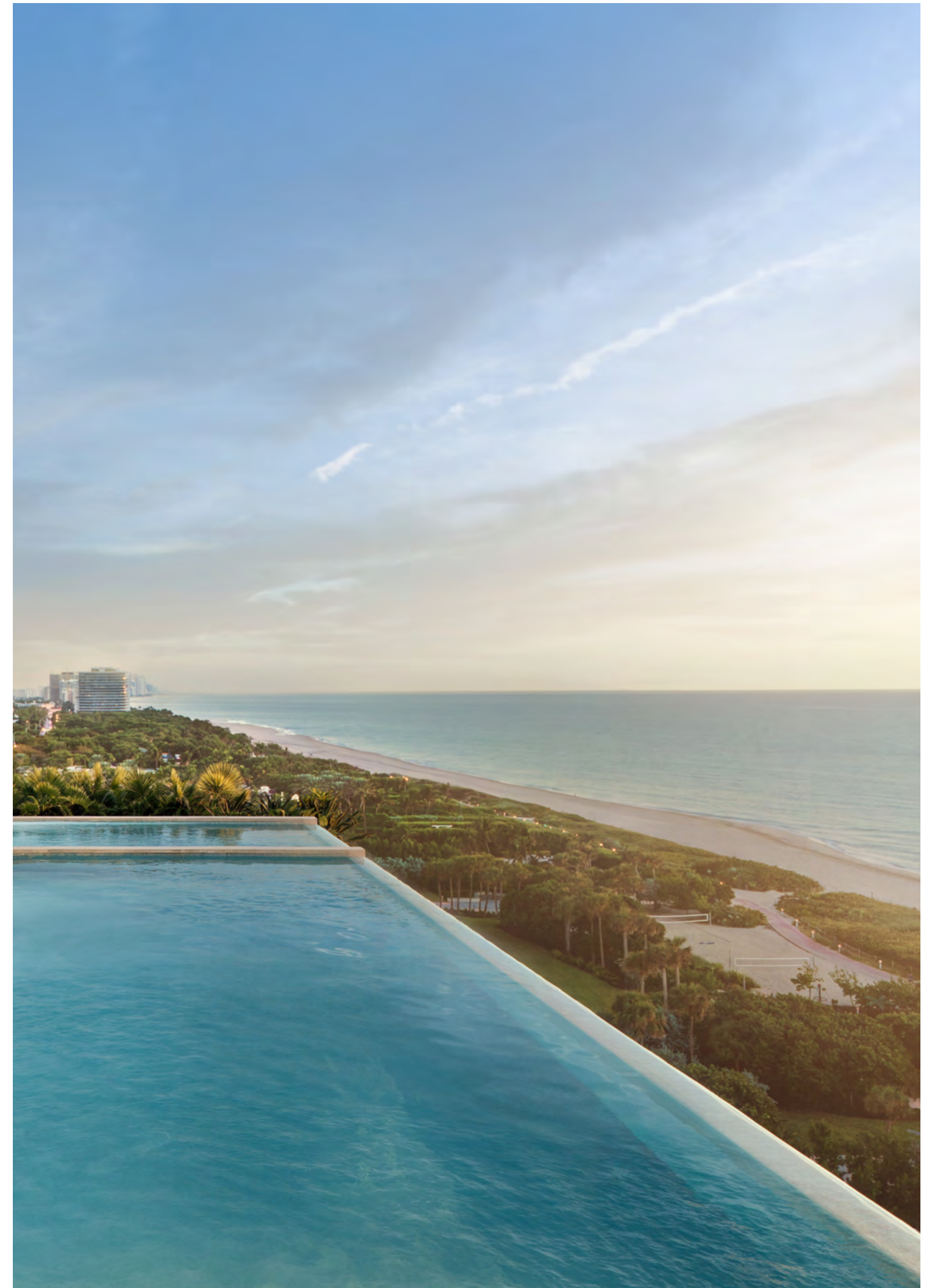
PENTHOUSES

Two exceptional five-bedroom duplex penthouses extend to their own private rooftops, each with a lap pool, hydrotherapy spa, lounge, open-air kitchen, and outdoor dining area. Breathtaking views of the Atlantic Ocean, Biscayne Bay, and lush shoreline surround these incomparable aeries.



RESORT RESIDENCES

The exclusive resort residences stylishly reflect their oceanfront setting. Inspired by the sea and sand, RAMSA has meticulously crafted an airy palette that pays tribute to the stunning Atlantic vistas, while classical touches instill a sense of timeless elegance throughout. Each home comes fully appointed with RAMSA-selected custom furnishings, an artful curation of traditional details, modern forms, and subtle nautical references.





TERRACES

Terraces unfurl along the building's sculpted curves, flowing naturally into each residence through floor-to-ceiling sliding glass doors. Framing sublime ocean views, these private outdoor spaces and their adjoining interiors contain custom RAMSA-selected furnishings that invite lounging and entertaining.



“OUR RESIDENTIAL INTERIORS
TAKE FULL ADVANTAGE
OF THE LOCATION’S OPEN
VIEWS AND PRIVACY.
SLIDING GLASS DOORS
BETWEEN THE GREAT ROOM
AND TERRACE CREATE
A CONTINUOUS INDOOR-
OUTDOOR EXPERIENCE.”

MICHAEL JONES
PARTNER AT RAMSA



KITCHENS

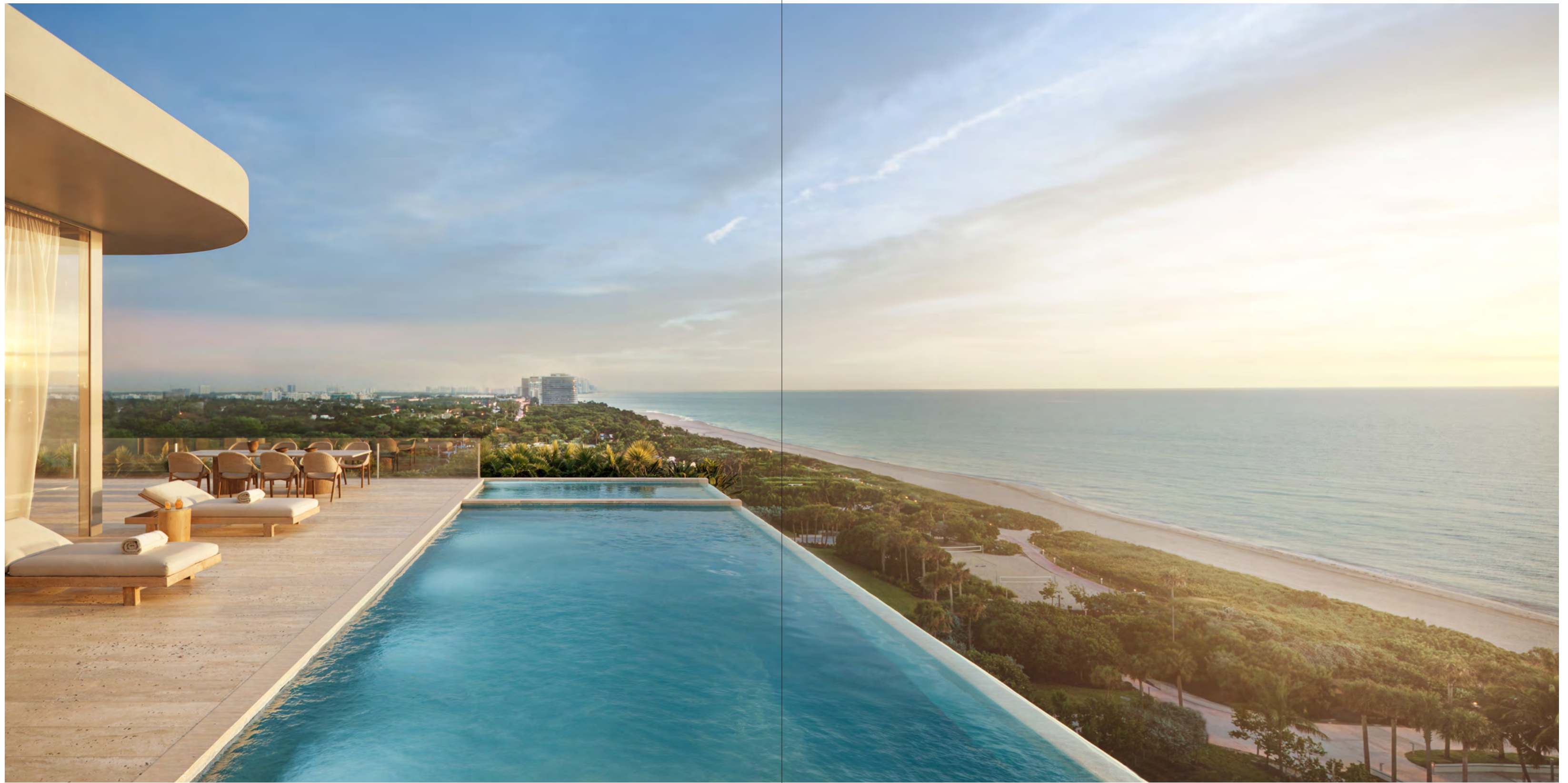
Custom designed by RAMSA, the warm kitchens reflect the firm's refined sensibility and meticulous attention to detail, with oak millwork, fluted glass cabinets, and marble backsplashes.



BATHROOMS

Luxurious soaking tubs and rich wood vanities distinguish the travertine-clad primary bathrooms. In powder rooms, the natural stone walls recall rippling lines in the sand.

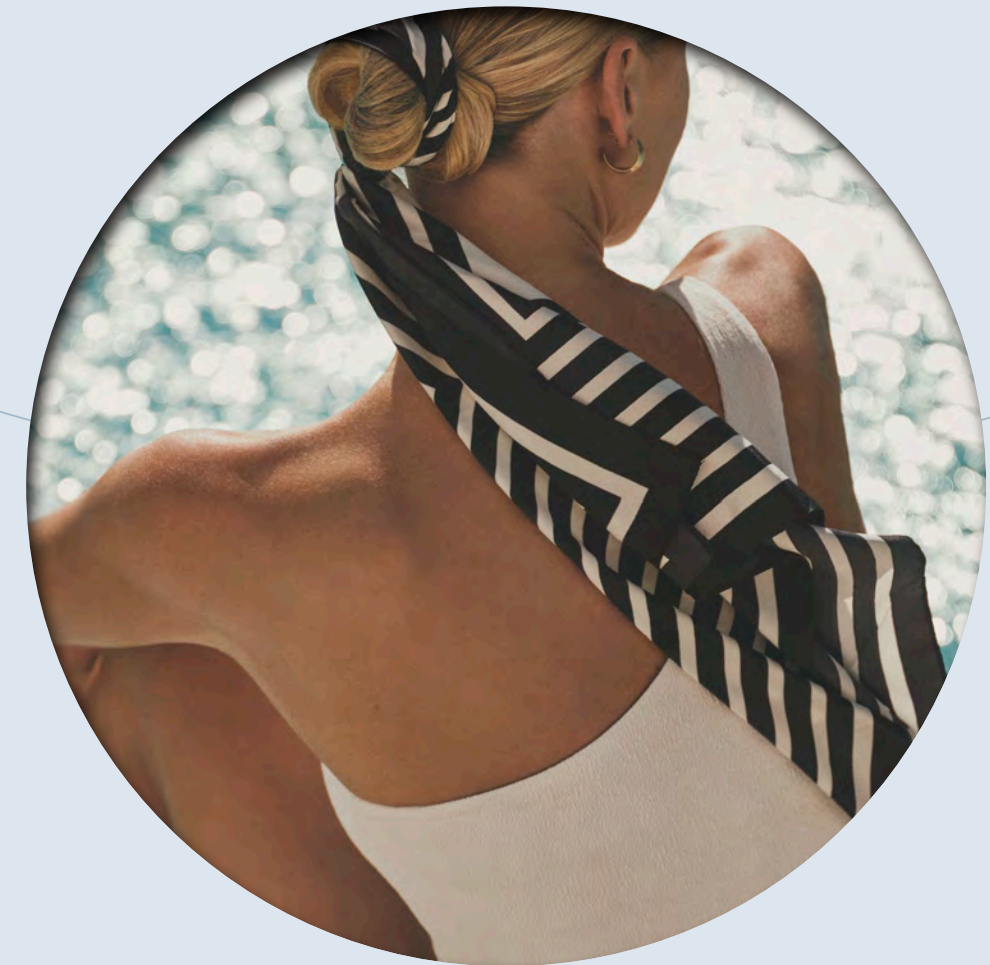




RESORT RESIDENCE PENTHOUSES

Two majestic duplex penthouses lead to their own private rooftops to reveal sweeping ocean views, lap pools, hydrotherapy spas, and wraparound decks. These resort-like escapes promise unparalleled outdoor connection, with lounges, kitchens, and dining areas replete with custom furnishings.

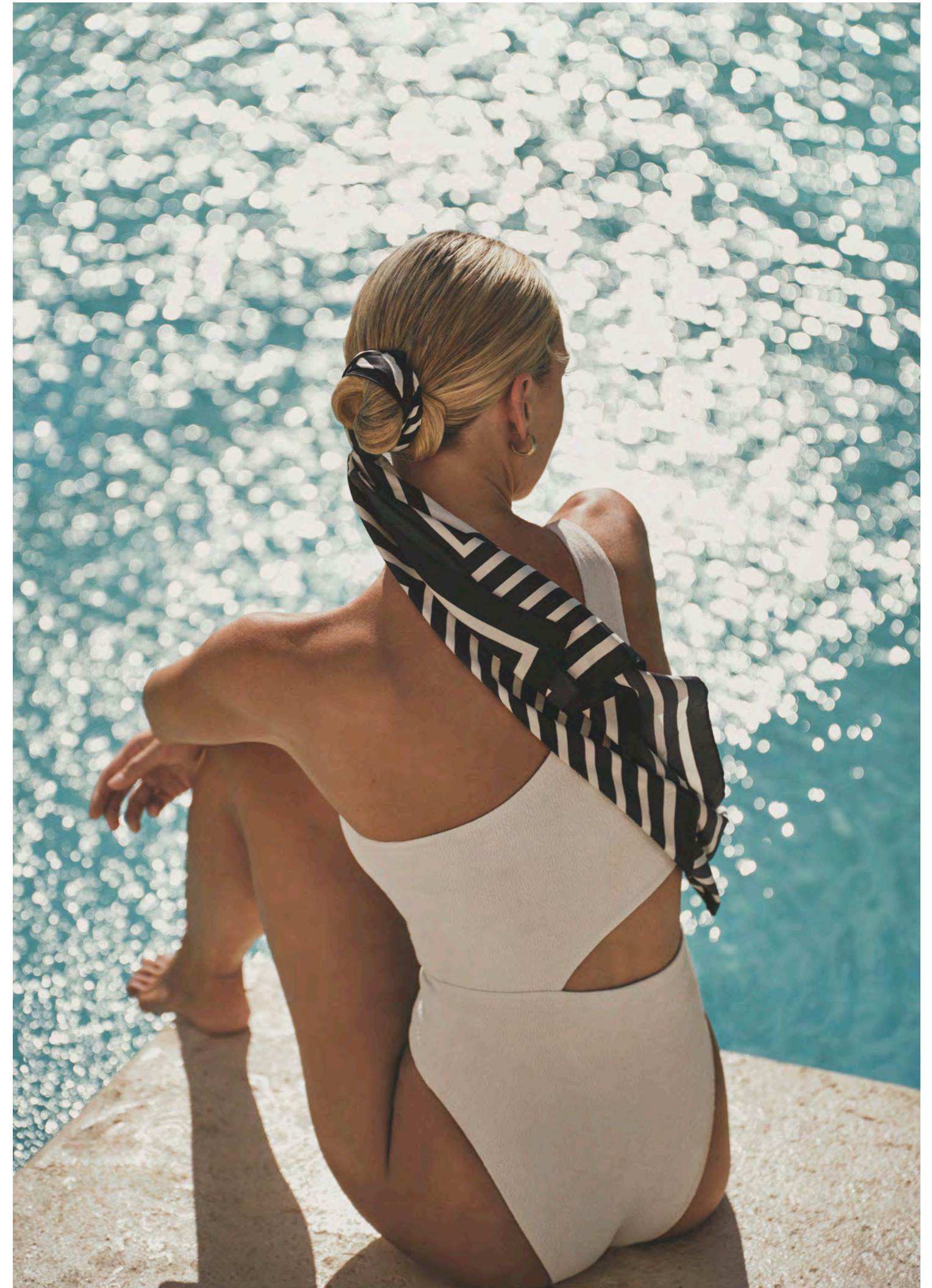
LIFESTYLE





LIFESTYLE

RESORT-STYLE AMENITIES, WORLD-CLASS SERVICE, A BOUTIQUE HOTEL, PRIVATE MEMBERS' CLUB, AND RENOWNED RETAIL CREATE AN UNPRECEDENTED RESIDENTIAL EXPERIENCE.





PORTE-COCHÈRE

A grand arrival unfolds through a lushly landscaped porte-cochère, with a cobblestone drive and soaring triple-height motor court.



“FROM THE MOMENT YOU ARRIVE, THE PRIVATE GARDENS WELCOME YOU WITH LAYERS OF LUSH TROPICAL PLANTS. EACH SPACE IS THOUGHTFULLY DESIGNED TO FEEL CALM AND QUIET, LIKE A GENTLE RETREAT. THE GARDENS ARE ARRANGED LIKE ROOMS IN A HOME, EACH WITH ITS OWN CHARACTER AND MICROCLIMATE, INVITING YOU TO SLOW DOWN AND IMMERSE IN NATURE.”

ENZO ENEA
PRINCIPAL AT ENEA LANDSCAPE ARCHITECTURE



LOBBY

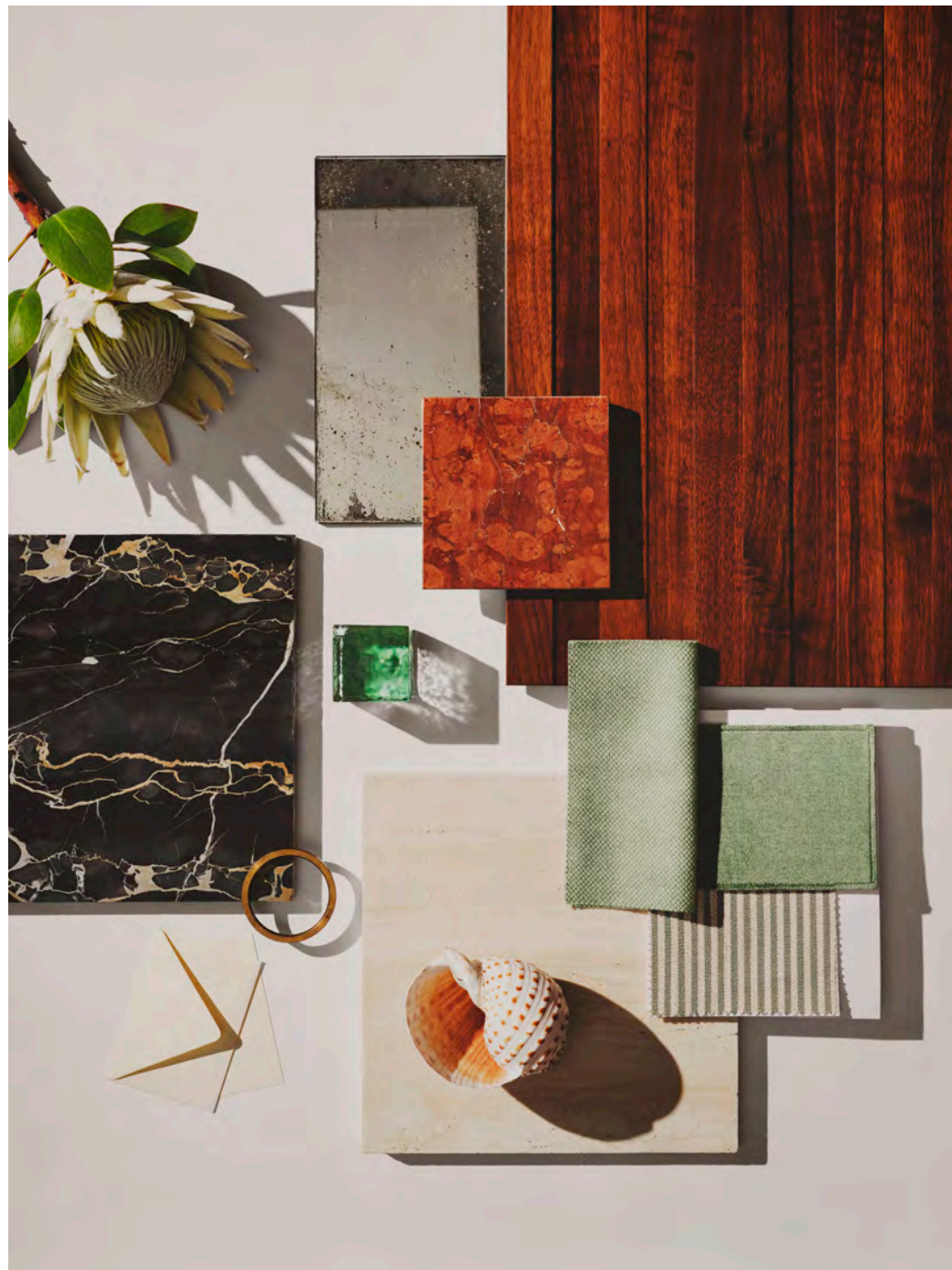
Art Deco classicism and Brazilian Modern design inform the striking wood-paneled lobby. Its 14-foot coffered ceiling and RAMSA's sculptural Portoro marble desk create a polished entry that frames views of the tranquil morning garden.



LIBRARY

Off the lobby, a curvilinear library with warm wood paneling, floor-to-ceiling bookshelves lined in rattan, and atelier-crafted furnishings channels midcentury glamour.





“AN AMENITIES PALETTE
OF RICH WOODS, TEXTURED
RATTAN, AND SANDY
TRAVERTINE HARMONIZE
WITH THE TROPICAL
PRIVATE GARDENS.”

PAUL WHALEN
PARTNER AT RAMSA

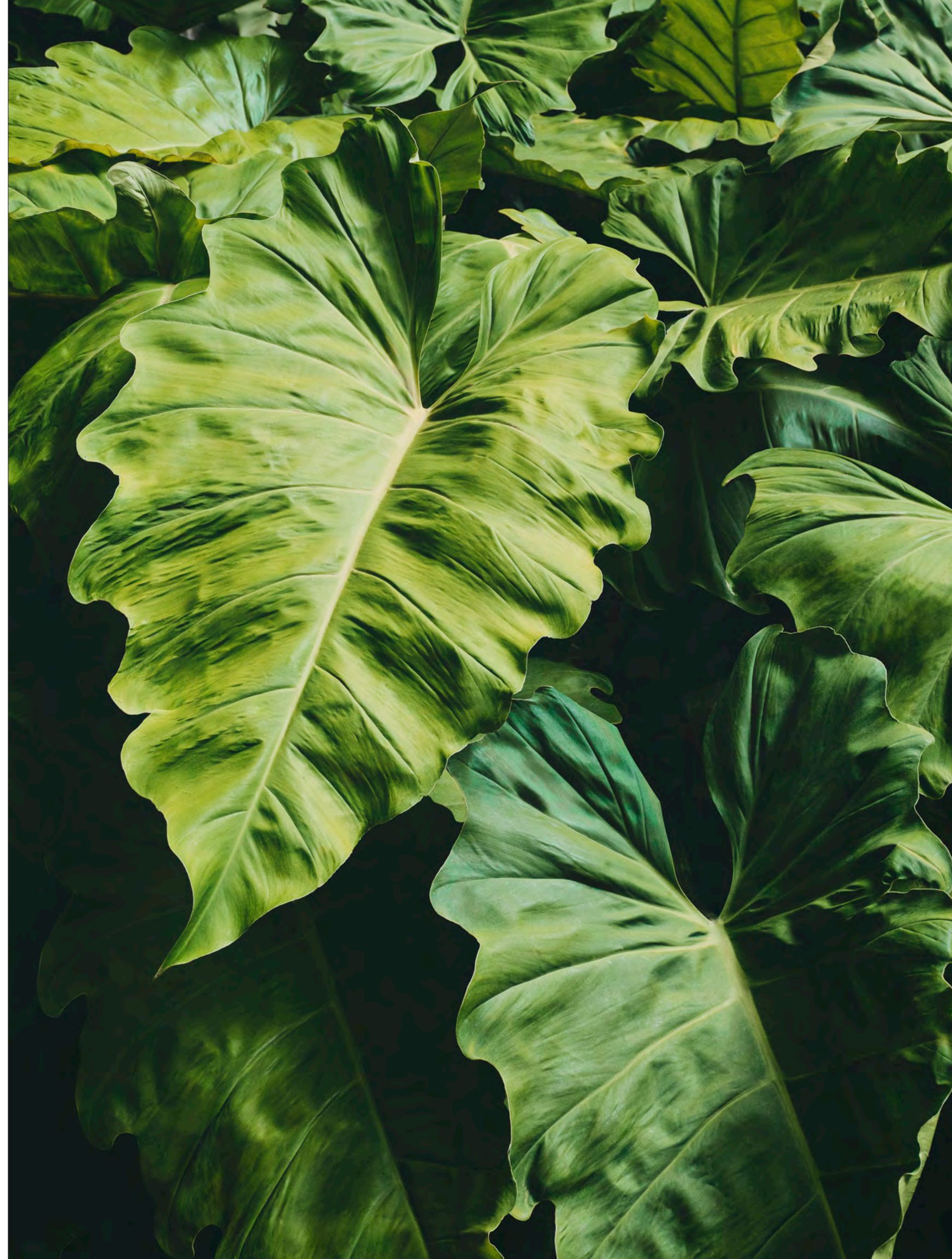


TEA ROOM

Bathed in sunlight, the chic tea room is an inviting nook for a light bite or afternoon break. It evokes the understated elegance of a fine hotel with travertine floors, a custom mirrored breakfront, and broad windows looking onto the garden.

MORNING GARDEN

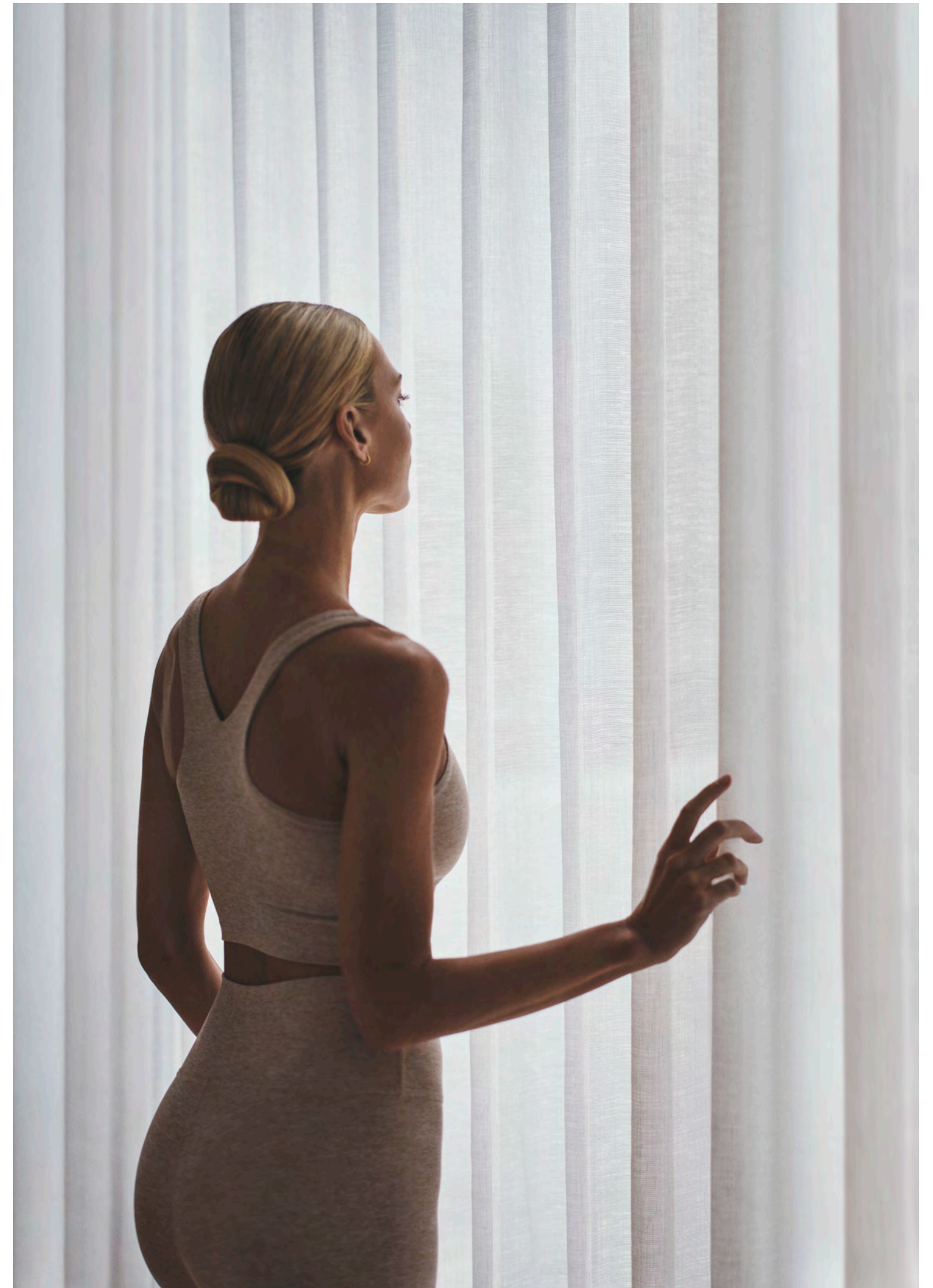
Designed by Enzo Enea, the lush morning garden resembles a private tropical conservatory, with cooling water features and layers of Montgomery palms, native coffee plants, and Burle-Marx philodendrons.





FITNESS CENTER

Floor-to-ceiling windows frame ocean and garden views in the bright indoor-outdoor fitness center, a rejuvenating space with high-design equipment and a serene movement studio. A shaded fitness terrace overlooking the ocean hosts outdoor equipment, a yoga lawn, and a juice bar.



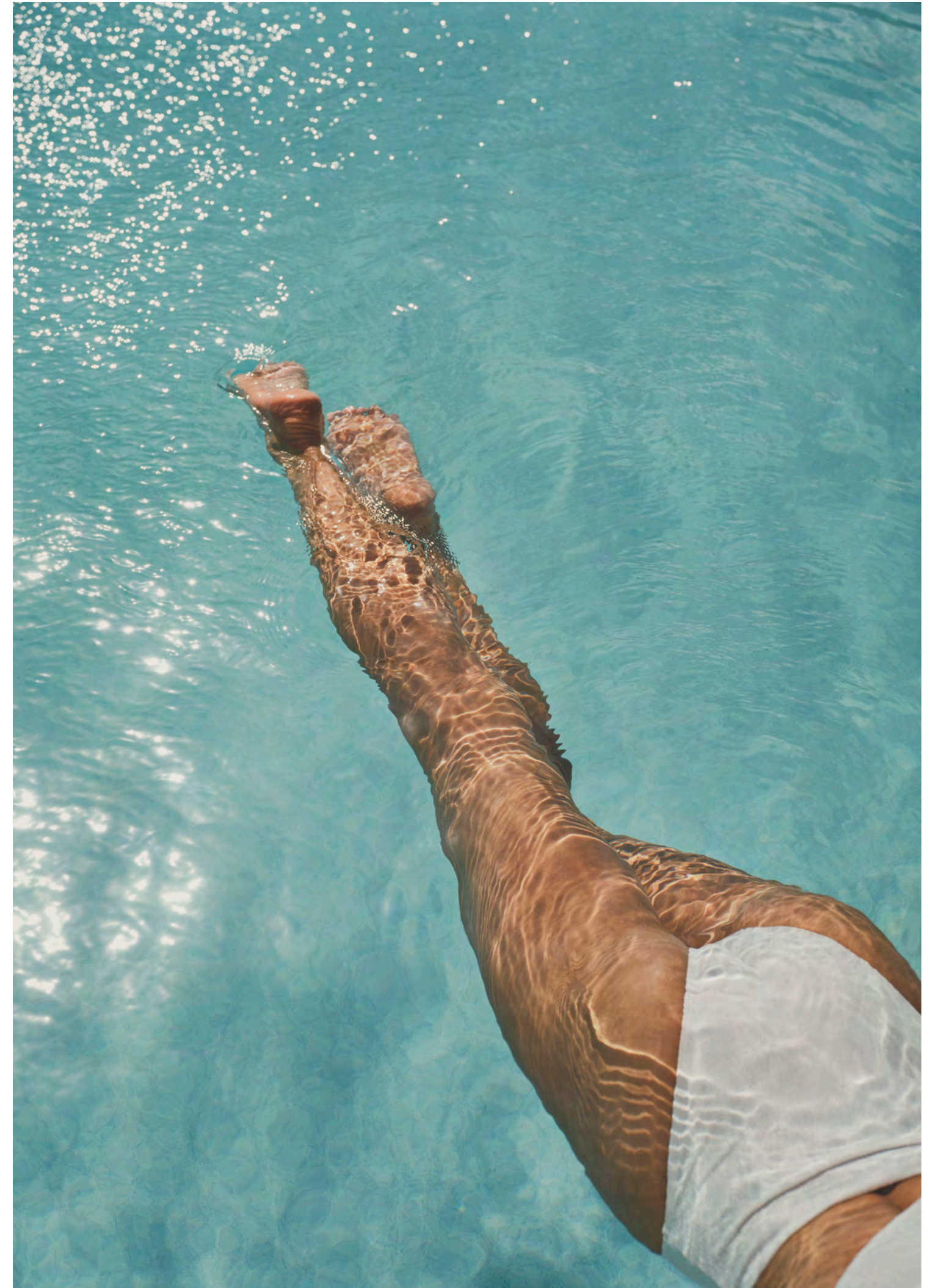
“EVERY DETAIL AND MATERIAL
WAS HAND-SELECTED TO
CREATE AN ATMOSPHERE
OF REFINED WELLNESS.”

FRANCES CALOSSO
DIRECTOR OF INTERIOR DESIGN AT RAMSA



THE OCEAN TERRACE

On the fifth floor, the magnificent Ocean Terrace encompasses a dynamic landscape of ocean-view pools, lushly layered gardens, and world-class food and beverage service. Residents have exclusive access to the podium's secluded southeast corner, a peaceful haven lined with palms and flowering plants that receives sunlight throughout the day.







SUNRISE RESTAURANT

Poised atop The Ocean Terrace, the hotel's indoor-outdoor restaurant enjoys dramatic ocean and park vistas. Enveloped in Enzo Enea's lush landscaping, it's a sublime setting for a morning coffee or golden-hour cocktail. In the park below, the elevated oceanfront café pavilion, designed by Raymond Jungles, nestles within dune plantings and wraps around a native Seagrape tree while offering views of the water.

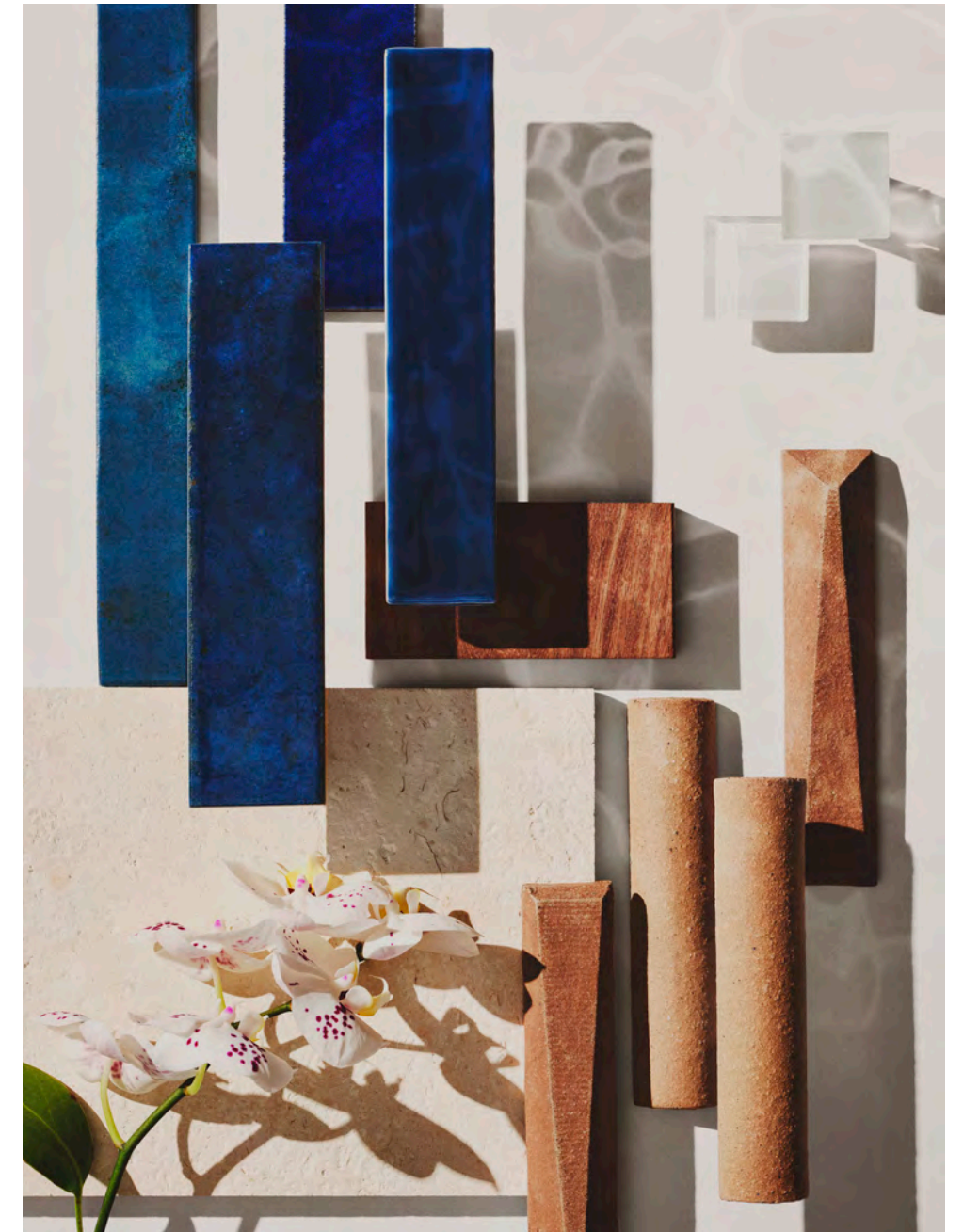


THE OCEAN TERRACE

A 75-foot lap pool appears to flow into the infinite blue horizon, while a therapy pool, chaise lounges, garden cabanas, and shaded hammock coves invite moments of pure leisure. Residents may practice yoga on the sunrise lawn, unwind at the private poolside bar, and gather around the large summer kitchen, while always taking in sweeping ocean vistas.

“THE DESIGN OF THE HOSPITALITY SPACES DRAWS INSPIRATION FROM LUXURIOUS OCEAN LINERS AND ART DECO STYLE, BLENDING GRANDEUR WITH INTIMACY TO CREATE A MEMORABLE EXPERIENCE.”

MICHAEL JONES
PARTNER AT RAMSA

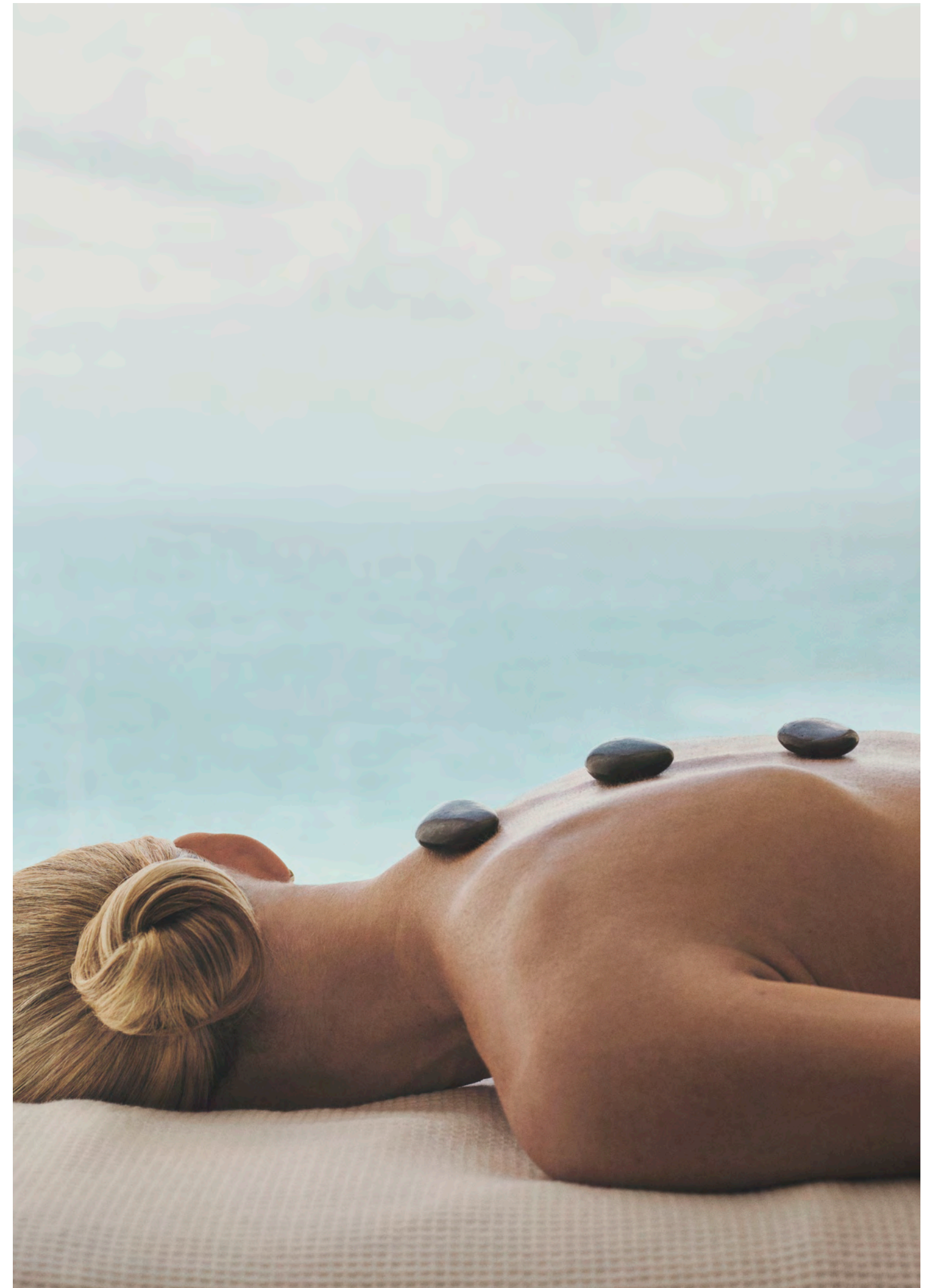




SERVICES

Ocean Terrace's highly attentive service anticipates residents' every need. A dedicated residential concierge awaits to coordinate private travel or dinner reservations, and wellness specialists craft personalized fitness and health consultations. In-home catering, sommeliers, and spa treatments create luxurious experiences for each resident.

RIGHT Residents may enjoy in-home spa treatments.





“OCEAN TERRACE PIONEERS
A TRANSFORMATIVE WAY OF
LIVING. ITS SOPHISTICATED BLEND
OF DESIGN, CULTURE, LEISURE,
AND NATURAL BEAUTY SURPASSES
WHAT MANY CONSIDER POSSIBLE
IN AN URBAN SETTING.”

ALEX WITKOFF
CEO OF WITKOFF



HOTEL

The 42-key boutique hotel brings unmatched style to North Beach. With the oceanfront elegance of the finest European hotels, this exclusive destination occupies a historic Art Deco gem, with interiors designed by RAMSA that eloquently evoke its heritage. Beautifully detailed spaces include the glamorous restaurant and bar, which recall the warm interiors of classic yachts.

RIGHT The hotel's richly crafted interiors and tailored service introduce five-star hospitality to North Beach.





CLUB

The private members' club is a cultivated modern retreat offering exclusive programming, exceptional cuisine, and highly personalized service. Within an impressive Art Deco building, RAMSA has fashioned polished interiors that create a rarified yet lively sanctuary for this selective community. Members may meet in the restaurant, lounge, and rooftop bar, or unwind in the large tranquil spa, which includes sauna and steam rooms, treatment rooms, and a relaxed energy space.



RIGHT Members may dine on the club's oceanfront terrace.







NEIGHBORHOOD



NEIGHBORHOOD

THE STORIED ENCLAVE OF NORTH BEACH OFFERS AN ALLURING MIX OF IDYLIC VISTAS, TREE-LINED STREETS, AND CHIC WATERFRONT CHARM.





NEIGHBORHOOD

The storied enclave of North Beach offers an alluring mix of idyllic vistas, tree-lined streets, and chic waterfront charm. Ocean Terrace introduces peerless hospitality and retail to this enchanting retreat, while the new Ocean Terrace Park adjoins Altos del Mar and North Beach Oceanside Parks along the verdant coastline.

With 350 feet of prime Atlantic frontage, Ocean Terrace balances pristine natural beauty with proximity to Bal Harbour, Indian Creek, Surfside, and world-class boating, golf, and racquet sports. Residents may easily take advantage of the renowned entertainment, shopping, dining, and nightlife that make greater Miami a global destination.





NORTH BEACH

With wide beaches and Michelin-starred dining, the neighborhood exudes a serene, sophisticated atmosphere that stands apart from nearby South Beach.





MIAMI

RESTAURANTS

01. Makoto
02. The Palm
03. The Surf Club Restaurant
04. Marc's Artisanal Pizzeria
05. Sunny's Steakhouse
06. Mandolin Aegean Bistro
07. Cecconi's
08. L'Atelier de Joël Robuchon
09. ZZ's Club
10. Nami Nori
11. COTE Miami
12. Mother Wolf
13. Faena
 - Los Fuegos by Francis Mallmann
 - The Living Room
14. Lucali
15. The Ocean Grill
16. Casa Tua Miami Beach
17. MILA
18. The Joyce
19. Estiatorio Milos
20. Carbone Miami
21. Joe's Stone Crab

CULTURE

13. Faena Theater
22. Miami City Ballet
23. The Bass Museum
24. Art Basel Miami Beach
25. New World Center
26. Adrienne Arsht Center
27. Pérez Art Museum Miami
28. Phillip and Patricia Frost Museum of Science

SHOPPING

29. Bal Harbour Shops
30. Miami Design District
31. Lincoln Road
32. Brickell City Centre

HOSPITALITY

33. The Shore Club
34. The St. Regis Bal Harbour Resort
01. Four Seasons Hotel at The Surf Club
35. Casa Cipriani *Coming Soon*
36. Aman *Coming Soon*
13. Faena
37. Bvlgari *Coming Soon*
15. The Setai
38. The Shelborne By Proper
39. Rosewood The Raleigh

RECREATION

40. Ocean Terrace Park
41. Indian Creek Country Club
42. North Beach Oceanside Park
43. North Shore Park Beach
44. Miami Beach Aquatic Center and Park *Coming Soon*
45. Miami Beach Bandshell
46. Miami Beach Tennis Center
47. La Gorce Country Club
48. Miami Beach Boardwalk
49. Miami Beach Golf Club
50. Miami Beach Botanical Garden
51. Sunset Harbour Yacht Club
52. Soundscape Park
53. Miami Beach Marina
54. South Pointe Park

AIRPORTS

- Miami International Airport | 25 MIN DRIVE
- Miami-Opa Locka Executive Airport | 25 MIN DRIVE
- Ft. Lauderdale Executive Airport | 35-50 MIN DRIVE





LEFT The Bass Museum

RIGHT The Miami Beach Convention Center,
home to Art Basel each December

CULTURE

Miami is a global hub for art, design, and creativity.

The Adrienne Arsht Center and New World Center present world-class performances, while the Faena Forum hosts original productions. Miami Beach's Bass Museum and the ICA in the Design District showcase cutting-edge contemporary art, and the waterfront Pérez Art Museum exhibits striking modern and international works. Every December, Art Basel Miami Beach draws collectors and curators from around the world.





LEFT Pérez Art Museum Miami

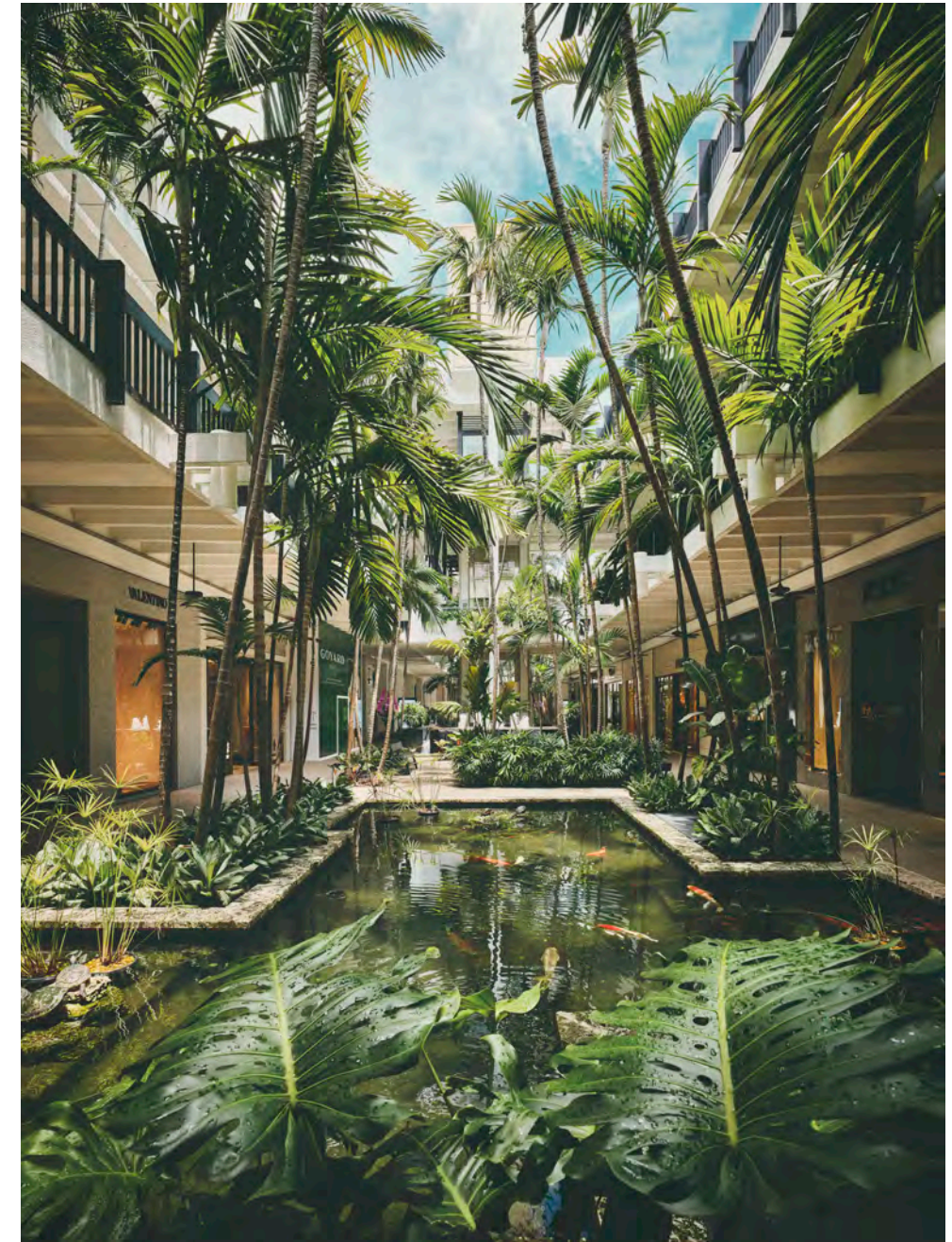
RIGHT Adrienne Arsht Center

NEXT PAGE New World Center



SHOPPING

A premier destination for high-end retail, Miami offers diverse shopping experiences. Tropical gardens line the open-air Bal Harbour Shops, an iconic collection of designer boutiques, and the large Aventura Mall features luxury brands and museum-quality art. The lively Miami Design District is home to couture fashion houses, design showrooms, and immersive art installations.





LEFT Dior, Miami Design District
TOP RIGHT Hermès, Miami Design District
BOTTOM RIGHT *Fly's Eye Dome*,
Miami Design District

RESTAURANTS

Miami's cosmopolitan dining scene attracts innovative, heralded chefs from around the world. Shaped by the city's coastal setting and international energy, restaurants highlight fresh ingredients, bold flavors, and warm hospitality. Menus range from legendary seafood at Joe's Stone Crab to bright Greek cuisine at Mandolin Aegean Bistro and Korean barbecue at Michelin-starred COTE.



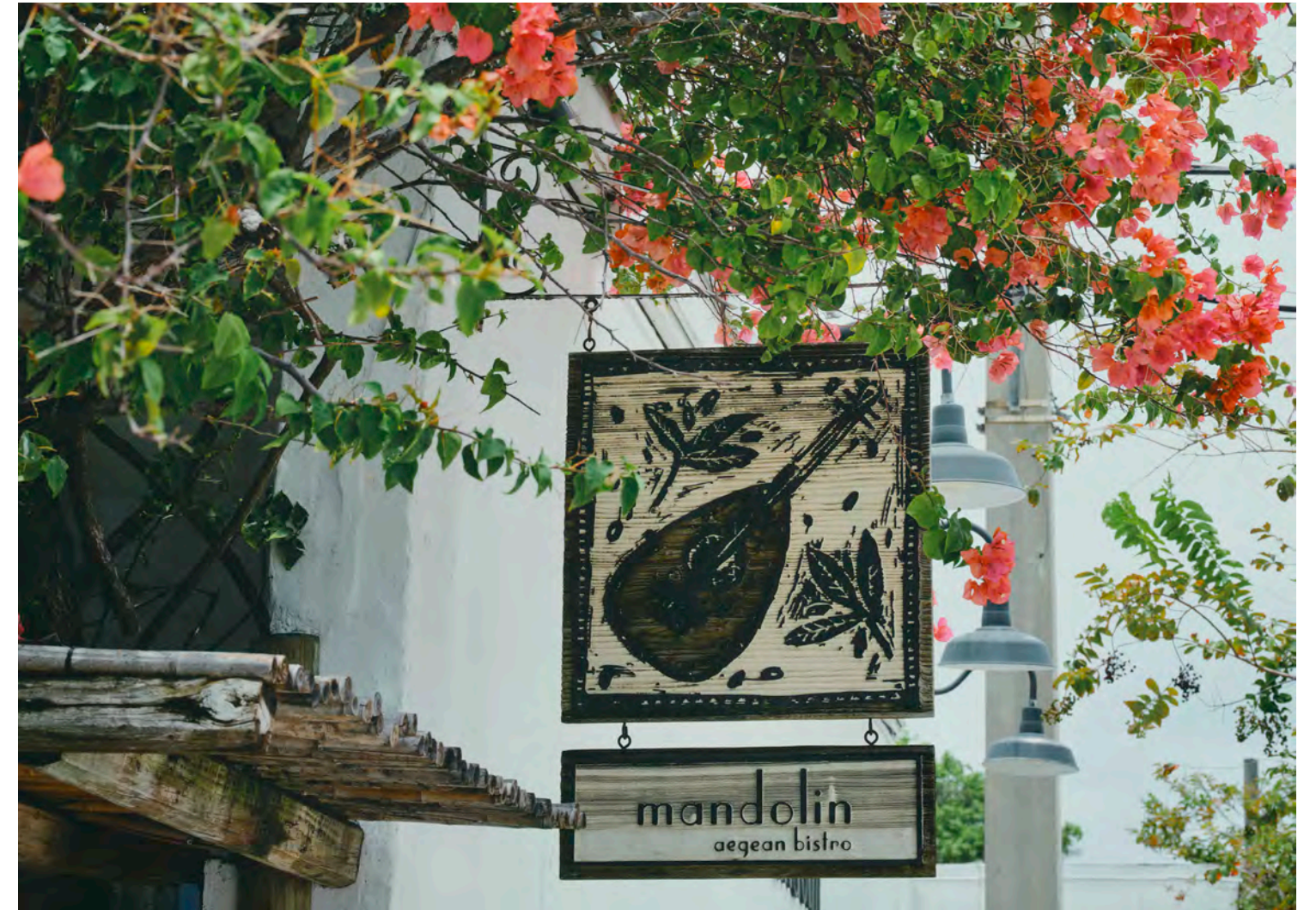
LEFT Joe's Stone Crab



RIGHT Casa Tua



OCEAN TERRACE



LEFT Lucali Miami Beach

CENTER COTE Miami

RIGHT Mandolin Aegean Bistro

RECREATION

Life in Miami naturally unfolds outdoors. The area's turquoise waterways, enchanting inlets, and numerous marinas make it a premier boating destination, and elite clubs host world-class golf.

Designed by Raymond Jungles, the Miami Beach Botanical Garden is a tranquil urban oasis of palms, orchids, and lily pads, while the historic Miami Beach Bandshell presents outdoor performances beside the ocean.



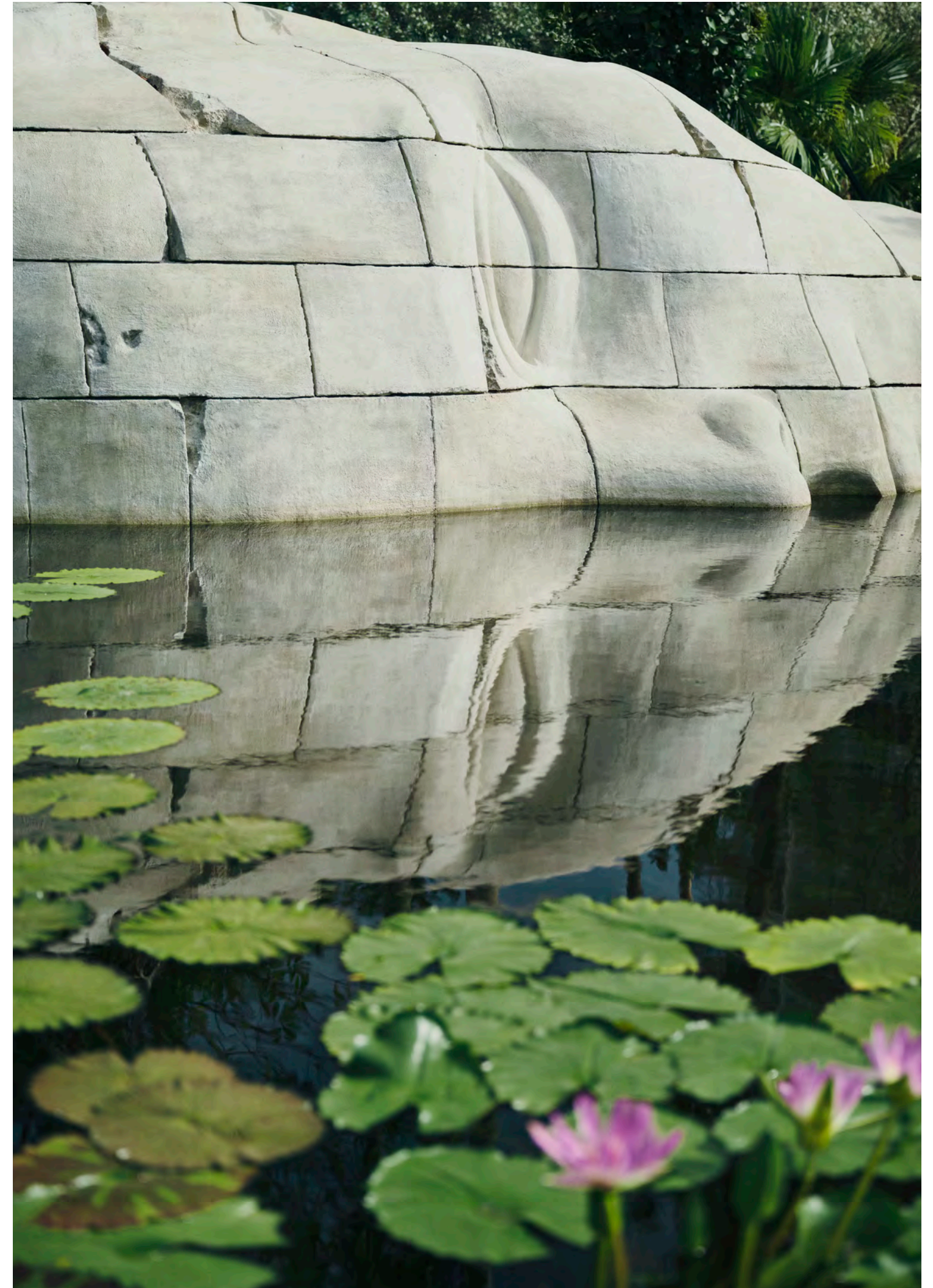


LEFT Miami Beach Bandshell

RIGHT Sunset Harbour Yacht Club

OCEAN TERRACE PARK

Acclaimed landscape architect Raymond Jungles drew on the work of his mentor, Brazilian modernist Roberto Burle Marx, to design this tropical oasis, which is thick in native palms, gumbos, buttonwoods, and spider lilies. Sinuous pathways wind by cascading fountains, secluded gardens, and *Reflection*, a commissioned sculpture by globally renowned French artist Prune Nourry, whose work evokes memory, resilience, and the role of women in history.







LEFT A sculptural park bench offering a moment of respite

RIGHT *Reflection* by Prune Nourry in Ocean Terrace Park

RETAIL

Luxury and specialty shops fill Ocean Terrace's 15,000 square feet of street-level retail, offering essentials for daily life and special occasions. The collection of exquisite boutiques forms a captivating, village-like atmosphere just moments from the beach.



VISIONARIES



VISIONARIES

RENOWNED LEADERS IN REAL ESTATE,
ARCHITECTURE, AND LANDSCAPE DESIGN
WHO SHARE A DISCERNING EYE FOR WHAT
MAKES A PLACE EXTRAORDINARY.

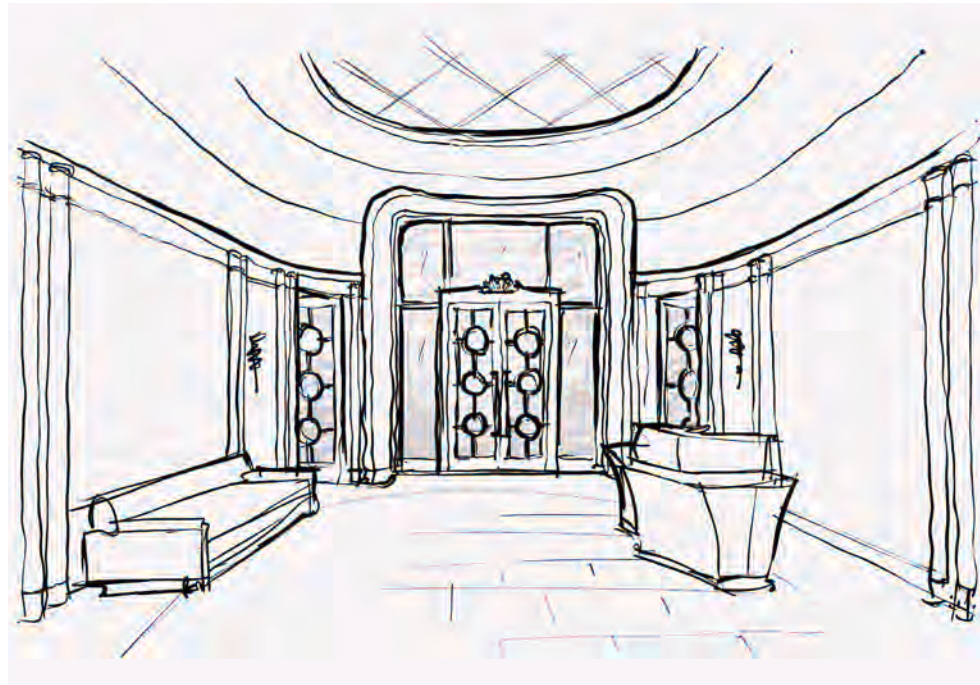


VISIONARIES

Only a partnership of true visionaries could bring Ocean Terrace to life. This once-in-a-generation project unites internationally acclaimed leaders in real estate, architecture, interior design, and landscape design who share a discerning eye for what makes a place extraordinary. They imagined a unique destination where residents could feel intimately connected to the ocean—with waves shimmering just outside their windows and days suffused with salt air—while enjoying the services and lifestyle of a five-star resort. Spanning water-view pools, glamorous restaurants and bars, curated retail, and tropical gardens, the masterful result transcends architecture to become part of the cultural fabric of Miami Beach.



RIGHT The RAMSA team of Partners Paul Whalen and Michael Jones, and Donald Silberman



“OUR INTERIORS INTERPRET ART DECO AND MIAMI MODERN THROUGH A LENS OF MID-CENTURY TROPICAL DESIGN, RESPONDING TO THE LUSH GARDENS OF OCEAN TERRACE AND CREATING A FRESH VISION FOR 21ST-CENTURY MIAMI BEACH.”

PAUL WHALEN
PARTNER AT RAMSA

RAMSA INTERIOR DESIGN ARCHITECT

RAMSA (Robert A.M. Stern Architects) is a multidisciplinary design firm with an international reputation for world-class residential, commercial, and institutional work. RAMSA's research-driven practice unites time-honored principles with forward-looking innovation to create designs of lasting value and significance. RAMSA brings its classical style, respect for local context, and attention to detail to the interiors of Ocean Terrace.



LEFT Sketch of the Ocean Terrace lobby

RIGHT RAMSA's Frances Calosso
and Partner Paul Whalen

WITKOFF DEVELOPER

As the creator of the finest landmark luxury residential and hospitality destinations, Witkoff distinguishes itself as part developer, part investor, and part landscape-changer. The firm has earned a reputation for ambitious, market-making projects that anticipate and shape the next great neighborhoods. Witkoff has become the leading player in the luxury market, having developed such iconic properties as The Shore Club, The Residences at Shell Bay, One High Line, 150 Charles Street, and the West Hollywood EDITION. Headquartered in Miami, the privately held, global real estate development and investment firm was founded by Steven Witkoff in 1997.



LEFT The Shore Club in Miami Beach

RIGHT Alex Witkoff

“OCEAN TERRACE REPRESENTS AN UNPRECEDENTED SCALE OF AMBITION. IT IS TRULY A WORLD UNTO ITSELF AND OFFERS AN ENTIRELY NEW WAY TO EXPERIENCE MIAMI BEACH OCEANFRONT LIVING.”

ALEX WITKOFF
CEO OF WITKOFF



“OUR GOAL WAS TO CREATE AN ICONIC RESIDENTIAL DEVELOPMENT, A DESTINATION ELEVATED TO THE HIGHEST STANDARDS WHILE EMBRACING ITS HISTORIC CHARM AND SENSE OF COMMUNITY.”

SANDOR SCHER
PARTNER AT OCEAN TERRACE HOLDINGS



OCEAN TERRACE HOLDINGS DEVELOPMENT PARTNER

Led by co-founders Alex Blavatnik and Sandor Scher, Ocean Terrace Holdings is a venture formed for the purpose of developing one of the largest oceanfront assemblages in Miami Beach. The development represents their collective expertise and vision for a new standard of living in residential, luxury hospitality, and lifestyle retail. Their visionary leadership spans across the sectors of hospitality, luxury residential, real estate, fashion, music, and technology.



“OCEAN TERRACE IS A TESTAMENT TO OUR VISION, BLENDING TIMELESS ARCHITECTURE AND SOPHISTICATED INTERIORS FOR GRACIOUS LIVING.”

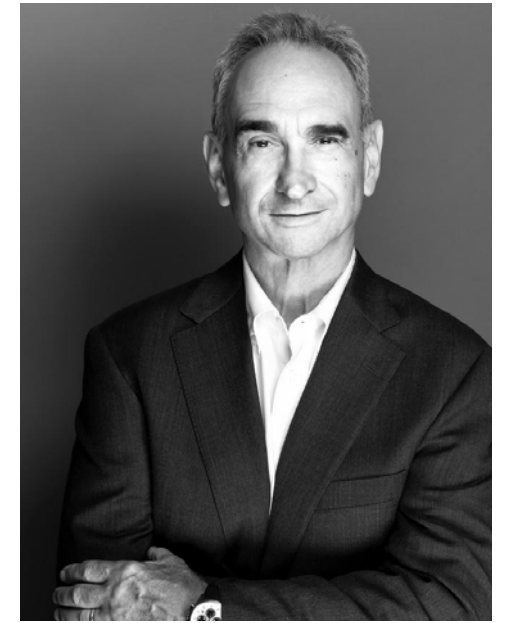
ALEX BLAVATNIK
PARTNER AT OCEAN TERRACE HOLDINGS



LEFT Ocean Terrace
CENTER Sandor Scher
RIGHT Alex Blavatnik

REVUELTA ARCHITECTURE INTERNATIONAL EXTERIOR ARCHITECT

Revuelta Architecture International has an extensive portfolio in South Florida comprising commercial, hospitality, and residential projects, including Bristol Tower and the Santa Maria. Principal Luis Revuelta began his career in 1972, and his eponymous studio is committed to providing clients with quality designs balanced with sustainable solutions, including the rehabilitation of historically significant structures. Revuelta is the exterior design architect and executive architect for the development and has tastefully integrated its notable historic structures within the overall architecture.



“ART DECO DESIGN ALWAYS
SHAPES YOUR PERSPECTIVE
AS AN ARCHITECT IN MIAMI
BEACH. IT’S INSPIRING
TO CREATE OUR OWN
INTERPRETATION OF ART DECO
AND MIAMI MODERN ALONGSIDE
HISTORICALLY SIGNIFICANT
STRUCTURES FROM THAT ERA.”

LUIS REVUELTA
PRINCIPAL AT REVUELTA ARCHITECTURE INTERNATIONAL

ENEALANDSCAPE ARCHITECTURE LANDSCAPE ARCHITECT, OCEAN TERRACE

Enzo Enea, the Swiss-based founder of Enea Landscape Architecture, creates integrated lush environments that add presence for hotel and residential developments throughout southern Florida, including properties in Fisher Island and Miami Beach. The firm designed the gardens for One High Line in New York and The St. Regis Residences, Miami, and conceived 1814 Brickell Park with the City of Miami. At Ocean Terrace, Enzo Enea is creating one of the largest landscaped amenity decks in the city, with 360-degree unobstructed views, building a signature environment for residents and hotel guests.



RAYMOND JUNGLES, INC. LANDSCAPE ARCHITECT, OCEAN TERRACE PARK

Since 1985, Raymond Jungles, Inc., has developed a dynamic practice inspired by the ethic of stewardship of the land, under the leadership of Raymond Jungles. Jungles is a protégé of Roberto Burle Marx—the famed Brazilian landscape architect behind the Copacabana promenade and gardens in Brasília—and his designs reveal a similar reverence for native plants and ecosystems. Based in Miami, the firm has crafted richly textured gardens for some of the most significant private estates in South Florida as well as many notable public commissions. It brings its sensitive yet innovative approach to the design of the pavilion beachfront bar and the five-acre Ocean Terrace Park.



LEFT Raymond Jungles

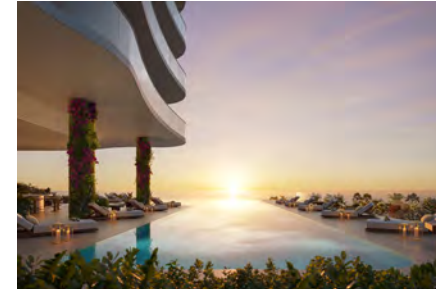
RIGHT Sketch of the Ocean Terrace Park



“DESIGNING A PARK OF THIS SCALE BY THE OCEAN IS AN EXTRAORDINARY HONOR AND ONE OF THE HIGHLIGHTS OF OUR 40 YEARS PRACTICING IN MIAMI.”

RAYMOND JUNGLES
FOUNDER OF RAYMOND JUNGLES, INC.

GALLERY



The Private Residential Pool
P. 01



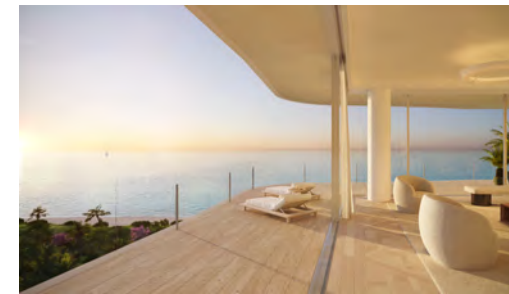
Ocean Terrace, Park View
P. 06



Ocean Terrace, Ocean View
P. 11



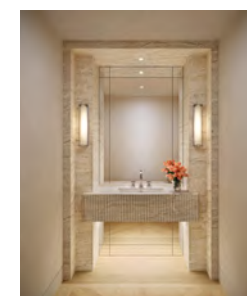
Boutique Residence, Penthouse 22 South Rooftop
P. 15



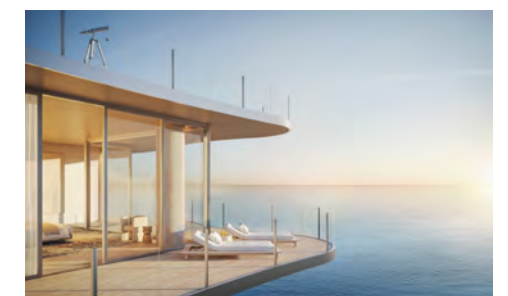
Boutique Residence, Northeast Corner Great Room
P. 16



Boutique Residence, Southeast Corner Great Room
P. 20



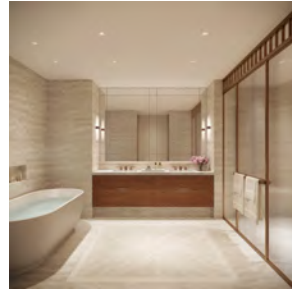
Boutique Residence, Powder Room
P. 23



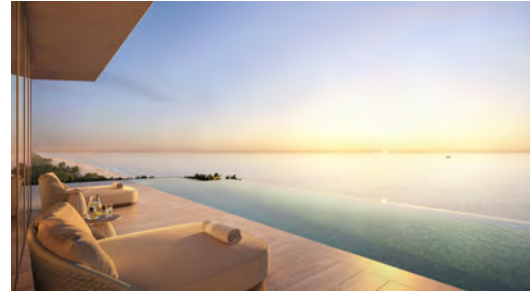
Boutique Residence, Penthouse Primary Bedroom
P. 26



Boutique Residence, Kitchen
P. 28



Boutique Residence, Primary Bathroom
P. 33



Boutique Residence, Penthouse 22 North Rooftop
P. 34



The Library
P. 60



The Tea Room
P. 64



Boutique Residence, Penthouse Great Room
P. 36



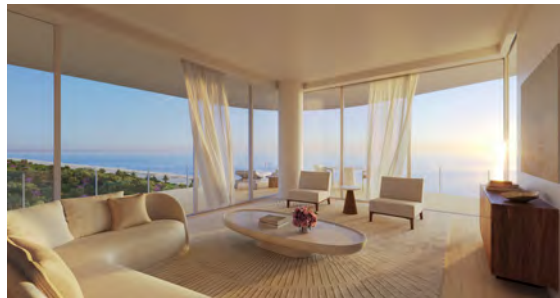
Resort Residence, Penthouse II North Rooftop
P. 39



The Indoor/Outdoor Fitness Center
P. 68



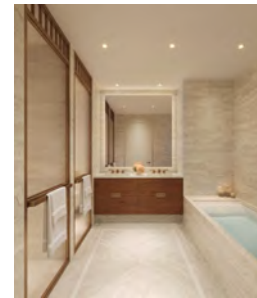
The Resort Pool
P. 76



Resort Residence, Northeast Corner Great Room
P. 40



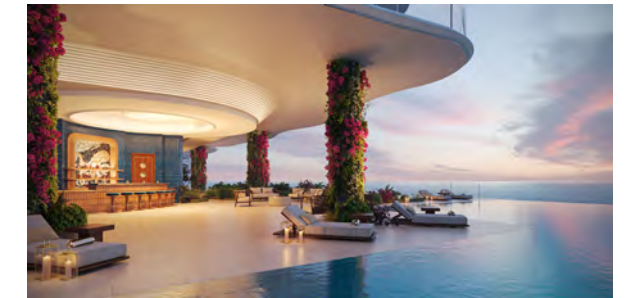
Resort Residence, Kitchen
P. 44



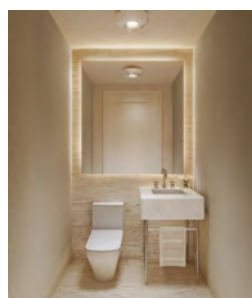
Resort Residence, Primary Bathroom
P. 46



The Ocean Terrace Sunrise Restaurant
P. 78



The Ocean Terrace Pool Bar
P. 84



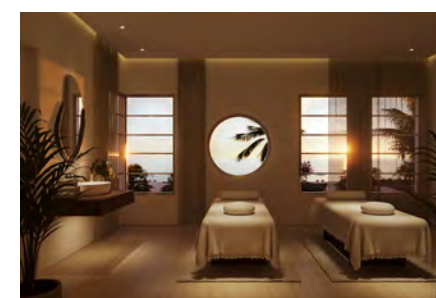
Resort Residence, Powder Room
P. 47



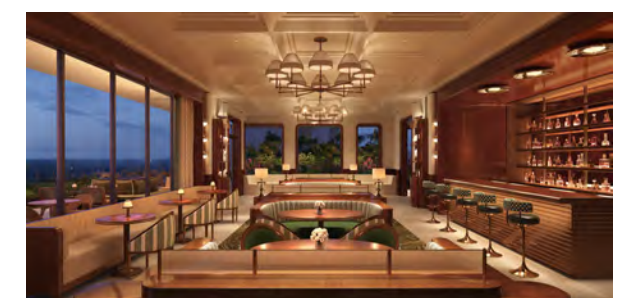
Private Residential Porte-Cochère
P. 54



Boutique Residential Lobby
P. 58



Oceanfront Spa Treatment Room
P. 96



The Club Bar and Lounge
P. 100

OCEAN TERRACE

RESIDENCES

7400 OCEAN TERRACE, MIAMI BEACH, FL 33141

ORAL REPRESENTATIONS CANNOT BE RELIED UPON AS CORRECTLY STATING THE REPRESENTATIONS OF THE DEVELOPER. FOR CORRECT REPRESENTATIONS, MAKE REFERENCE TO THE DOCUMENTS REQUIRED BY SECTION 718.605, FLORIDA STATUTES, TO BE FURNISHED BY A DEVELOPER TO A BUYER OR LESSEE. THIS CONDOMINIUM IS BEING DEVELOPED BY OCEAN TERRACE RESIDENTIAL LLC, A DELAWARE LIMITED LIABILITY COMPANY ("DEVELOPER"). NEITHER WITKOFF NOR OCEAN TERRACE HOLDINGS ARE THE DEVELOPER. THIS OFFERING IS MADE ONLY BY THE PROSPECTUS (OFFERING CIRCULAR) FOR THE CONDOMINIUM AND NO STATEMENT SHOULD BE RELIED UPON IF NOT MADE IN THE PROSPECTUS. THIS IS NOT INTENDED TO BE AN OFFER TO SELL NOR A SOLICITATION OF OFFERS TO BUY IN ANY JURISDICTION WHERE PROHIBITED BY LAW, AND YOUR ELIGIBILITY FOR PURCHASE WILL DEPEND UPON YOUR STATE OF RESIDENCY. ALL PLANS, FEATURES AND AMENITIES DEPICTED HEREIN ARE BASED UPON PRELIMINARY DEVELOPMENT PLANS AND ARE SUBJECT TO CHANGE WITHOUT NOTICE IN THE MANNER PROVIDED IN THE OFFERING DOCUMENTS. ALL RESIDENCE FEATURES AND FINISHES AND BUILDING AMENITIES ARE SUBJECT TO CHANGE, INCLUDING, WITHOUT LIMITATION, CHANGES IN MANUFACTURERS, BRANDS, AMENITIES, SERVICES AND/OR THE DESIGN TEAM. CERTAIN UNITS IN THE CONDOMINIUM MAY HAVE DIFFERENT RESIDENCE FEATURES. CONSULT THE PROSPECTUS AND YOUR PURCHASE AGREEMENT FOR DETAILS REGARDING THE ITEMS INCLUDED WITH YOUR UNIT OR THE TOWER IN WHICH YOUR UNIT IS LOCATED. PLANS, FEATURES AND AMENITIES DESCRIBED HEREIN MAY BE PROVIDED AT AN ADDITIONAL COST. NO GUARANTEES OR REPRESENTATIONS WHATSOEVER ARE MADE THAT ANY PLANS, FEATURES, AMENITIES OR FACILITIES WILL BE PROVIDED OR, IF PROVIDED, WILL BE OF THE SAME TYPE, SIZE, LOCATION OR NATURE AS DEPICTED OR DESCRIBED HEREIN. THE CONDOMINIUM VIEWS WILL VARY DEPENDING ON THE UNIT PURCHASED. NO VIEW IS GUARANTEED. NO GUARANTEE OR REPRESENTATIONS WHATSOEVER ARE MADE THAT EXISTING OR FUTURE VIEWS OF THE PROJECT AND SURROUNDING AREAS DEPICTED BY ARTIST'S CONCEPTUAL RENDERINGS OR OTHERWISE DESCRIBED HEREIN WILL BE PROVIDED, OR IF PROVIDED, WILL BE AS DEPICTED OR DESCRIBED HEREIN. ADDITIONALLY, CEILING HEIGHTS ARE MEASURED FROM TOP OF SLAB TO TOP OF SLAB AND EXCLUDE AREAS WHERE ANY SOFFITS, HOLDINGS, DROP AND/OR SUSPENDED CEILINGS AND/OR LIGHT FIXTURES MAY BE INSTALLED. AS SUCH, THE REFERENCED CEILING HEIGHT MAY NOT REPRESENT ACTUAL CEILING CLEARANCE. ALL STATED DIMENSIONS, SQUARE FOOTAGES AND SIZES ARE APPROXIMATE AND SUBJECT TO CHANGE. UNAUTHORIZED REPRODUCTION, DISPLAY OR OTHER DISSEMINATION OF SUCH MATERIALS IS STRICTLY PROHIBITED AND CONSTITUTES COPYRIGHT INFRINGEMENT. NO REAL ESTATE BROKER IS AUTHORIZED TO MAKE ANY REPRESENTATIONS OR OTHER STATEMENTS REGARDING THE PROJECTS, AND NO AGREEMENTS WITH, DEPOSITS PAID TO, OR OTHER ARRANGEMENTS MADE WITH ANY REAL ESTATE BROKER ARE OR SHALL BE BINDING ON THE DEVELOPER. THE CONDOMINIUM'S GRAPHICS, RENDERINGS AND TEXT PROVIDED HEREIN ARE COPYRIGHTED WORKS OWNED BY THE DEVELOPER. ALL RIGHTS RESERVED.

