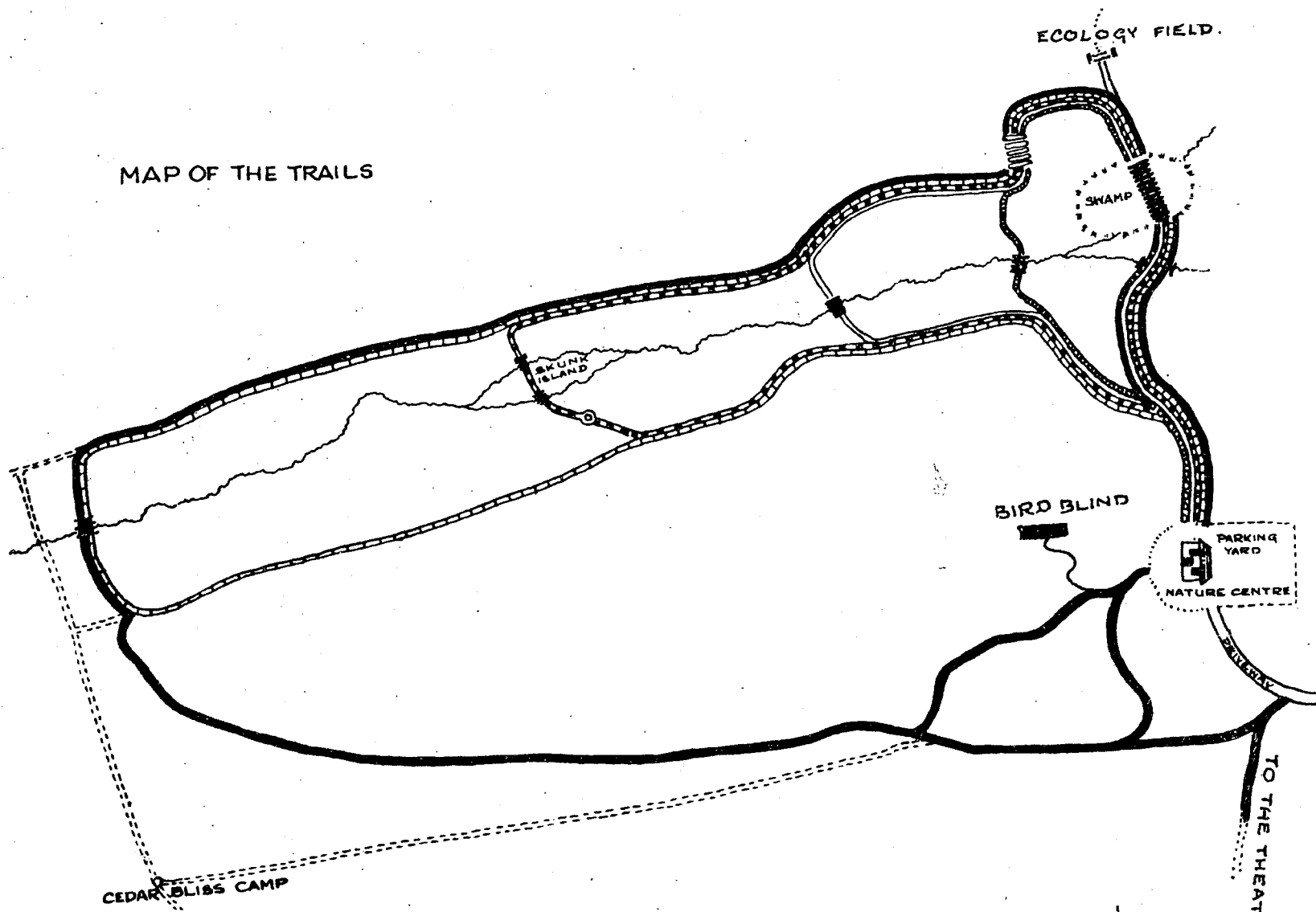


MAP OF THE TRAILS



SWAMP TRAIL	YELLOW	25 min:		$\frac{1}{2}$ MILE
SPRING BEAUTY TRAIL	WHITE	35 min:		$\frac{3}{4}$ "
BIRDWATCHERS' TRAIL	GREEN	45 min:		$\frac{4}{5}$ "
RED CEDAR TRAIL	BLUE	60 min:		1 "
LOIS SHOEMAKER	RED	55 min:		1 "
OPEN AIR THEATRE TRAIL	PINK	20 min:		$\frac{1}{2}$ "