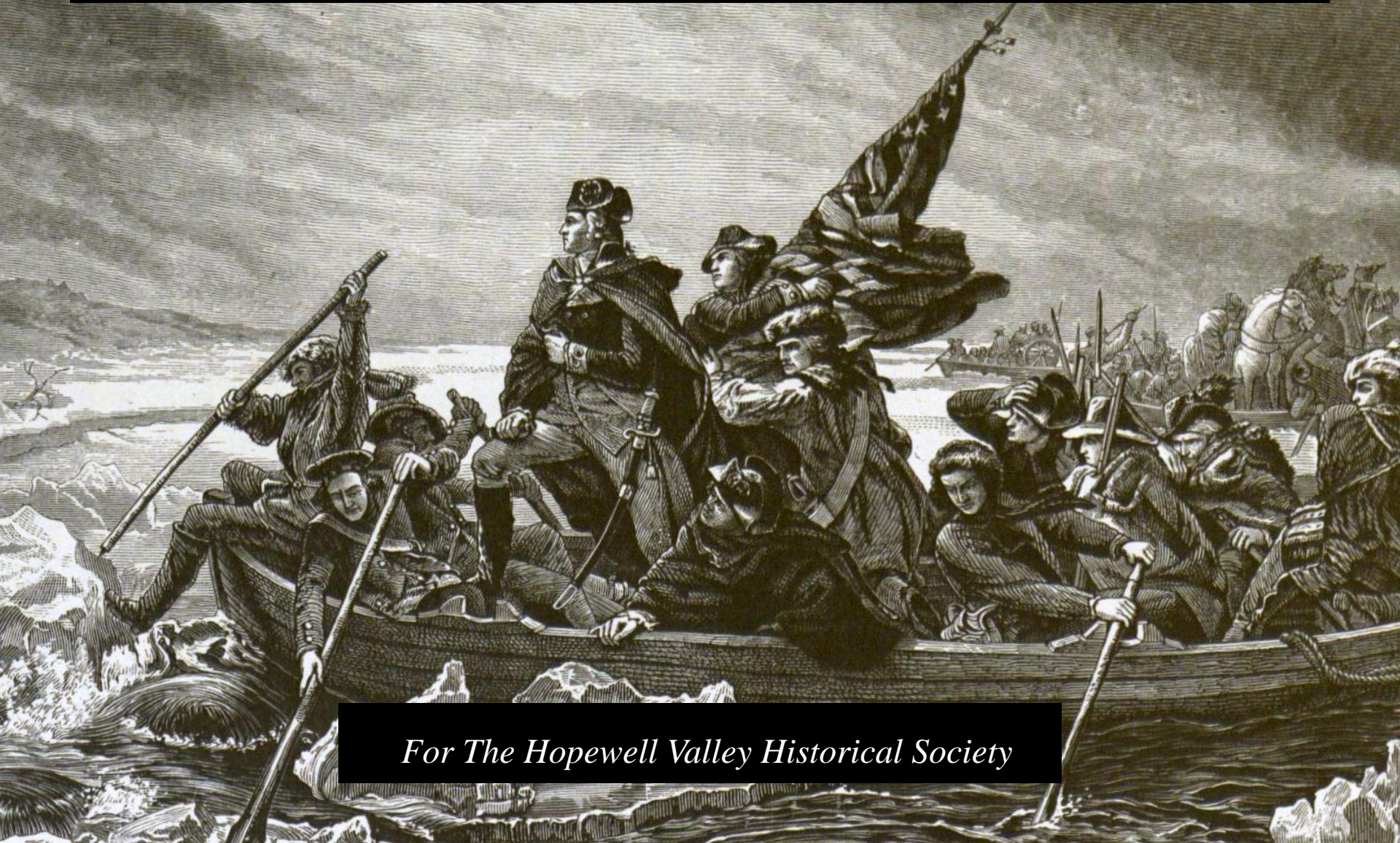


Where Washington Once Led

A History of New Jersey's Washington Crossing State Park



For The Hopewell Valley Historical Society

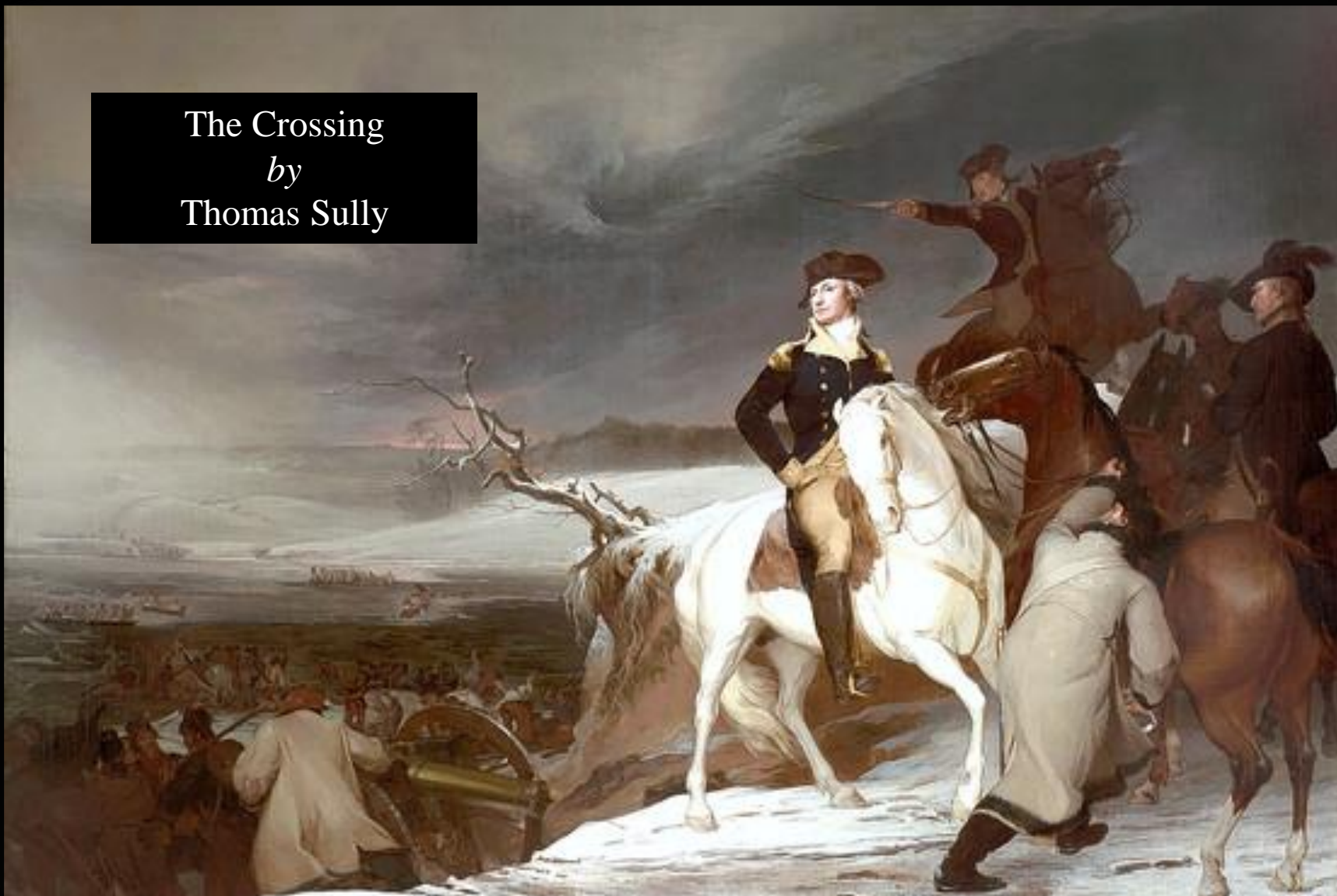


William Farkas
A Man With A Vision For a Book On The Park's History

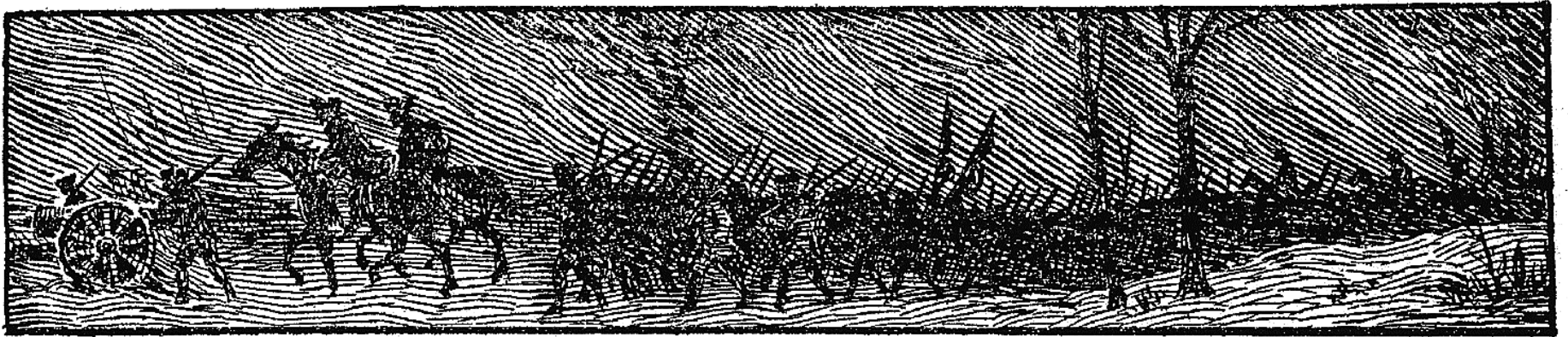
The Crossing

December 25-26, 1776

The Crossing
by
Thomas Sully



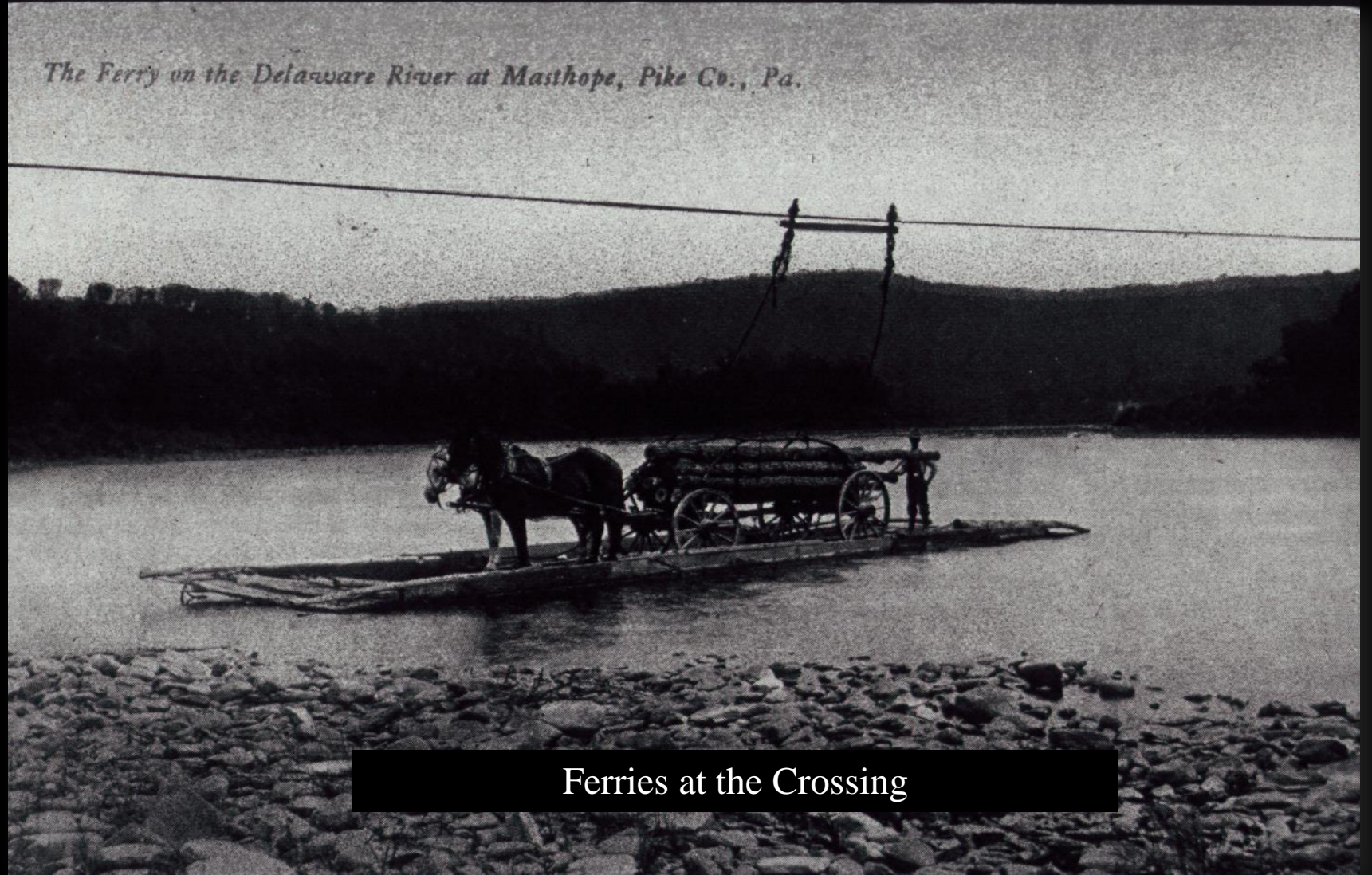
The March To Trenton



The Setting

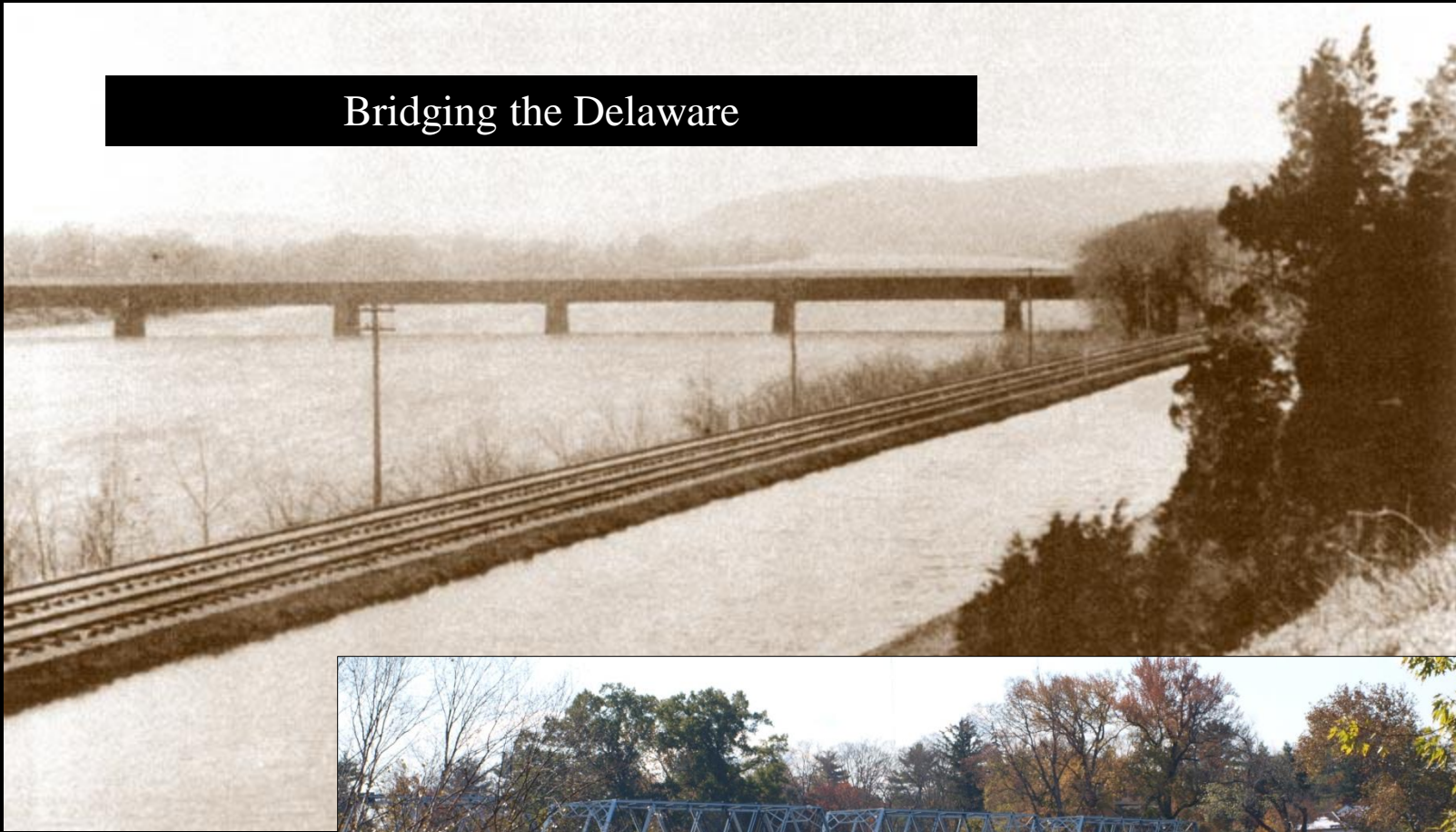
1830-1895

The Ferry on the Delaware River at Masthope, Pike Co., Pa.



Ferries at the Crossing

Bridging the Delaware





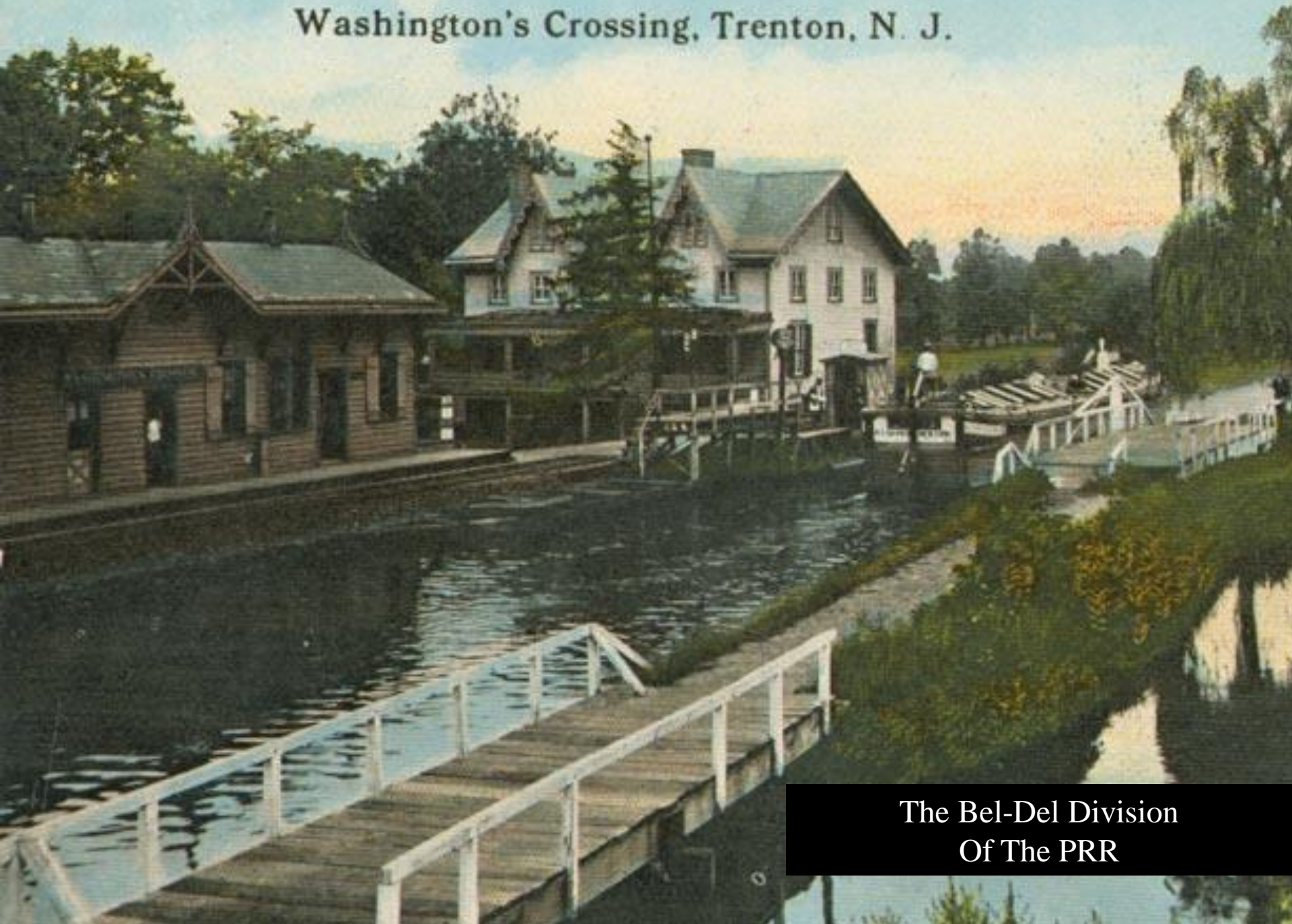
Bridge
Signboard
By
Edward Hicks

WASHINGTON Crossed here
Christmas eve 1776. aided by Genl.
Sullivan, Greene, Lord, Sterling, Mercer & St. Clair.



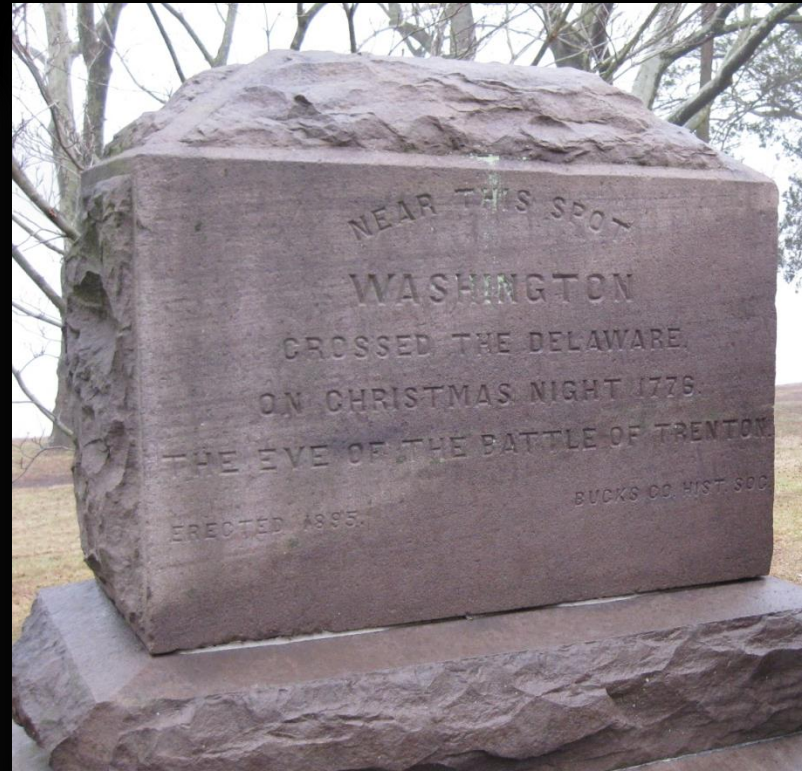
The D & R Canal

Washington's Crossing, Trenton, N. J.



The Bel-Del Division
Of The PRR

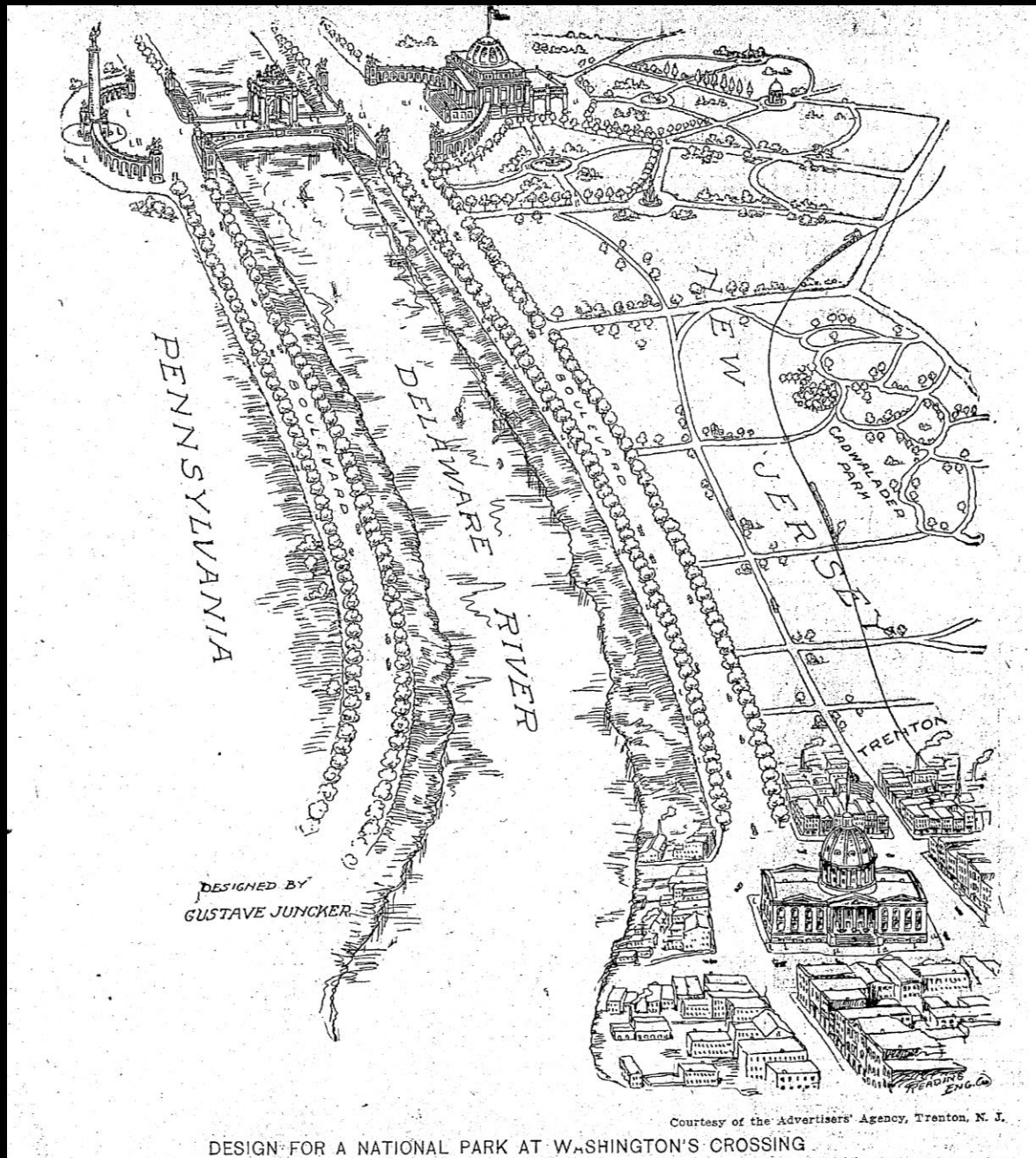
Calls For A Park
1895-1909



The Society of the
Cincinnati
And
Bucks County
Historical society
Memorials
Erected 1895

Calls For
National Park
And
Memorial
Bridge

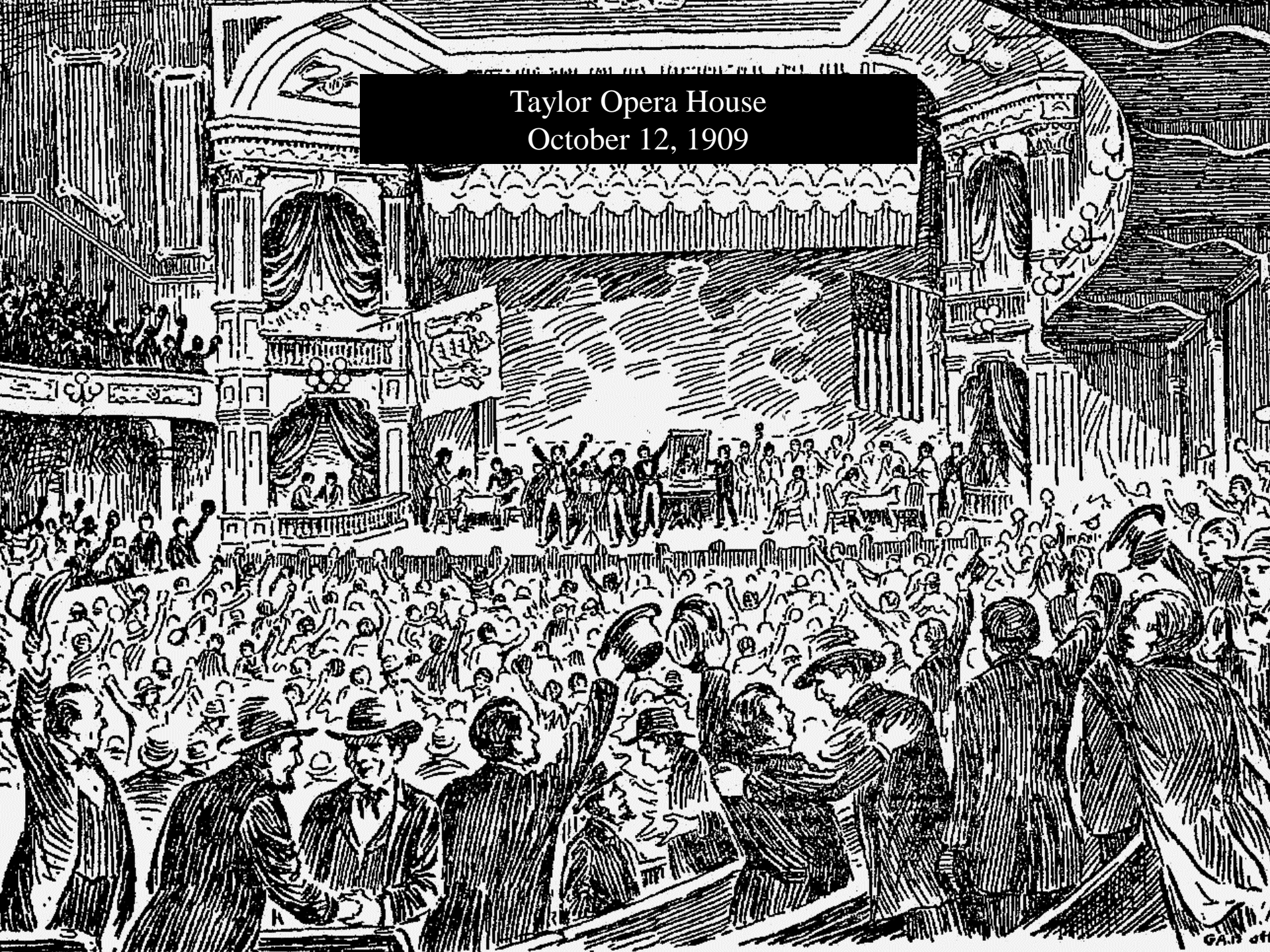
The
Juncker Plan



Courtesy of the Advertisers' Agency, Trenton, N. J.

DESIGN FOR A NATIONAL PARK AT WASHINGTON'S CROSSING

Taylor Opera House
October 12, 1909



The Park's Creation 1909-1930

BIRTHDAY
BULLETIN



—Photo by Gilbert & Bacon.

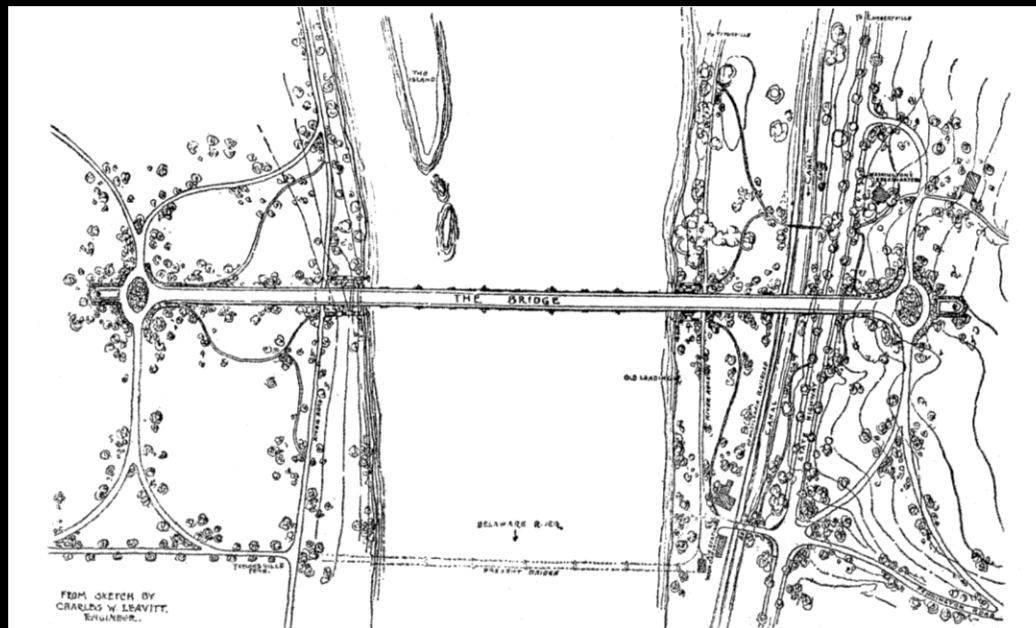
DR. I. P. STRITTMATTER

The Inquirer extends greetings to a widely-known physician.





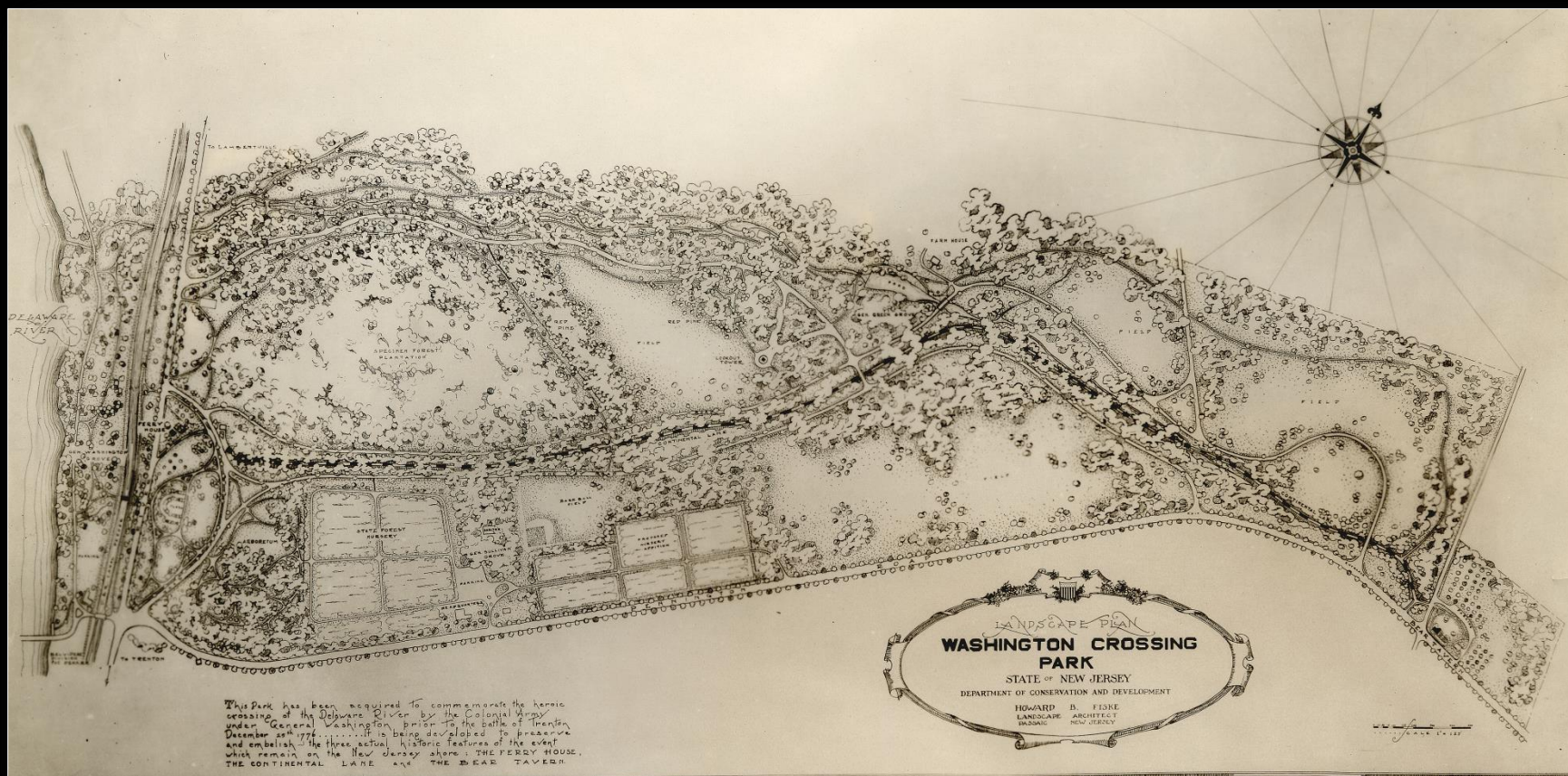
George Washington Memorial Bridge



The "Ten Acre Plan"



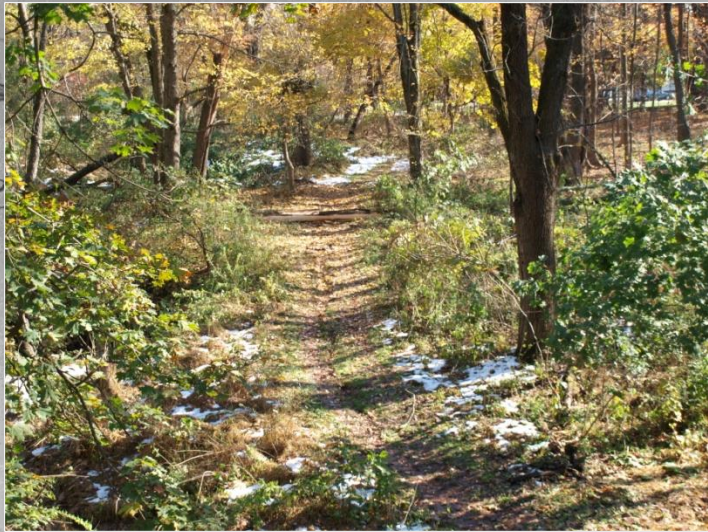
The Fiske Landscape Plan 1925



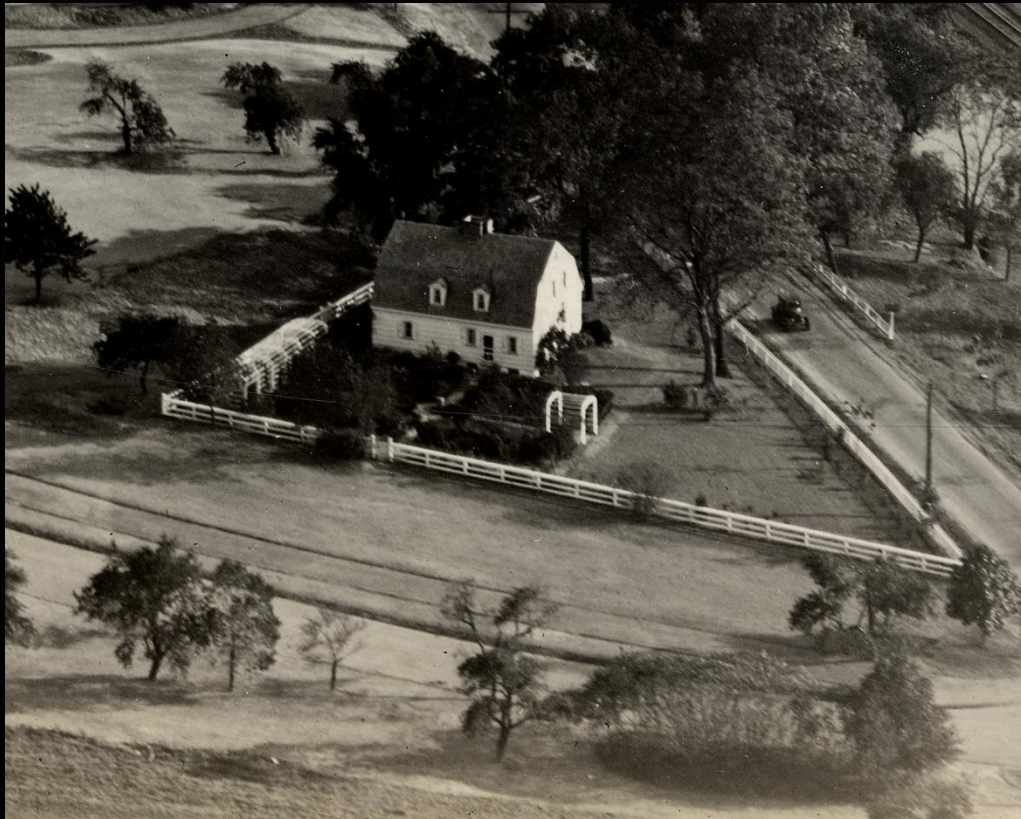


The Ferry House Renovations 1924





Rerouting of Parts of Continental Lane



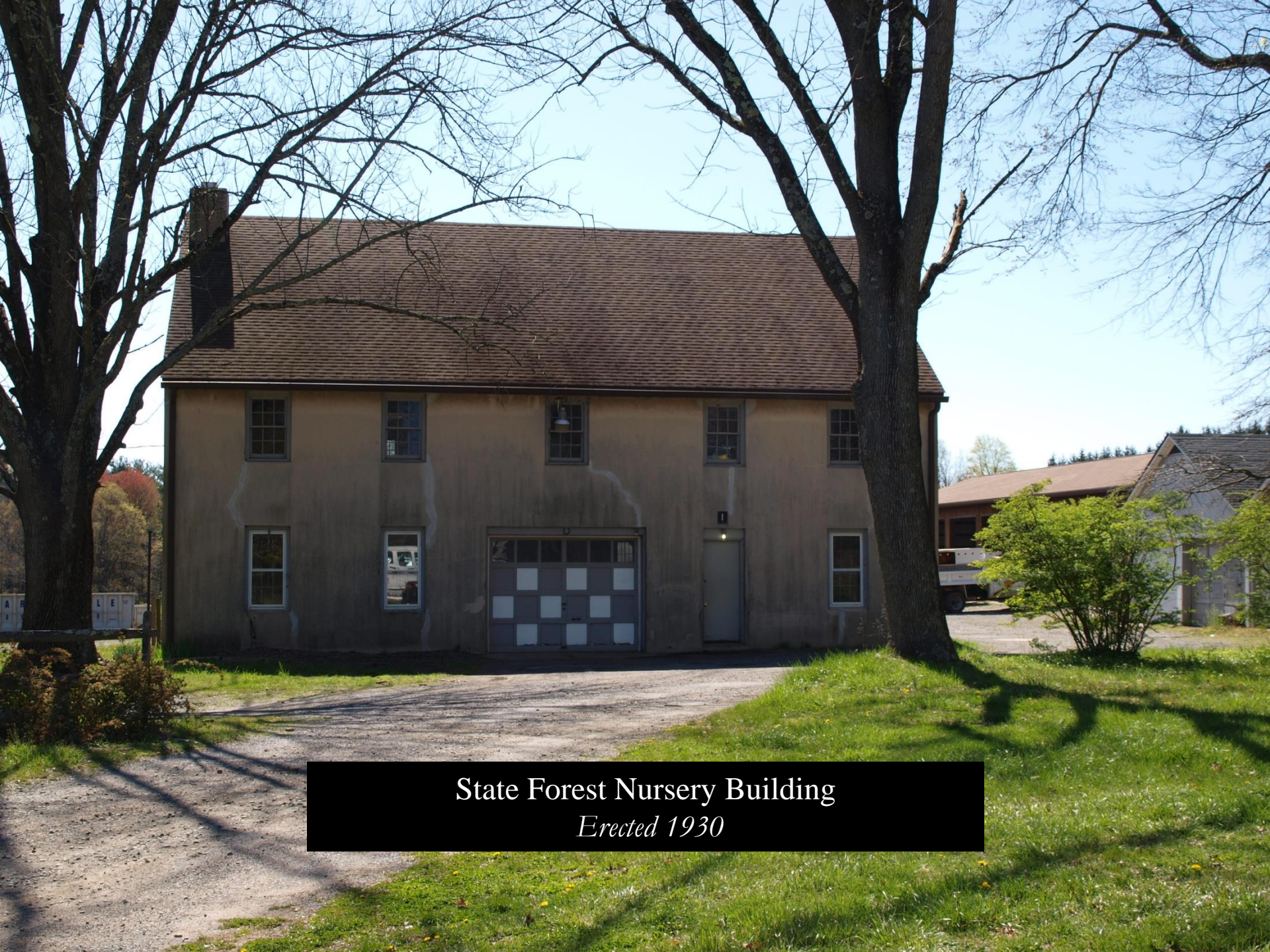
Sesquicentennial of the Declaration of independence
1926

State Forest Nursery
1925



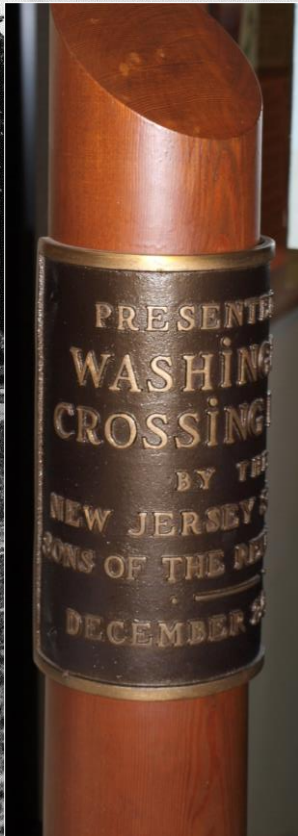
A photograph of a forest path. The path is a dirt trail that winds through a dense forest of tall, thin trees. The trees have light-colored bark and are spaced evenly along the path. Sunlight filters through the canopy, creating dappled shadows on the ground. The overall atmosphere is peaceful and natural. A black rectangular box is overlaid on the upper portion of the image, containing white text.

Forest Plantations
Established 1925



State Forest Nursery Building
Erected 1930

New Jersey
Sons of the Revolution
Flag Pole
Erected 1927



An aerial black and white photograph of a golf course under construction in 1927. The foreground shows several large, circular fairways and a central clubhouse building. A road and a railway line run along the right side of the image. In the background, a residential area with houses is visible on a hillside. A dark banner with white text is overlaid on the upper left portion of the image.

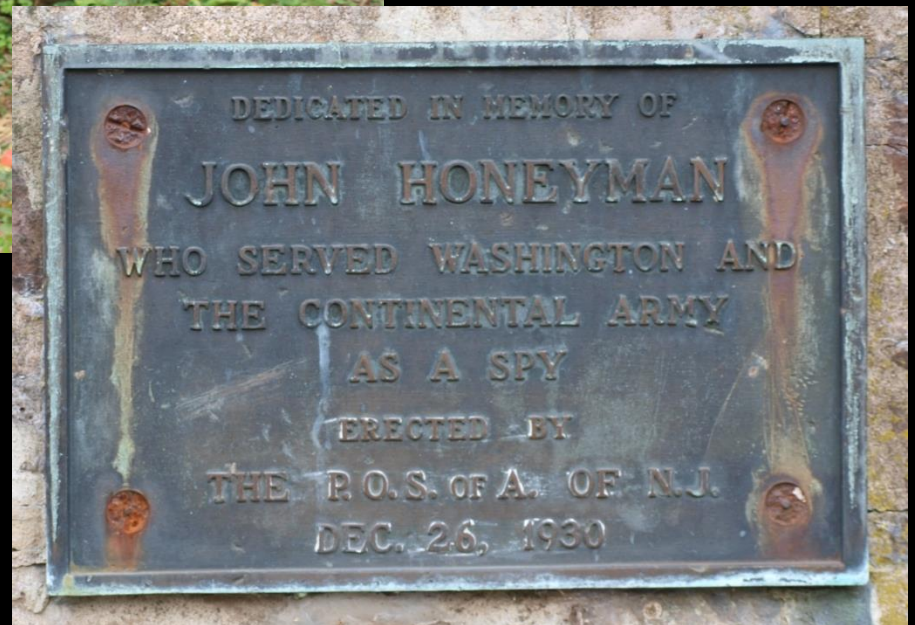
Park's Official Dedication
1927



The DAR
Memorial
Erected 1928



The Honeyman Memorial
Erected 1930



George Washington Bicentennial
Arbor Day 1932



American Tree Association Memorial

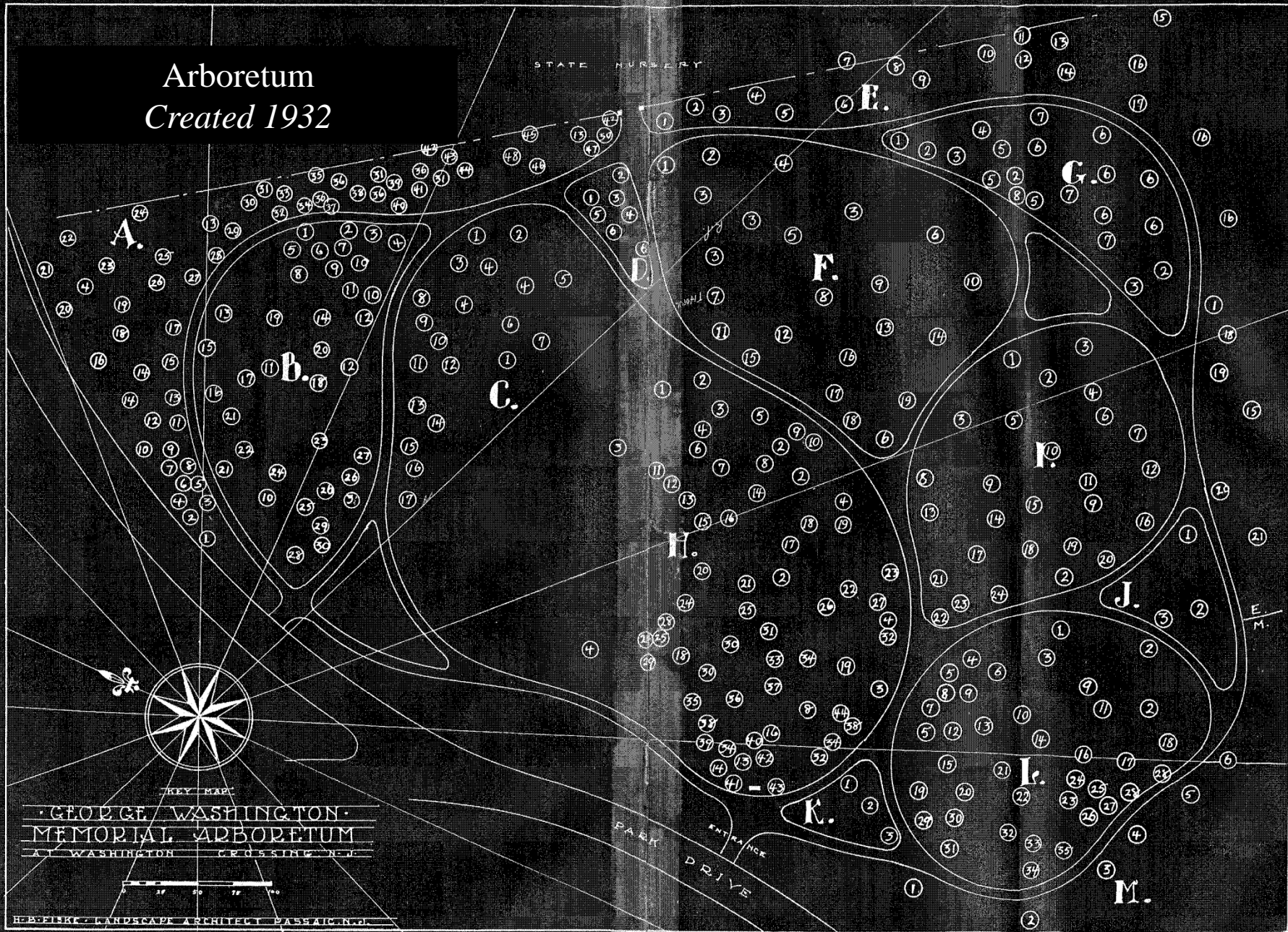


Sullivan Drive Plantings 1932



Arboretum
Created 1932

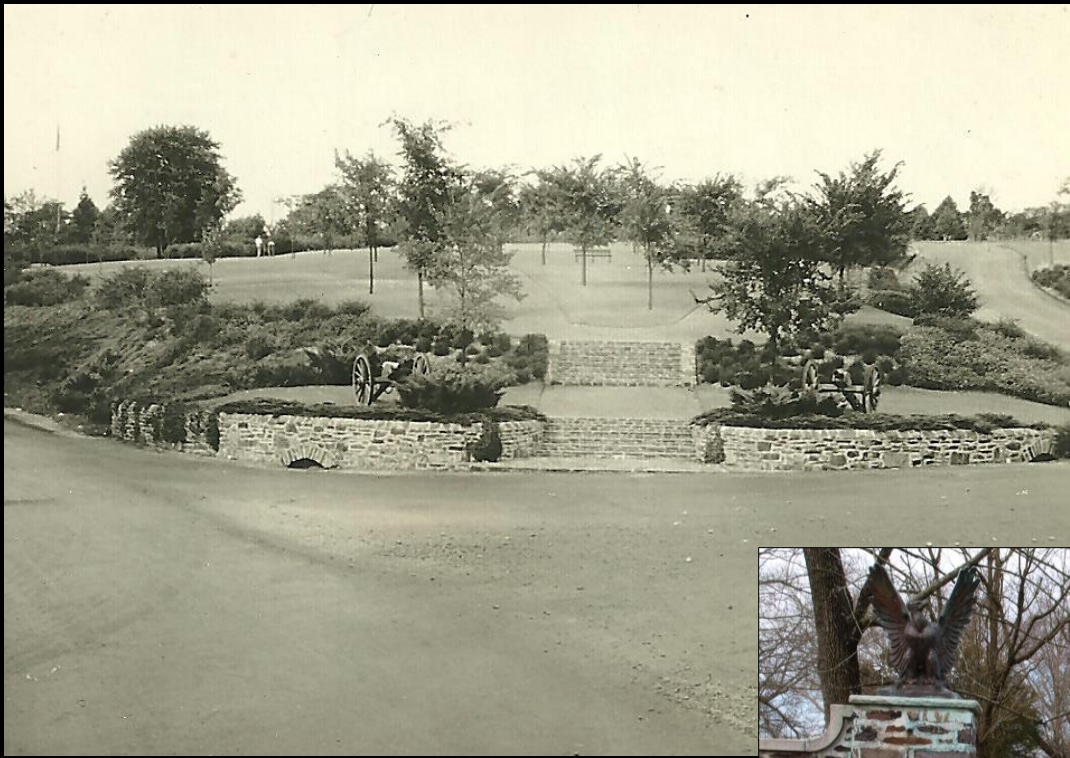
STATE NURSERY



KEY MAP
GEORGE WASHINGTON
MEMORIAL ARBORETUM
AT WASHINGTON CROSSING N.J.



H. B. FISKE, LANDSCAPE ARCHITECT, PASSAIC, N.J.



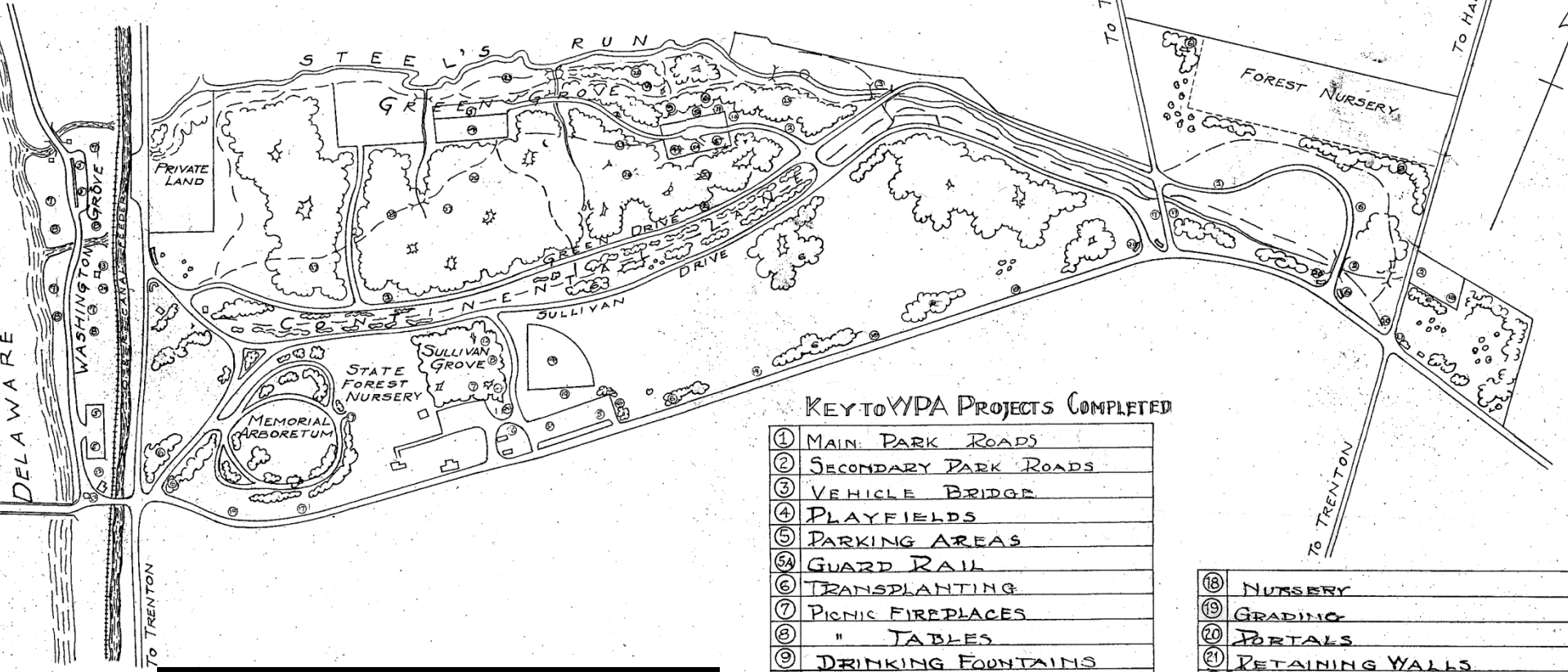
Bicentennial of George Washington's Birth
Colonial Gateway & Main Entrance
Created 1932

Colonial Dames Memorial
Erected 1932



Society of Colonial Wars
in the State of New Jersey
Erected 1932

The Depression years
1930-1942

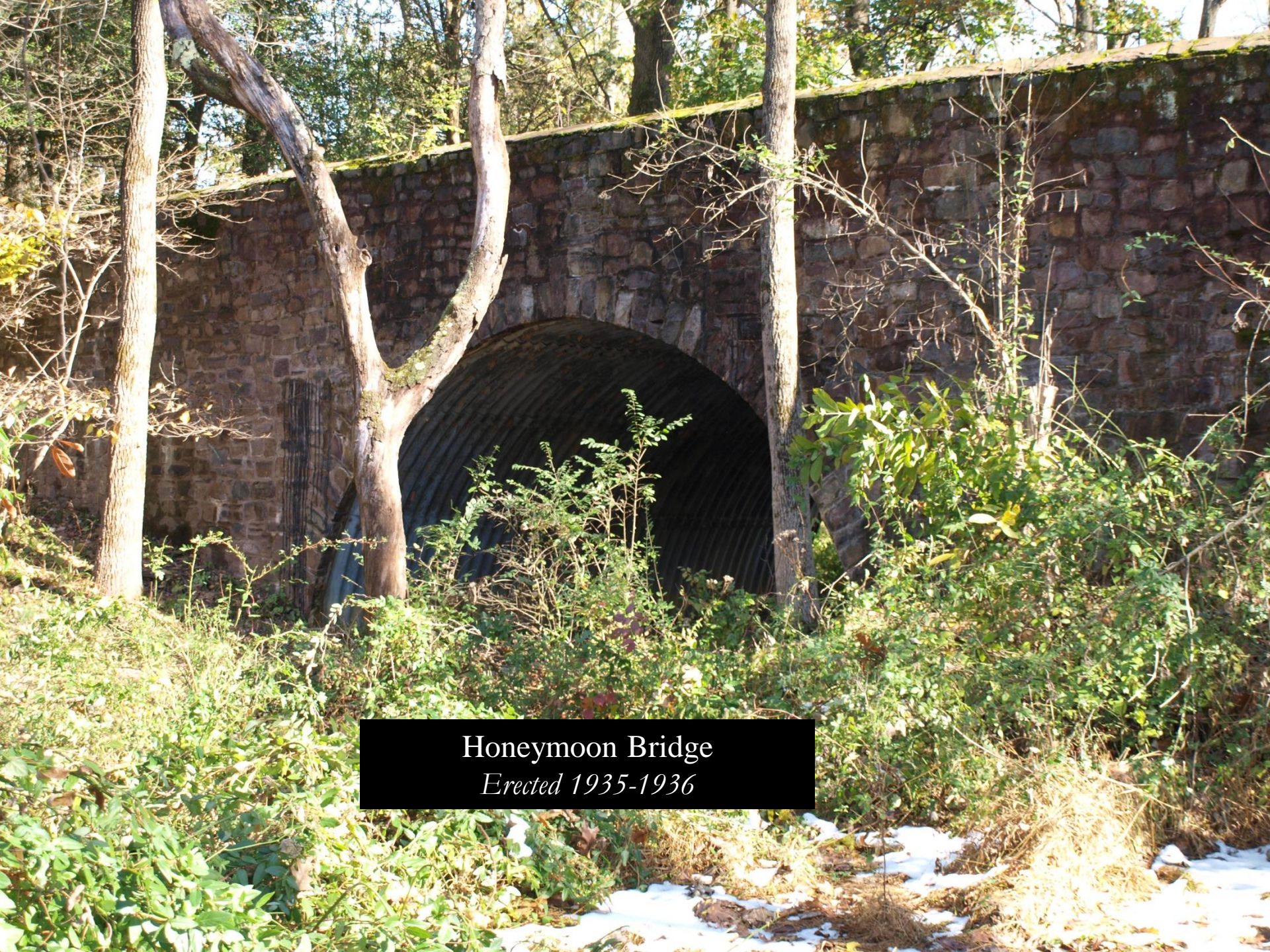


KEY TO WPA PROJECTS COMPLETED

①	MAIN PARK ROADS
②	SECONDARY PARK ROADS
③	VEHICLE BRIDGE
④	PLAYFIELDS
⑤	PARKING AREAS
⑥	GUARD RAIL
⑦	TRANSPLANTING
⑧	PICNIC FIREPLACES
⑨	" TABLES
⑩	DRINKING FOUNTAINS
⑪	PUMP HOUSE
⑫	WATER SUPPLY LINE
⑬	SHELTER REMODELLED
⑭	LATRINES "
⑮	DAM
⑯	ADMINISTRATION BUILDING
⑰	EQUIPMENT BUILDING
⑱	RUBBLE GUTTERS

⑲	NURSERY
⑲	GRADING
⑲	PORTALS
⑲	RETAINING WALLS
⑲	DEMOLITION
⑲	FOOT TRAILS
⑲	GRAVEL WALKS
⑲	WOODS IMPROVEMENT
⑲	PRUNING PLANTATIONS
⑲	GRUBBING "
⑲	STREAM IMPROVEMENT

The Works Progress
Administration
1935-1941



Honeymoon Bridge
Erected 1935-1936



Stone Arch Bridge
Erected 1935-1936

Greene Drive
Erected 1935-1936



Sullivan Grove Pavilion
Renovated by The WPA
1935-1936

IMPROVED BY
WORKS PROGRESS
ADMINISTRATION
1935 - 1936

A photograph of a stone pavilion in a forest. The pavilion has a moss-covered roof and several wooden picnic tables inside and outside. The ground is covered in fallen leaves, and the trees are mostly bare, suggesting a late autumn or winter setting. A large tree trunk is in the foreground, partially obscuring the pavilion.

Green Grove Pavilion
Erected 1940



Green Grove Water Systems



Chestnut Grove Picnic area
hiking trails, and footbridges
And Entrance at St. George's



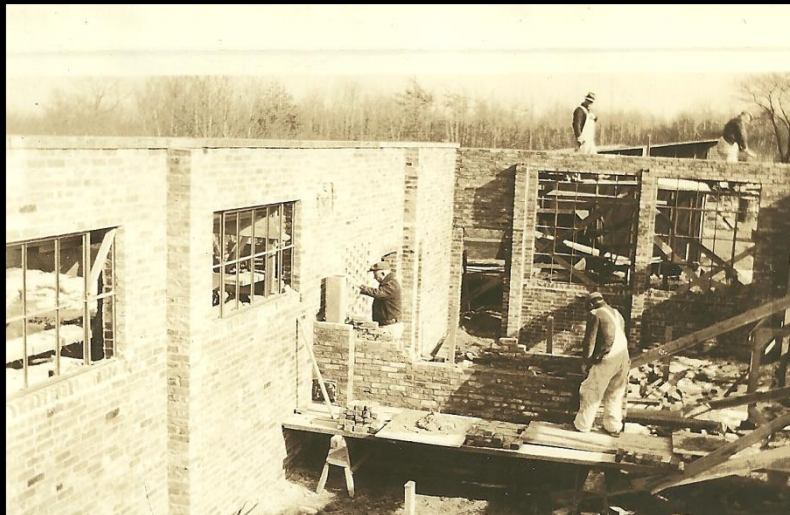


Steele's Run Improvements





Gates,
Administration Building
Equipment Building



The Quiet Years

1941-1958

Chow Time at Scout Camporal



Long Distance

Jerry Allard didn't have to yell "Come and get it!" more than once when he was ready to serve chow at the annual camporal of George Washington Council, Boy Scouts of

Du
Cl

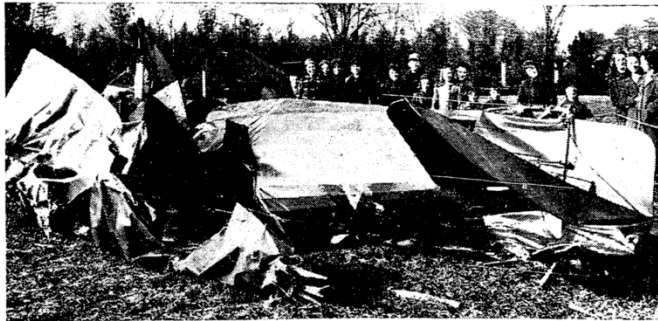
Gove
Of
3

Some qu
gross at
rection on
phase by
narrative.
Informal
planned, a
a program
ization. F
system lo
at the p
convention
The pos
ever of th



Visit of Lord Halifax
1944

Where Trenton Flier Met Death



Staff Photo

The wrecked plane which caused the death of Edward Butler, 41 years of age, when it crashed in Washington Crossing State Park early Friday afternoon, while the pilot was making a test flight, is pictured above. Butler was parachute tester for the Switlik Parachute Company and as an associate of Trenton Squadron 223-3, Civil Air Patrol, took an active part in flying missions of the

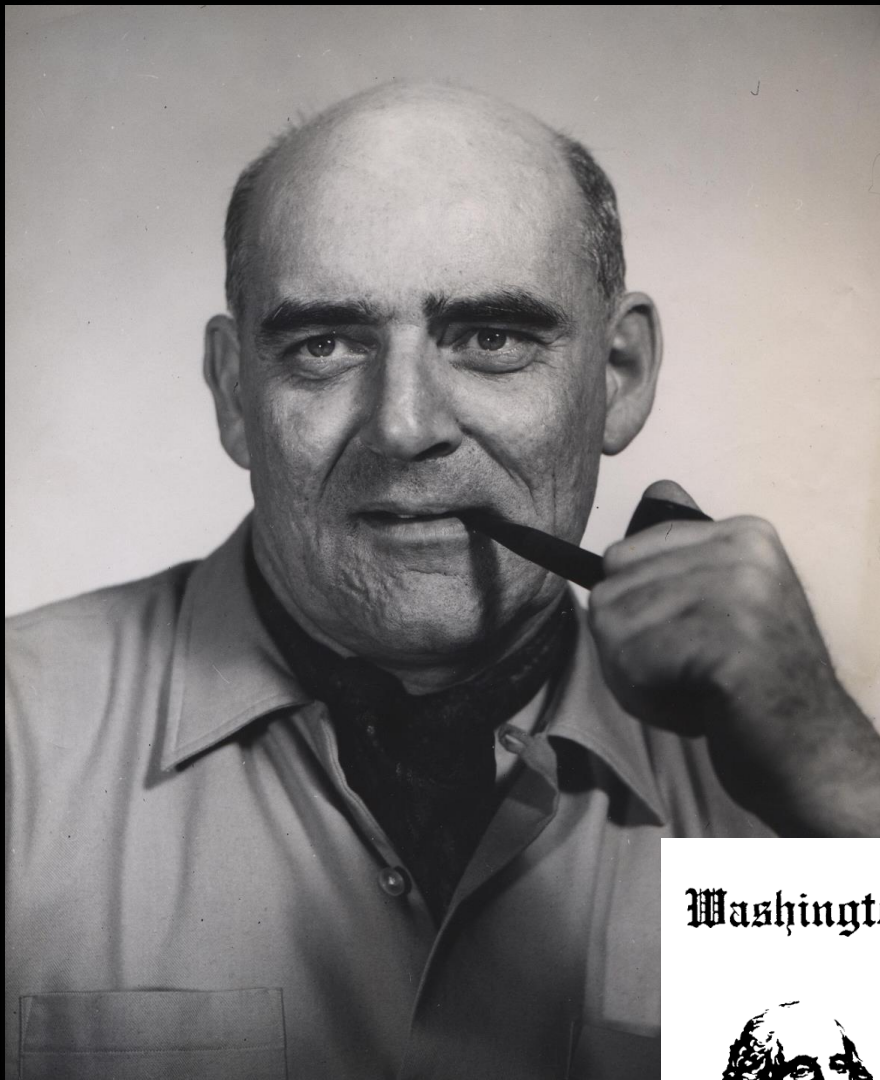
(Continued on Page 5, Part 3)

Rus
An
Ja

Four Bar
Off New
PT Boa
Madang

Japan is app
troops out of bor
baul to reinforce
tral New Britain
can advances up

The Bicentennial 1958-1976



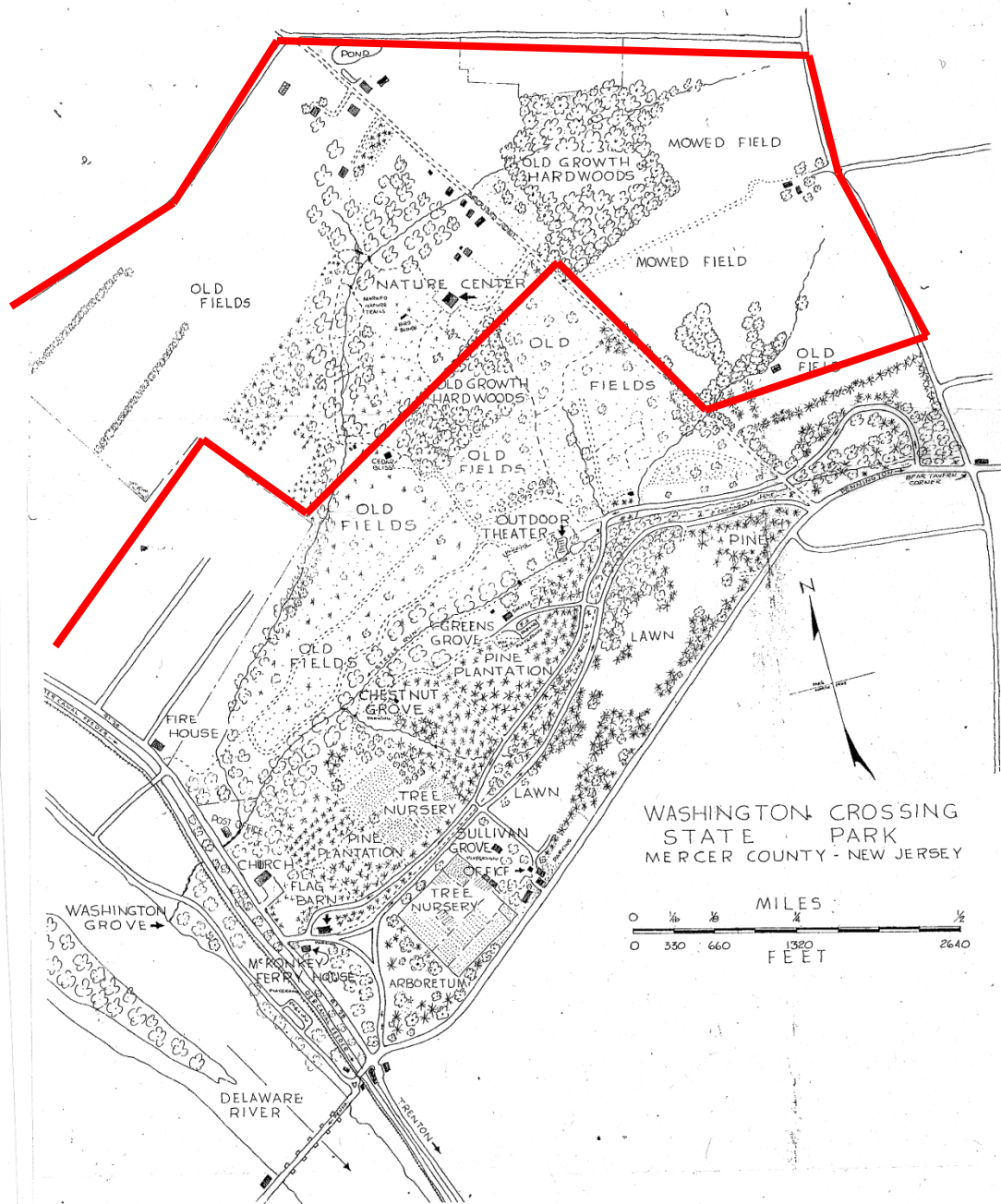
Dirk Van dommelen

Washington Crossing Association of New Jersey

P. O. Box 1776, Titusville, N. J. 08560



*Non-Profit Organization
Dedicated to:
Historic Preservation
Cultural Development
Environmental Protection of
Washington Crossing State Park
of New Jersey*



Green Acres
1960s – 1970s

Open Air theater





The Nature Center

Designation as
National Historic
Landmark



Trenton kennel Club Show





The Visitor Center



The
Pedestrian
Crossing



Knox
Grove



Closing of Multiple Accesses
New Main Entranceway to The park

Enhancing the Visitor's Experience

The Modern Park
1977-2012



WEAPONS OF WARFARE: 1775-1783

PATH TO INDEPENDENCE

DECLARATION OF INDEPENDENCE: 1776

The Swan collection



The Nature Center



Observatory



New Jersey History Fair





Park Partnerships

The Annual Reenactment of The Crossing





Washington Crossing state Park
A Legacy of Public Service
1912-2012



The Park Today
(Original – Outlined in Red)
(Current – Shaded Green)

A photograph of a dirt path winding through a forest. The path is made of brown earth and is flanked by tall, thin trees with light-colored bark. Sunlight filters through the canopy, creating dappled shadows on the path and the surrounding green undergrowth. The overall scene is peaceful and natural.

Thank You Hopewell Valley Historical Society
For Your support



The Newest Assets in The park