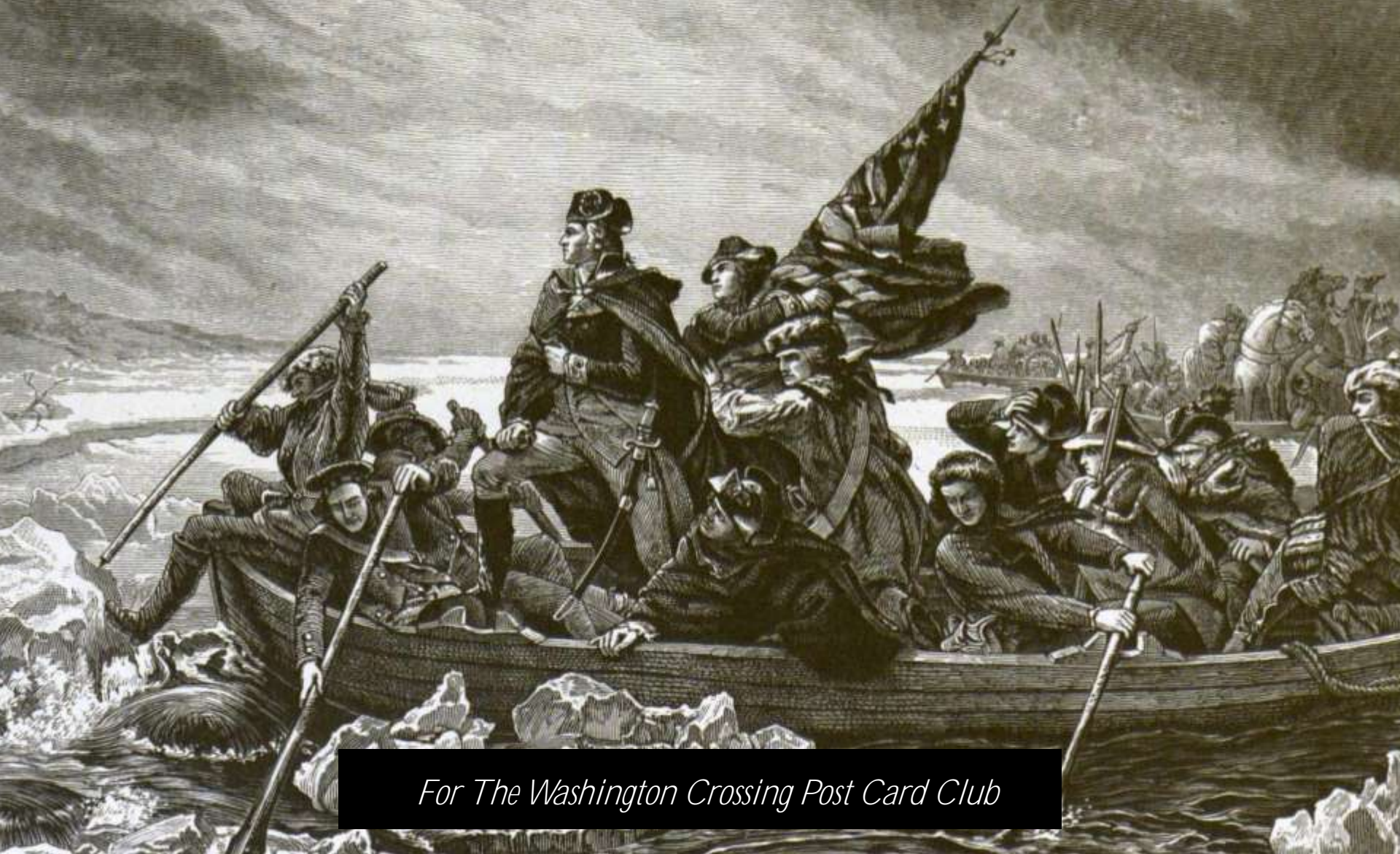


Where Washington Once Led

A HISTORY OF NEW JERSEY'S WASHINGTON CROSSING STATE PARK



For The Washington Crossing Post Card Club

The Crossing

December 25-26, 1776

The Crossing
By
Thomas Sully



The March To Trenton



The Setting

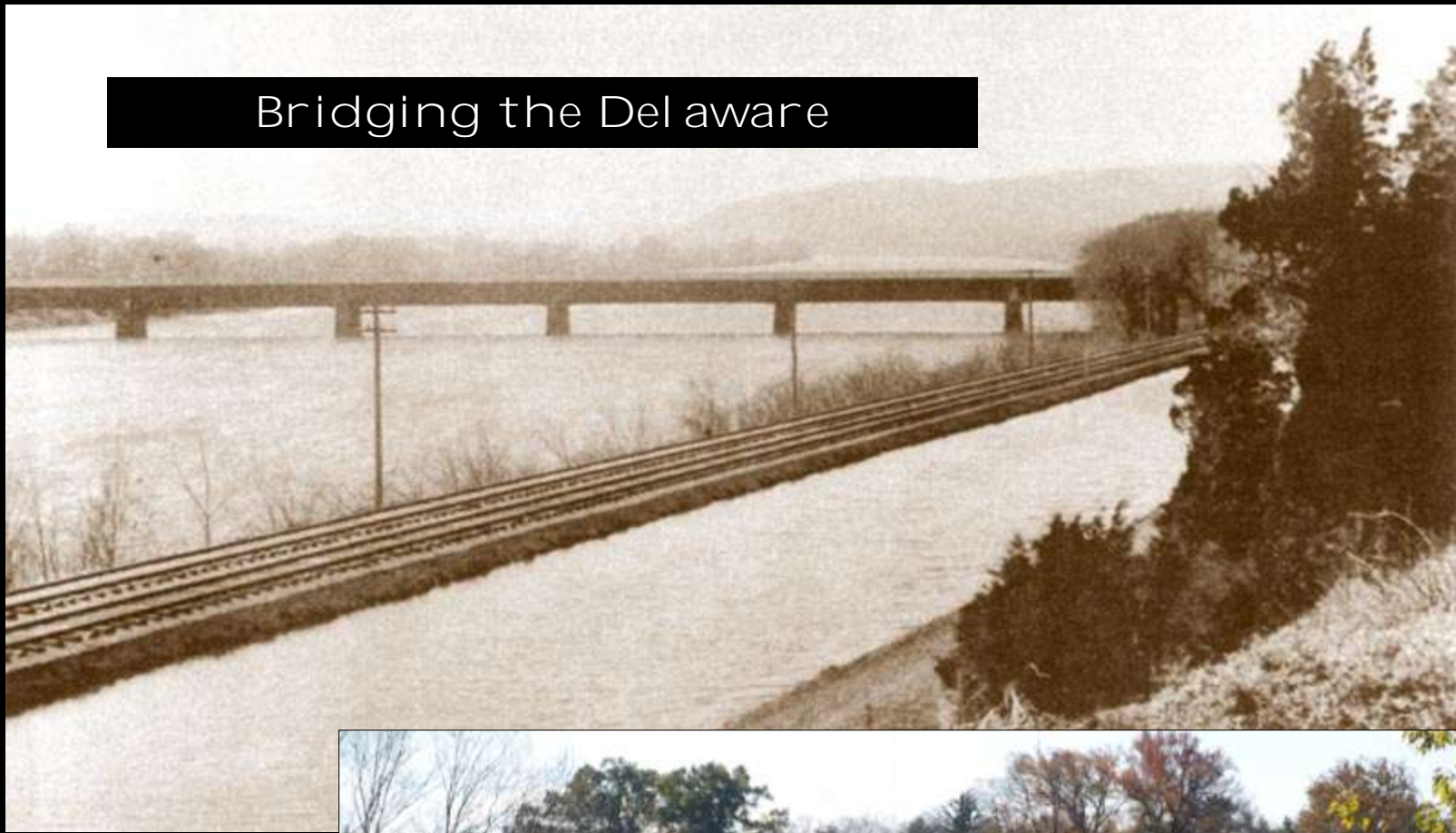
1830-1895

The Ferry on the Delaware River at Masthope, Pike Co., Pa.



Ferries at the Crossing

Bridging the Delaware





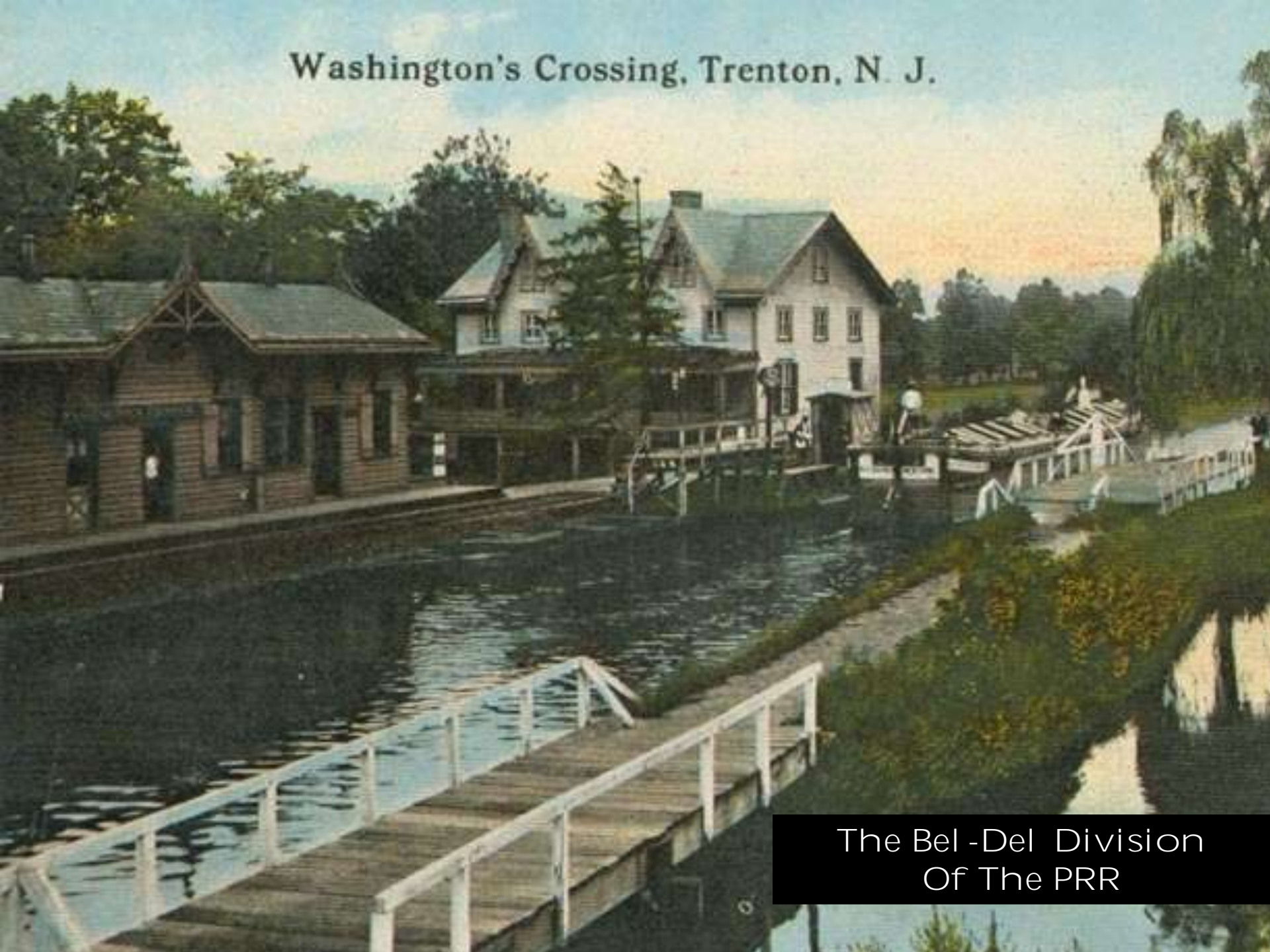
Bridge
Signboard
By
Edward Hicks

WASHINGTON Crossed here
Christmas eve 1776. aided by Genl.
Sullivan, Greene, Lord, Sterling, Mercer & St. Clair.



The D & R Canal

Washington's Crossing, Trenton, N. J.



The Bel-Del Division
Of The PRR

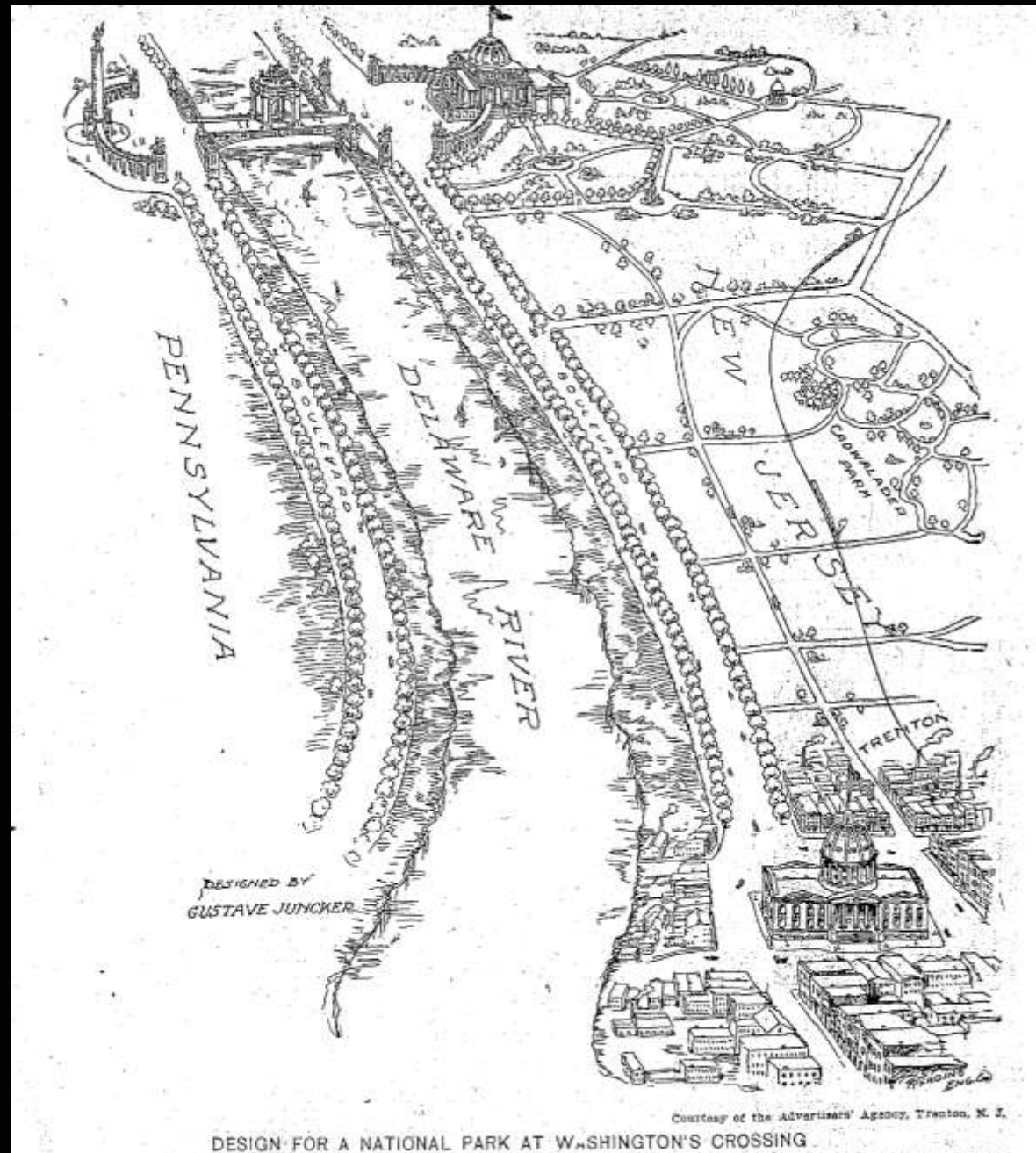
Calls For A Park 1895-1909



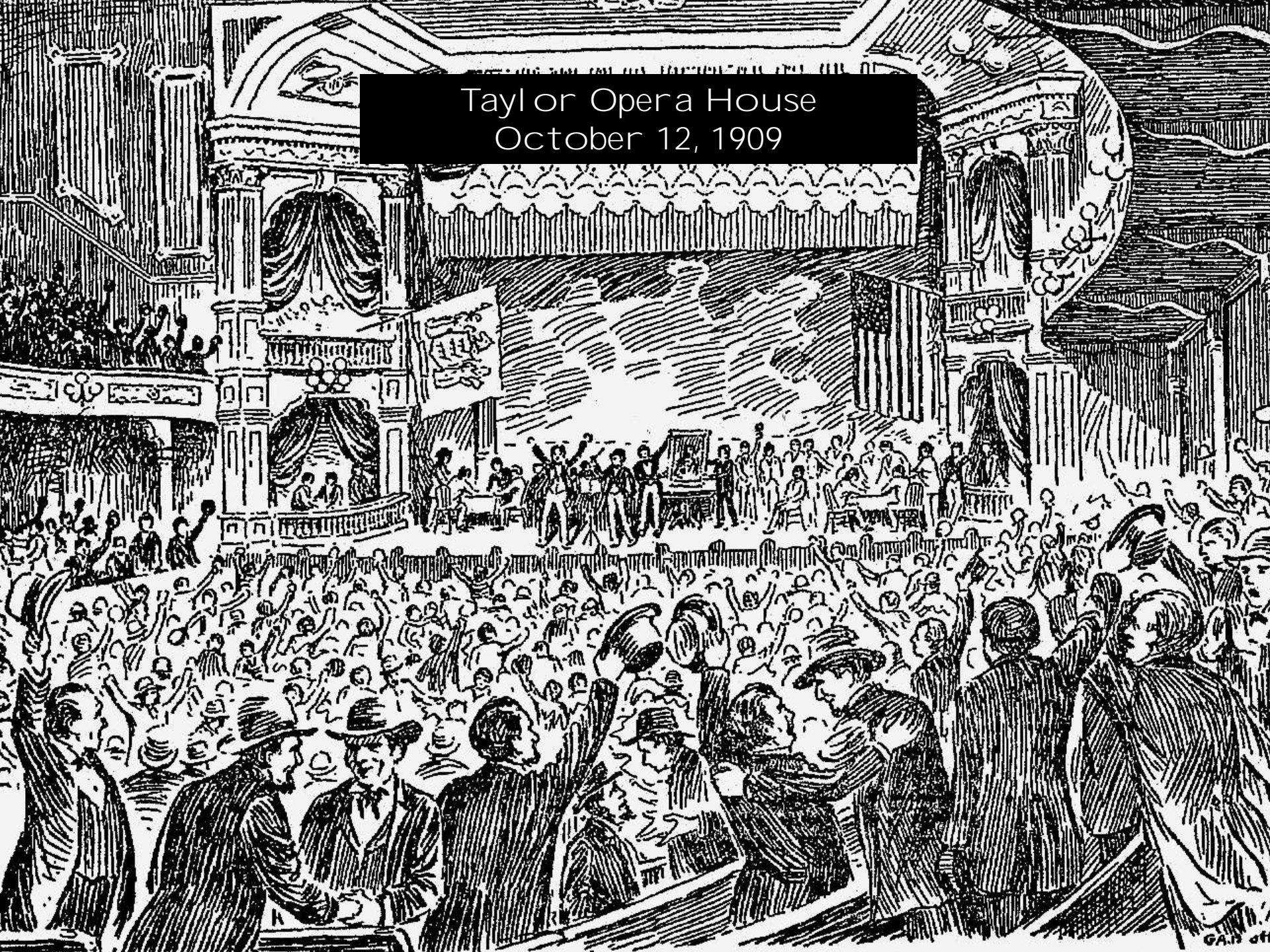
The Society of the
Cincinnati
And
Bucks County
Historical society
Memorials
Erected 1895

Calls For
National Park
And
Memorial
Bridge

The
Juncker Plan

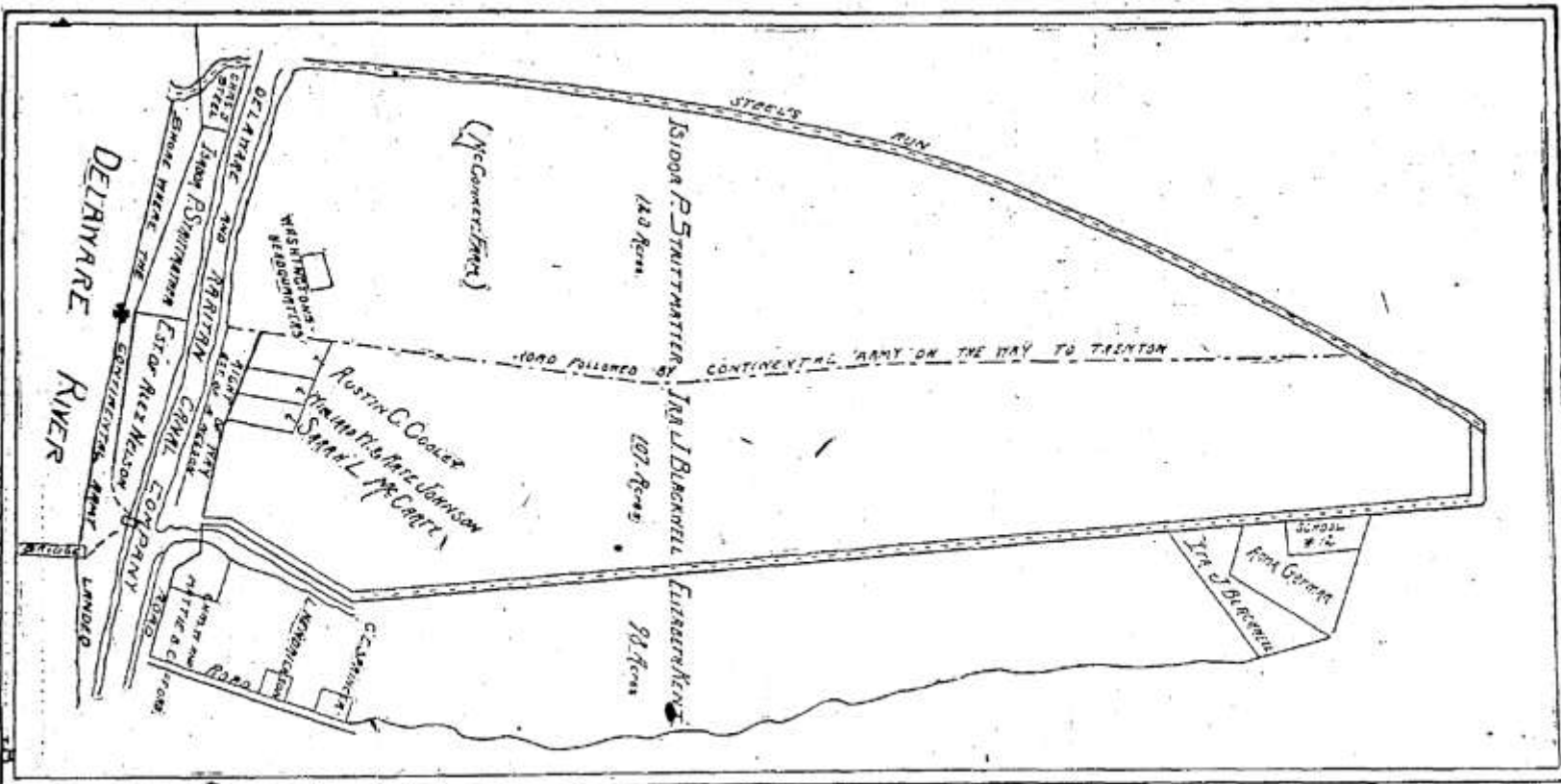


Taylor Opera House
October 12, 1909



THE PARK'S CREATION
1909-1930

SITE OF WASHINGTON'S CROSSING PARK



BIRTHDAY
BULLETIN

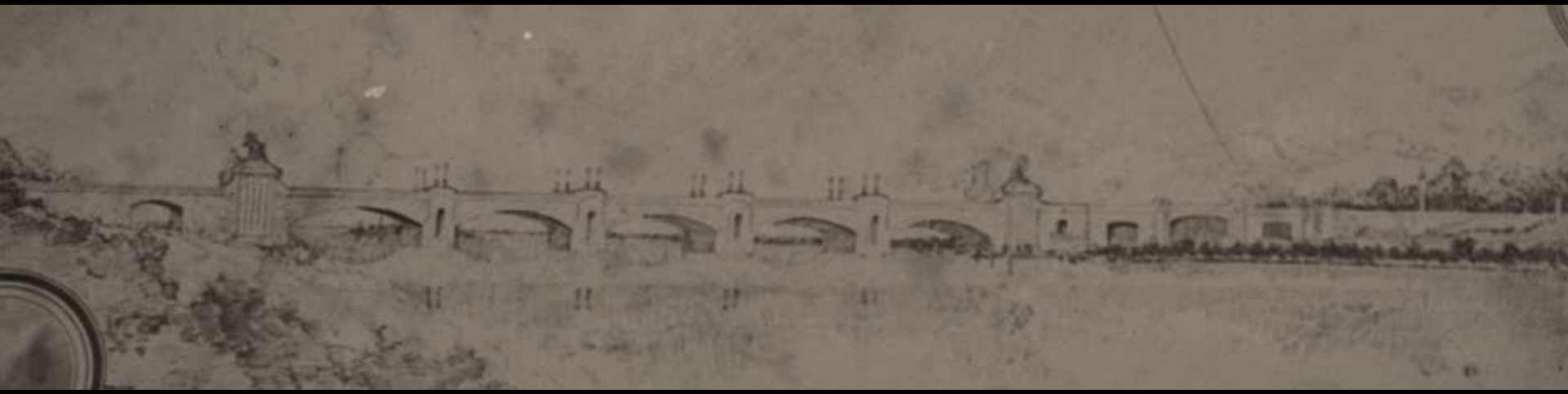


—Photo by Gilbert & Bacon.

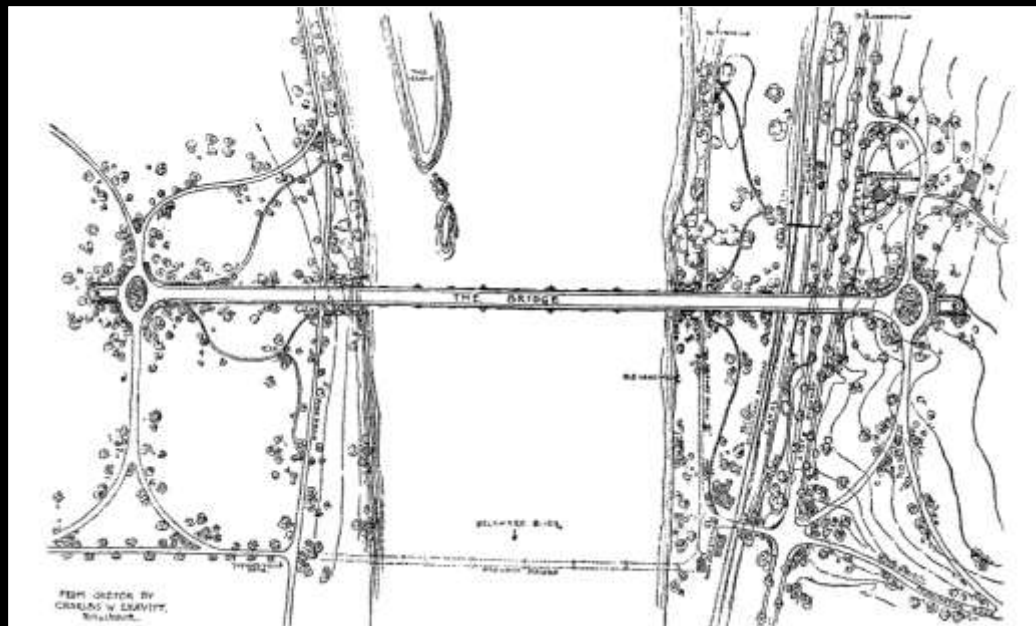
DR. I. P. STRITTMATTER

The Inquirer extends greetings to a widely-known physician.





George Washington Memorial Bridge



The Fiske Landscape Plan 1925



THE "TEN ACRE PLAN"





The Ferry House Renovations 1924





Rerouting of Parts of Continental Lane



Sesquicentennial of the Declaration of independence
1926

State Forest Nursery
1925



A photograph of a forest path, likely a plantation, with a text overlay. The path is a dirt road that winds through a dense forest of tall, thin trees. The trees are mostly evergreens, and their shadows are cast across the path. The ground is covered with green grass and small plants. The text overlay is a black rectangle with white text that reads "Forest Plantations" and "1925".

Forest Plantations
1925



State Forest Nursery Building
1930

New Jersey
Sons of the Revolution
Flag Pole
Erected 1927



An aerial black and white photograph of a park area. In the foreground, there is a large, open, somewhat irregularly shaped field. To the right of this field is a baseball field with a visible diamond. The park is bordered by a road on the right and a river on the far right. In the background, there are several houses and buildings on a hillside, and a road or railway line runs along the slope. A dark rectangular box is overlaid on the upper left portion of the image, containing white text.

PARK'S OFFICIAL DEDICATION
1927



The DAR
Memorial
Erected 1928



The Honeyman Memorial
Erected
1930



George Washington Bicentennial
Arbor Day 1932



American Tree Association
Memorial

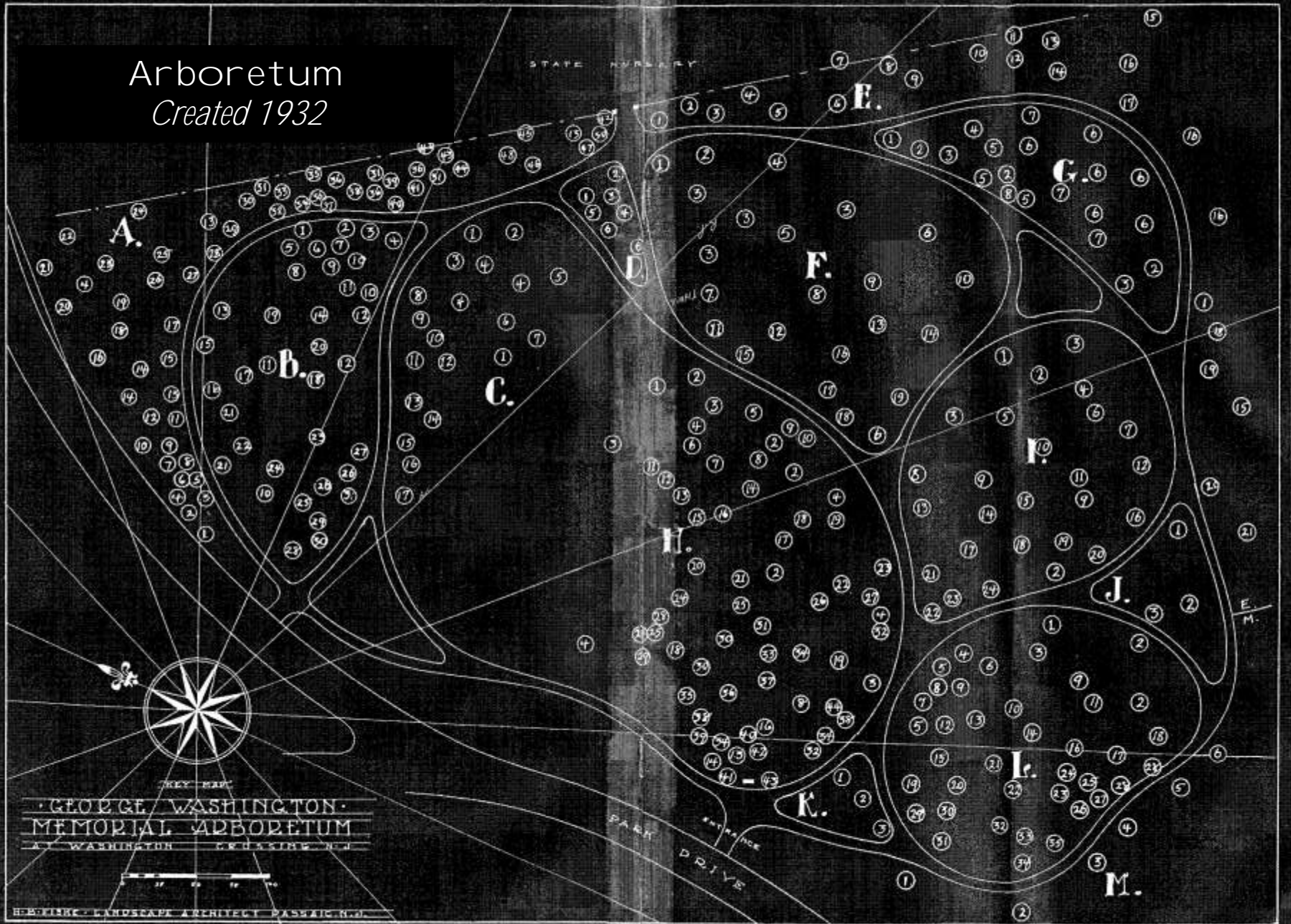


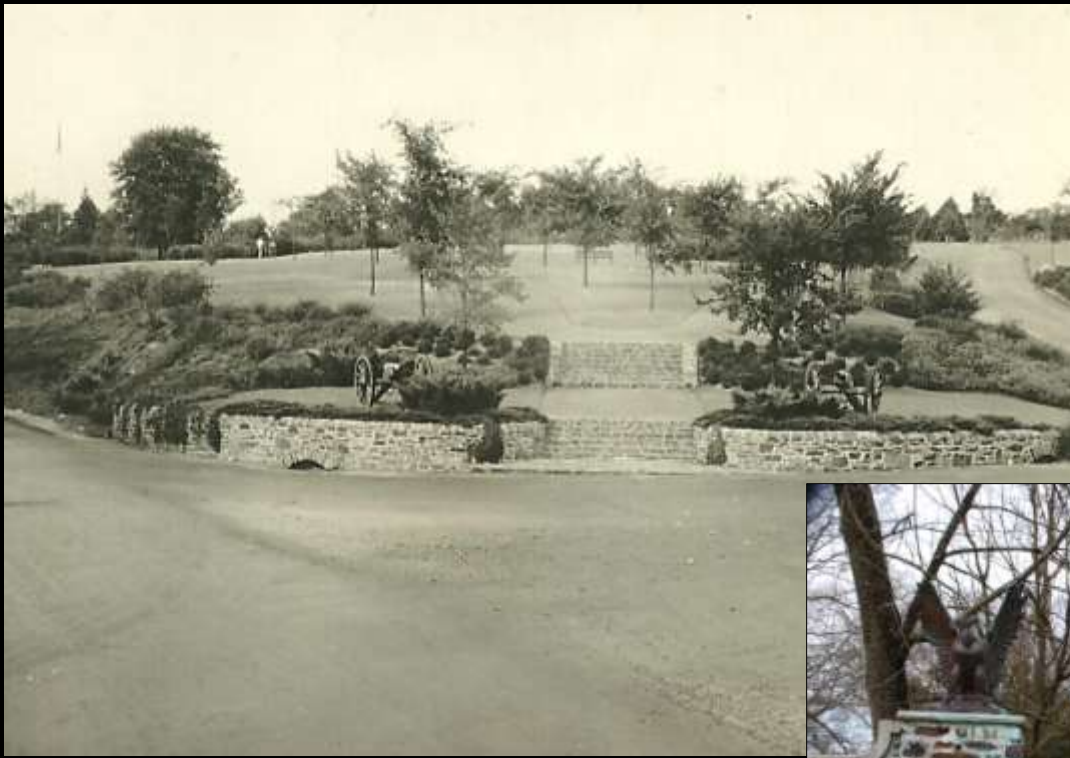


Sullivan Drive Plantings 1932



Arboretum
Created 1932





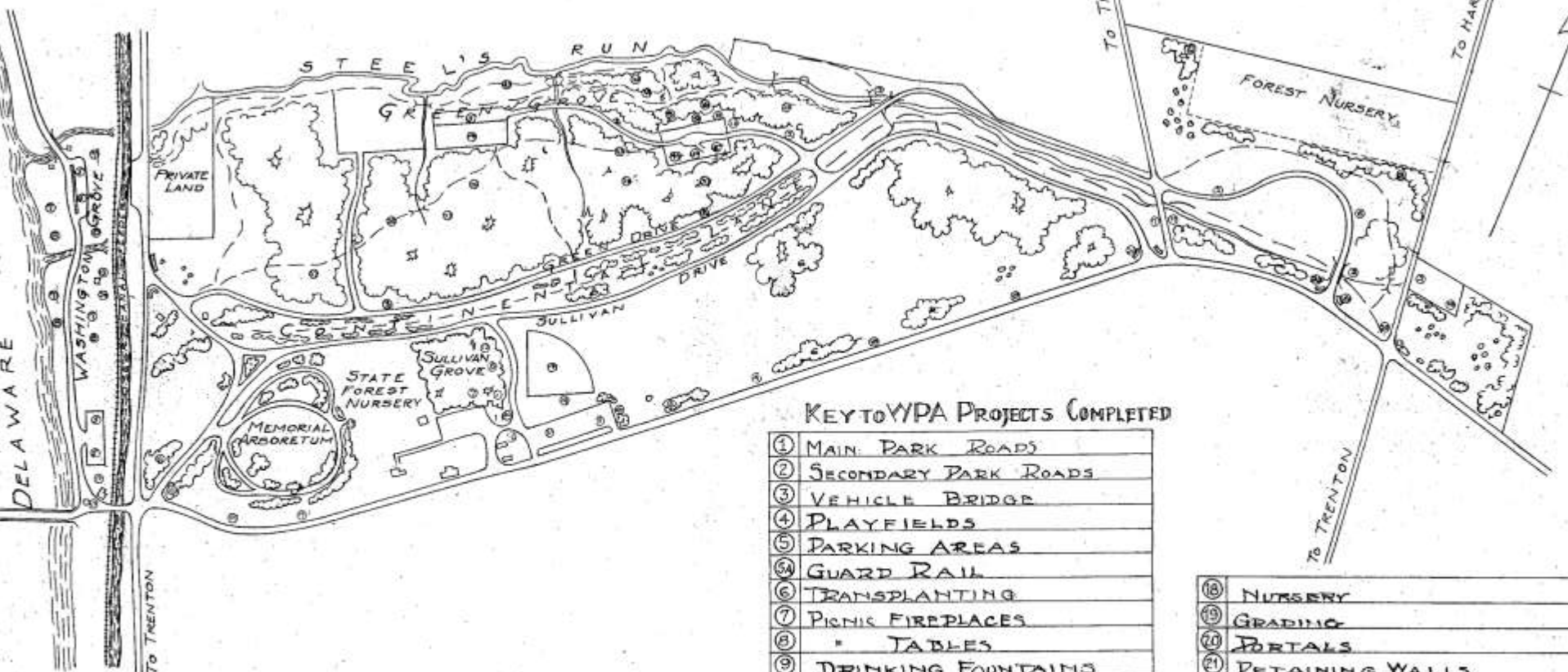
Bicentennial of George Washington's Birth
Colonial Gateway & Main Entrance

Colonial Dames Memorial
Erected 1932



Society of Colonial Wars
in the State of New Jersey
Erected 1932

The Depression
years
1930-1942

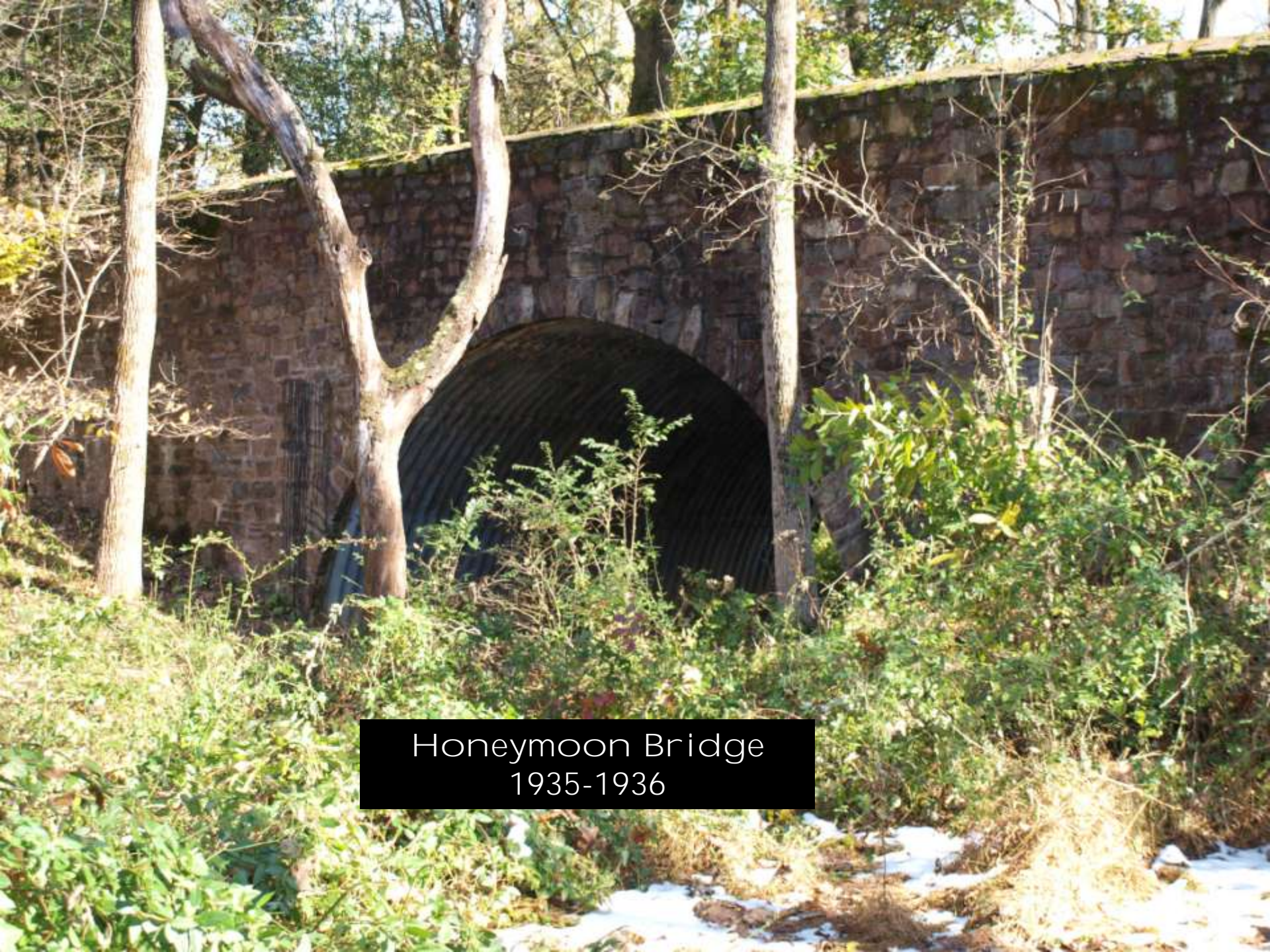


The Works Progress
Administration
1935-1941

KEY TO YPA PROJECTS COMPLETED

①	MAIN PARK ROADS
②	SECONDARY PARK ROADS
③	VEHICLE BRIDGE
④	PLAYFIELDS
⑤	PARKING AREAS
⑥	GUARD RAIL
⑦	TRANSPLANTING
⑧	PICNIC FIREPLACES
⑨	" TABLES
⑩	DRINKING FOUNTAINS
⑪	RUMP HOUSE
⑫	WATER SUPPLY LINE
⑬	SHELTER REMODELLED
⑭	LATRINES "
⑮	DAM
⑯	ADMINISTRATION BUILDING
⑰	EQUIPMENT BUILDING
⑱	RUBBLE GUTTERS

⑲	NURSERY
⑳	GRADING
㉑	PORTALS
㉒	RETAINING WALLS
㉓	DEMOLITION
㉔	FOOT TRAILS
㉕	GRAVEL WALKS
㉖	WOODS IMPROVEMENT
㉗	PRUNING PLANTATIONS
㉘	GRUBBING "
㉙	STREAM IMPROVEMENT



Honeymoon Bridge
1935-1936



Stone Arch Bridge
1935-1936

Greene Drive
1935-1936



Sullivan Grove
Pavilion
WPA - 1935-1936

IMPROVED BY
WORKS PROGRESS
ADMINISTRATION
1935 - 1936

Green Grove Pavilion
1940





Green Grove Water Systems



Chestnut Grove Picnic area
hiking trails, and footbridges
AND ENTRANCE AT ST. GEORGE'S





STEELE'S RUN IMPROVEMENTS





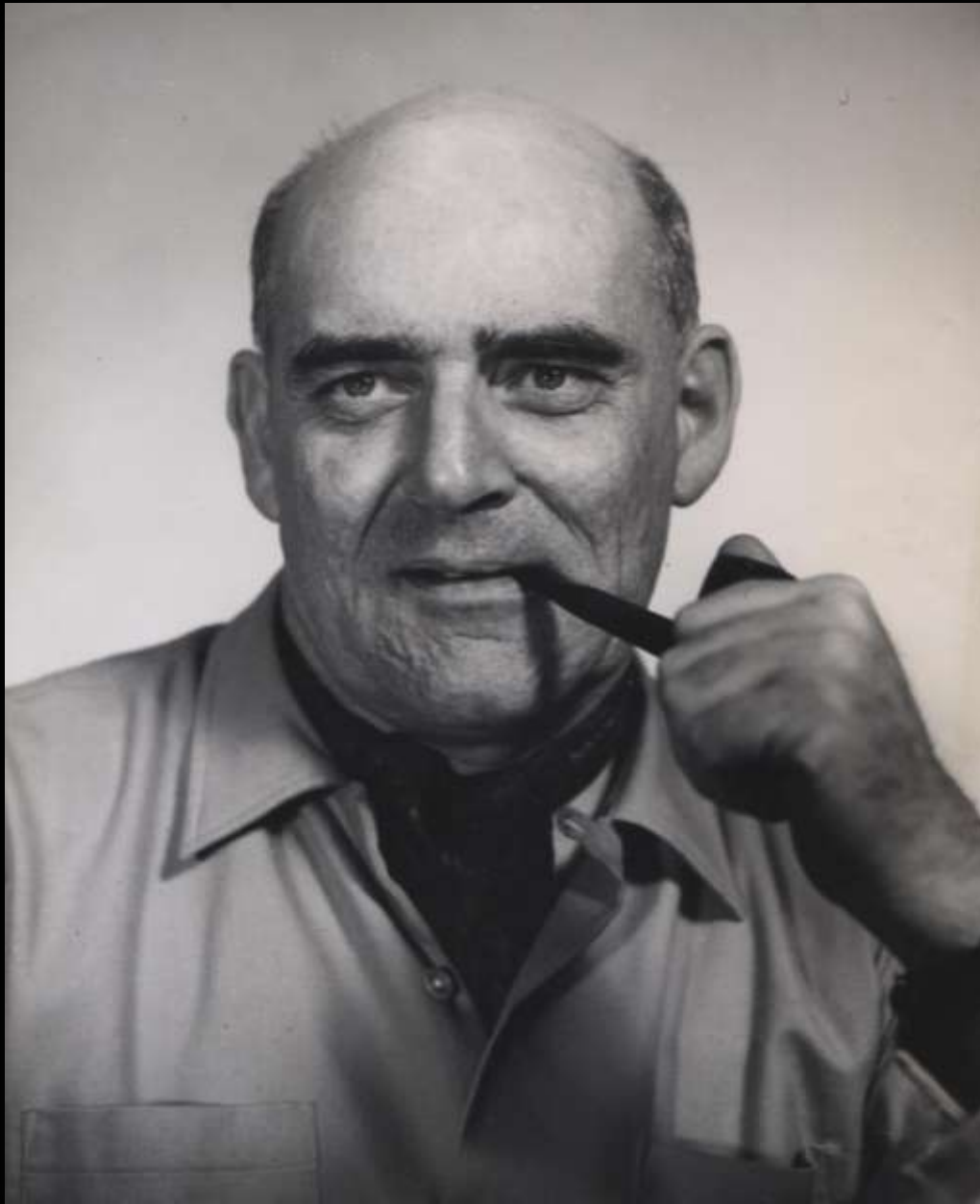
Gates,
Administration Building
Equipment Building



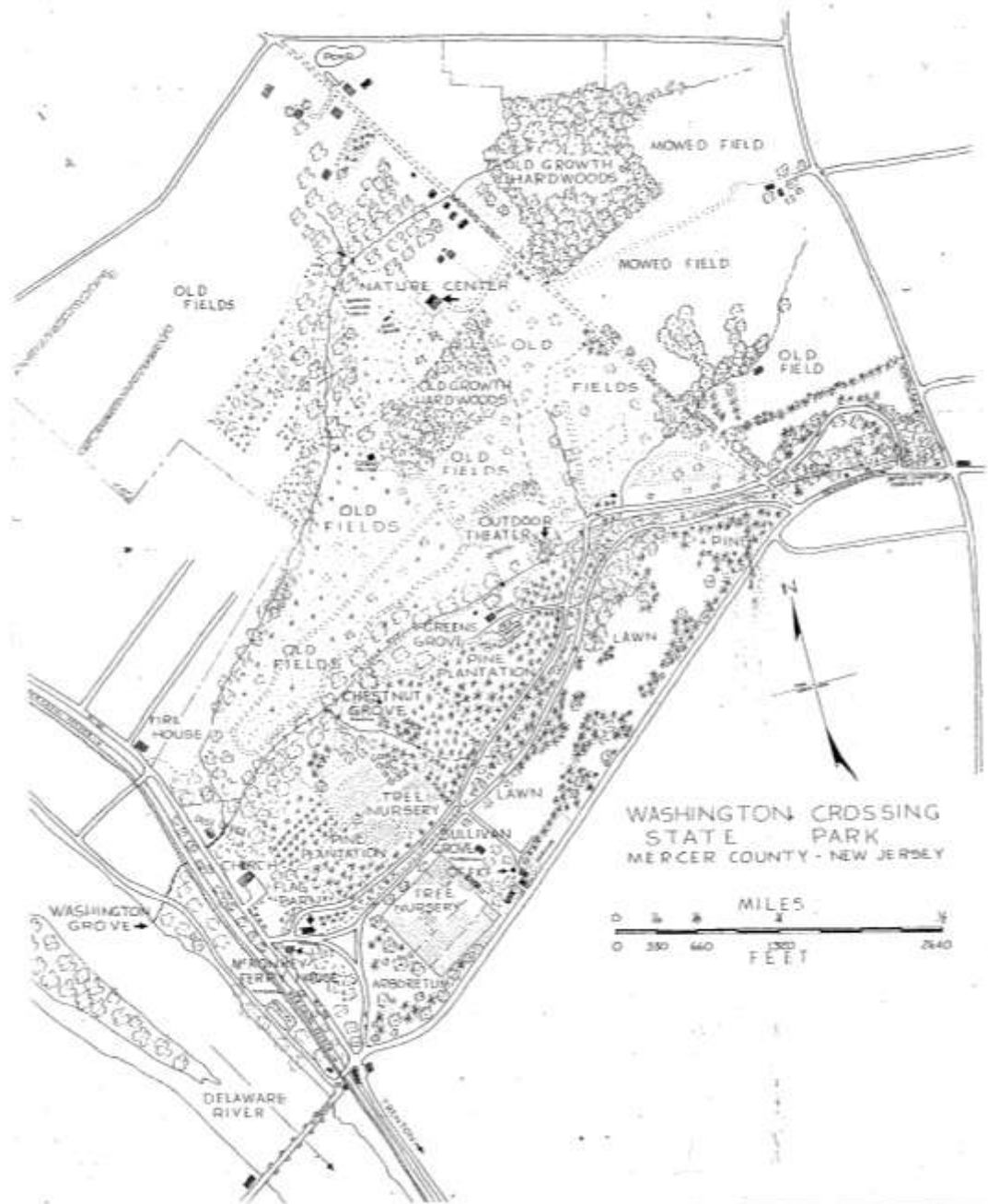
The Quiet Years

1941-1959

The Bicentennial
and
Van Dommelen era
1959-1978



Dirk Van dommel en



Green Acres
1960s

Outdoor Air theater



Trenton kennel Club Show





The Nature Center





Knox Grove



The Visitor Center
And
The Swan Collection



The Pedestrian Crossing



Comfort Stations





Closing of Multiple Accesses
New Main Entranceway to The park

The Modern Park 1980-2012



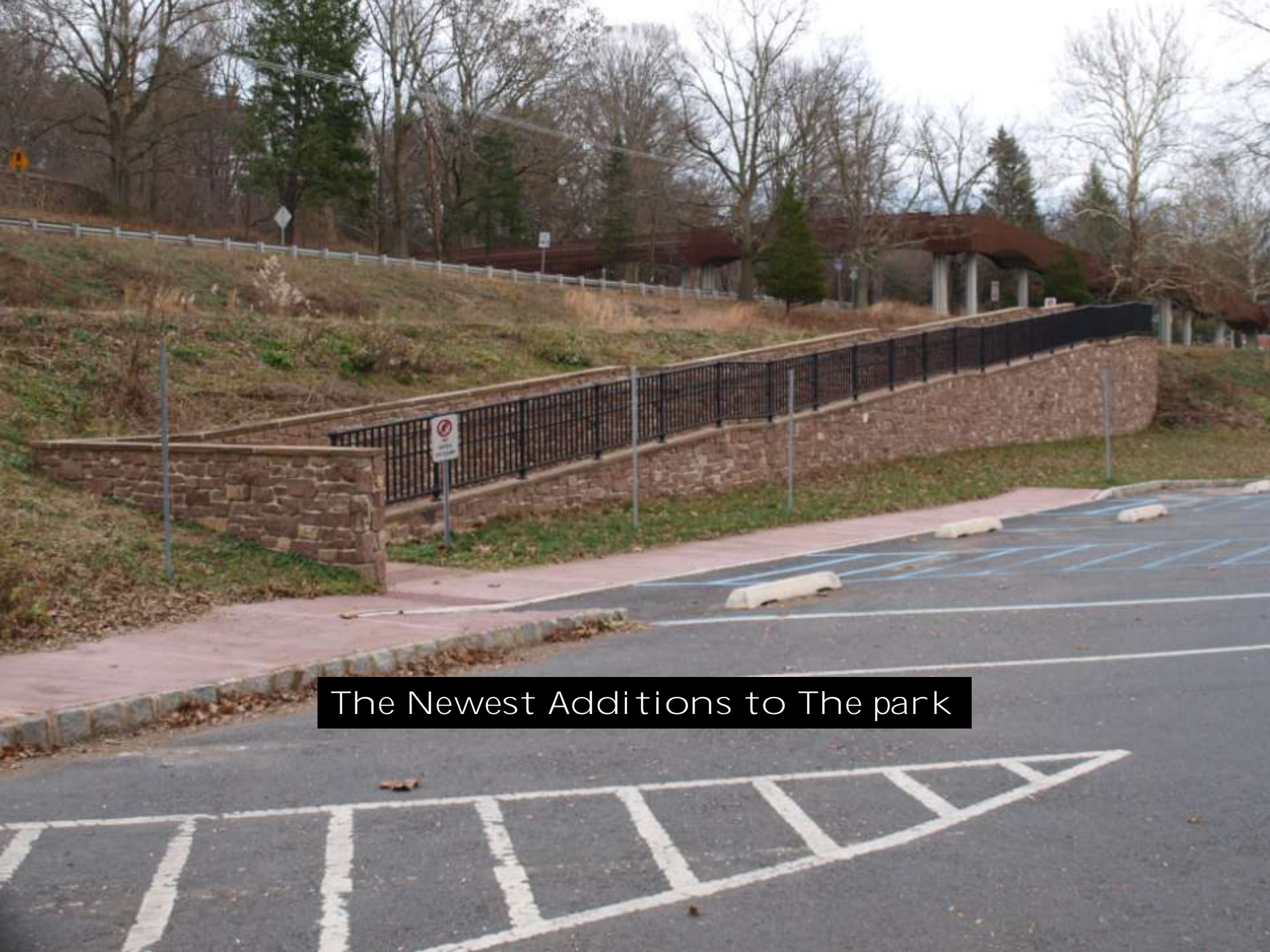
The Park Today



Observatory



Park Partnerships
New Jersey History Fair



The Newest Additions to The park

The Annual Reenactment of The Crossing





Washington Crossing state Park
A Legacy of Public Service
1912-2012



William Farkas
A Man With A Vision For a Book