



# Where Washington Once Led

A HISTORY OF NEW JERSEY'S  
Washington Crossing State Park

# The Crossing 1776





The Crossing  
December 25, 1776



# The March To Trenton



# The Setting

## 1830-1895

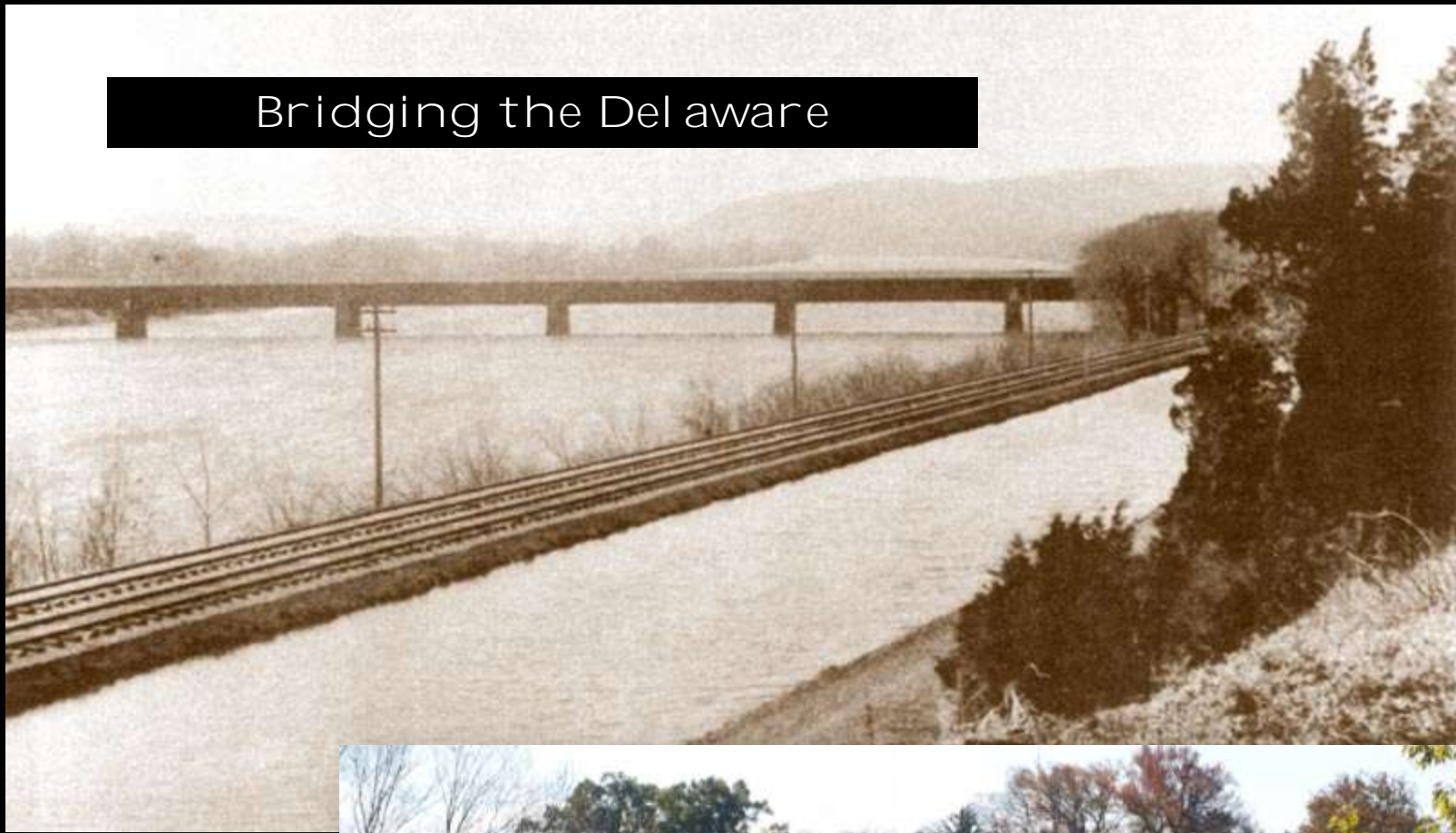


*The Ferry on the Delaware River at Masthope, Pike Co., Pa.*



Ferries at the Crossing

# Bridging the Delaware







WASHINGTON Crossed here  
Christmas eve 1776. aided by Genl.  
*Sullivan, Greene, Lord Sterling, Mercer & St. Clair.*

Bridge  
Signboard

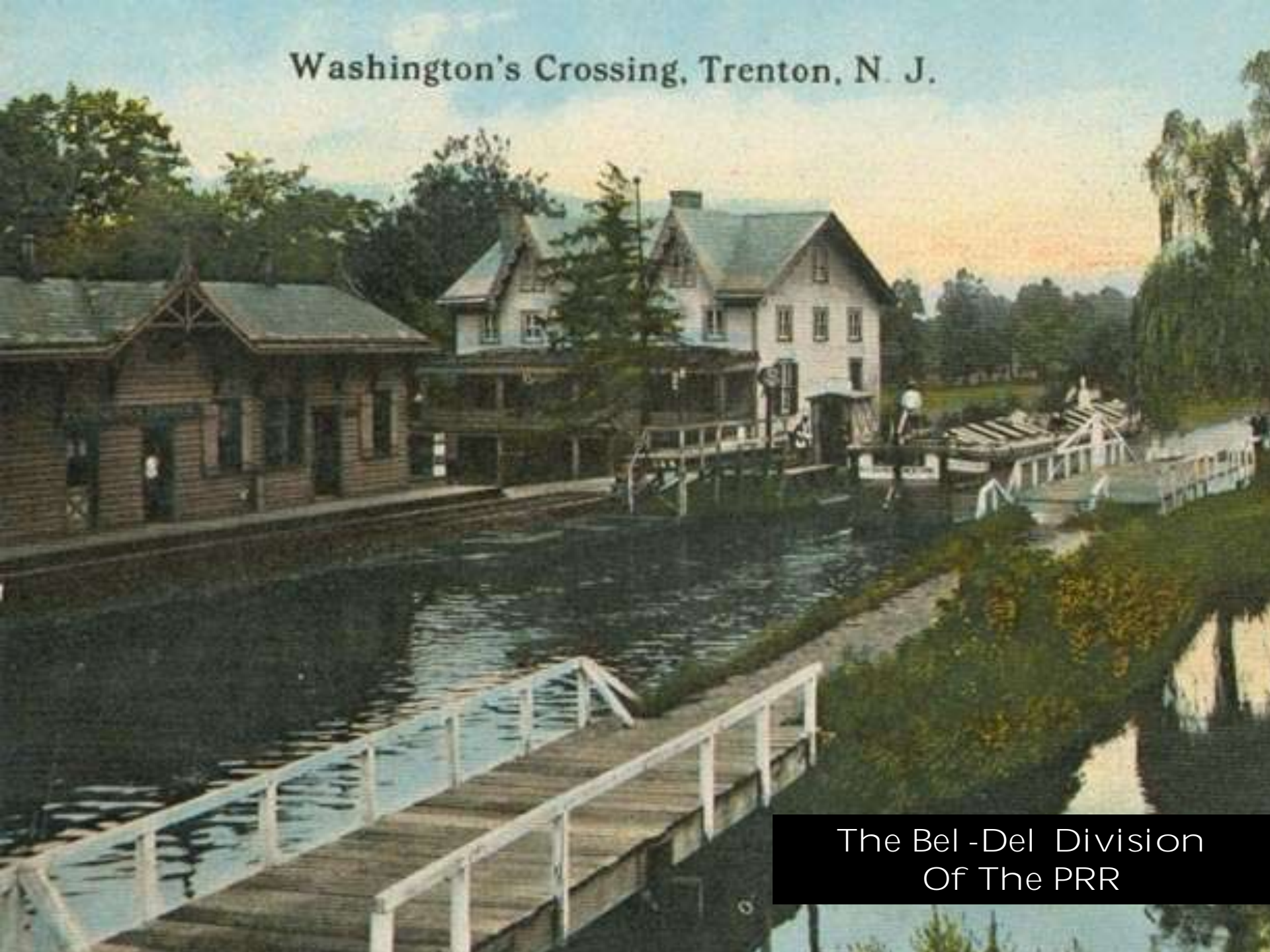
By  
Edward Hicks



The D & R Canal



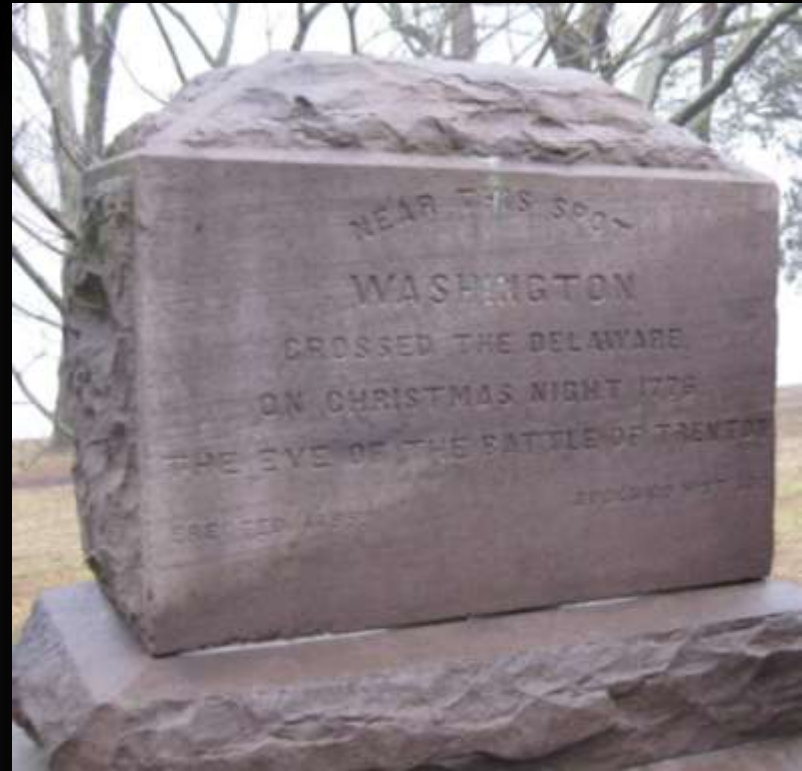
Washington's Crossing, Trenton, N. J.



The Bel-Del Division  
Of The PRR



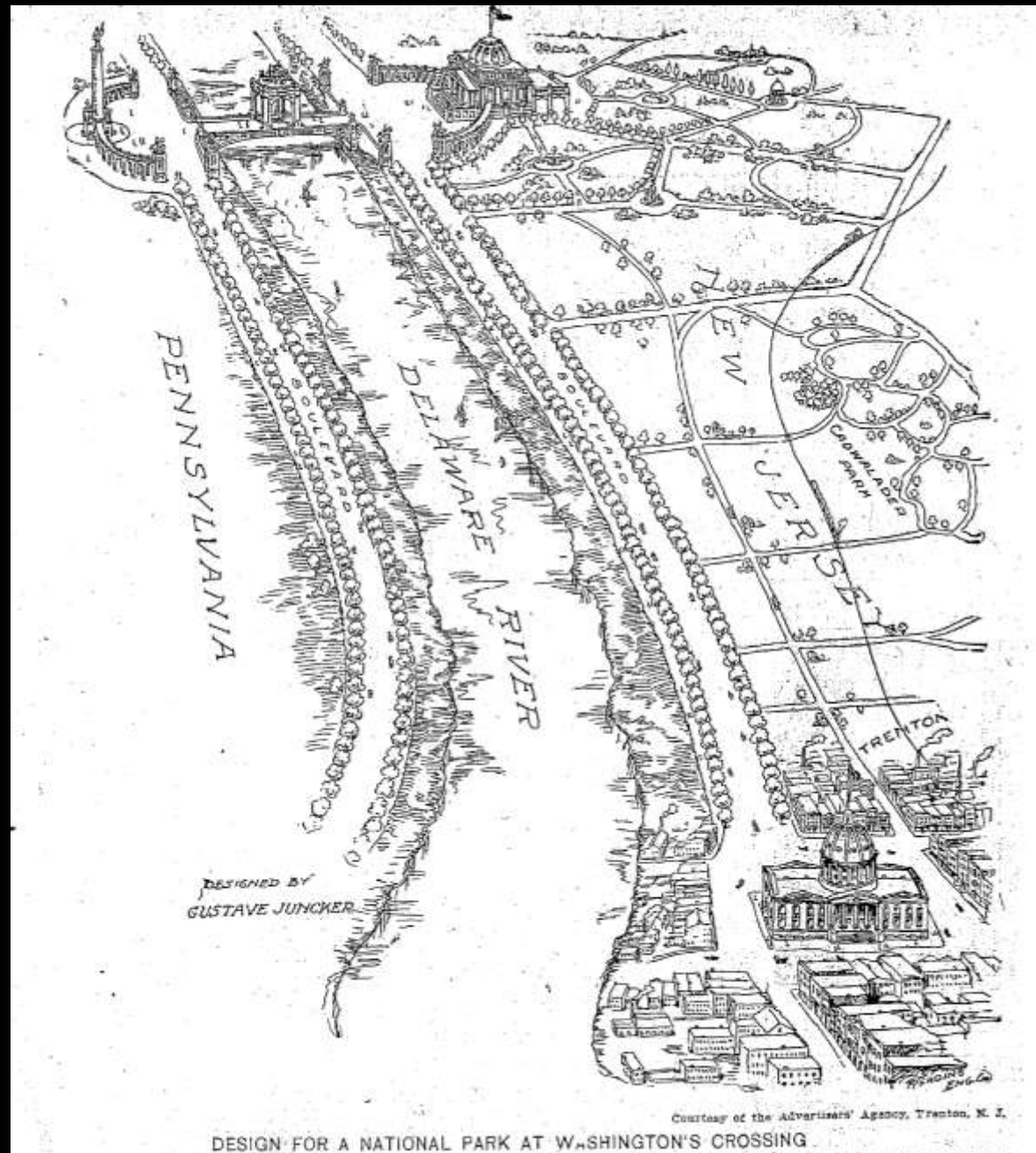
# Calls For A Park 1895-1909



The Society of the  
Cincinnati  
*And*  
Bucks County  
Historical society  
Memorials  
*Erected 1895*

Calls For  
National Park  
And  
Memorial  
Bridge

The  
Juncker Plan

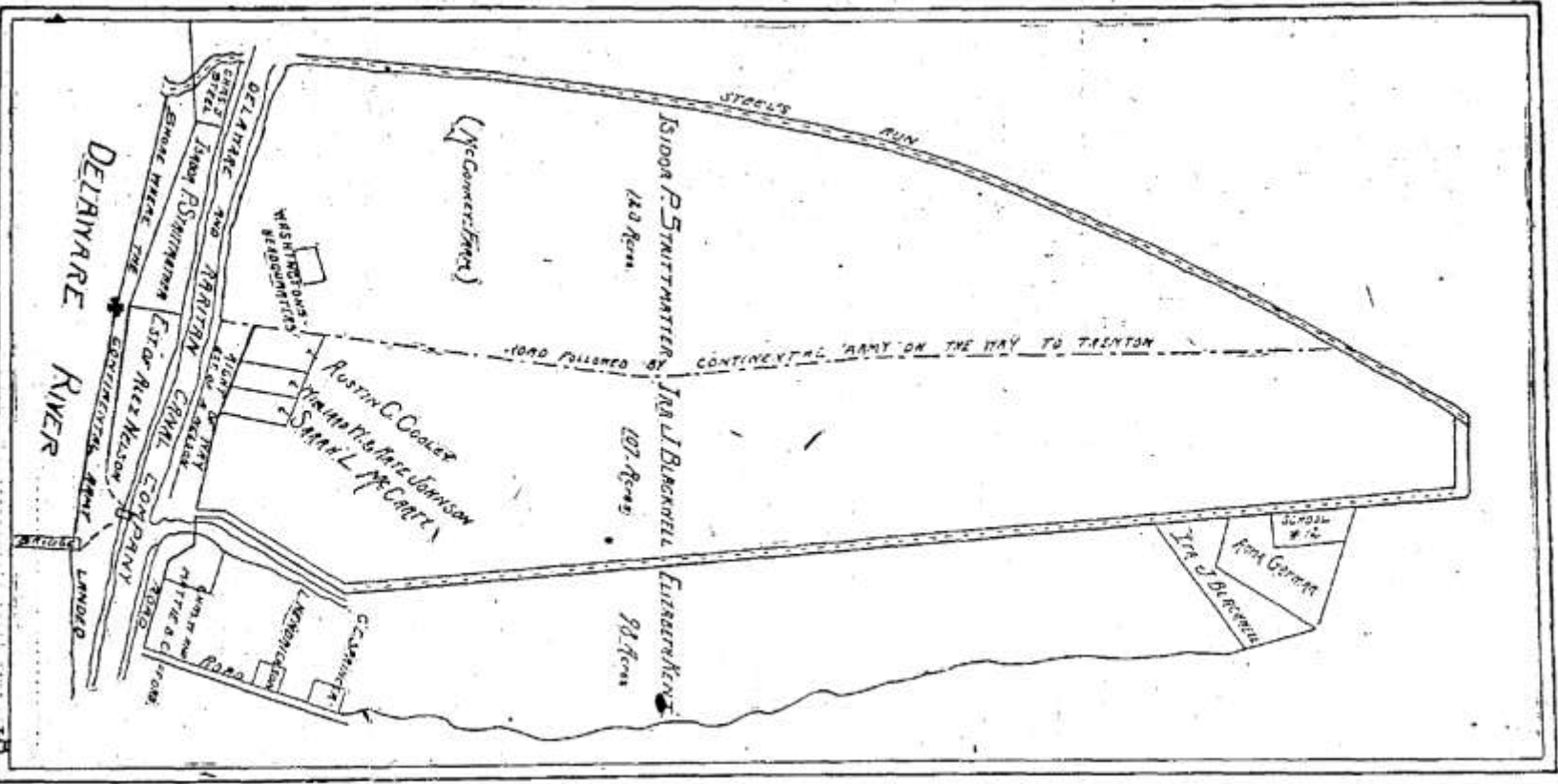




Taylor Opera House  
October 12, 1909



THE PARK'S CREATION  
1909-1930



SITE OF WASHINGTON'S CROSSING PARK



BIRTHDAY  
BULLETIN

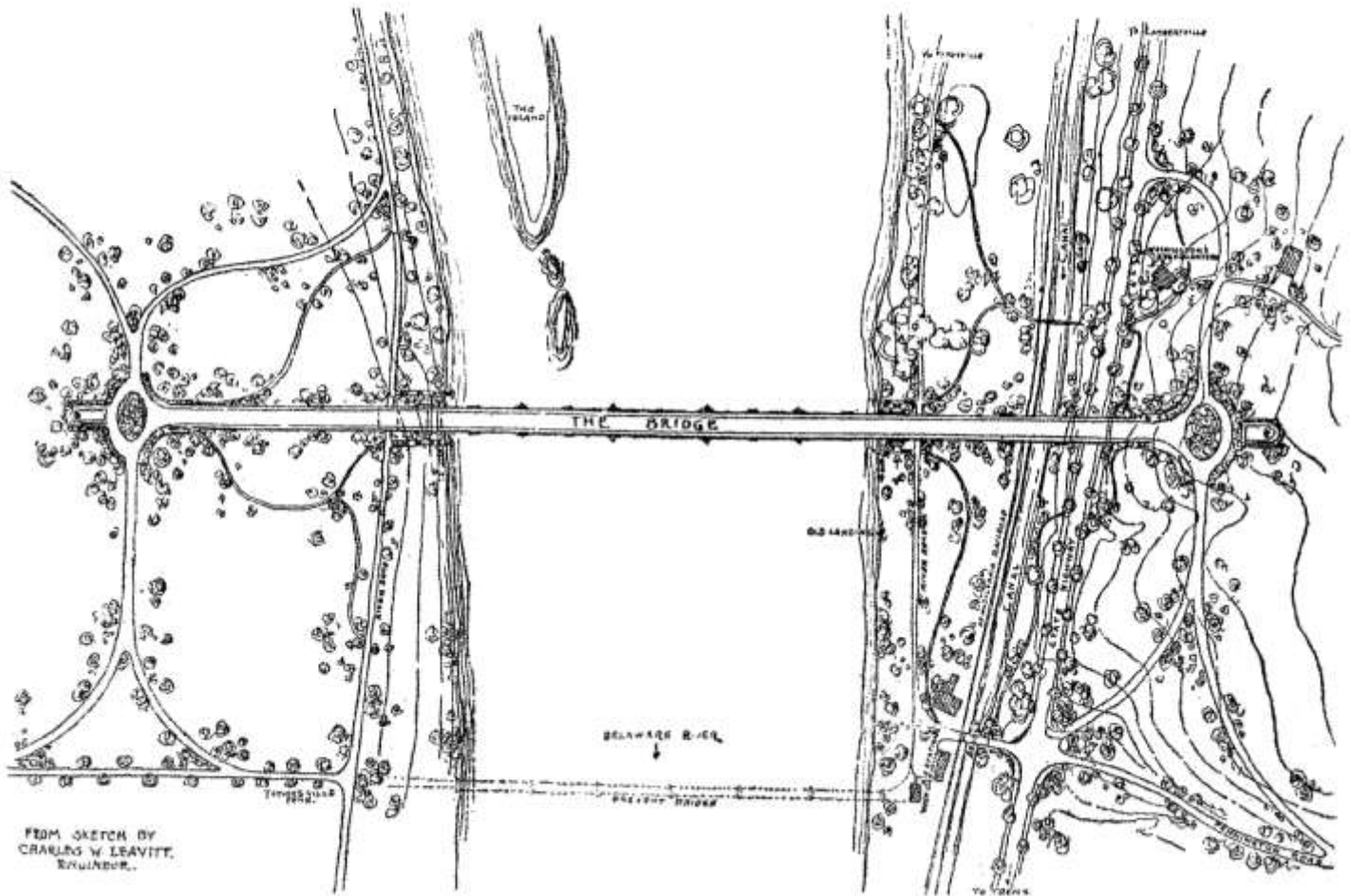


—Photo by Gilbert & Bacon.

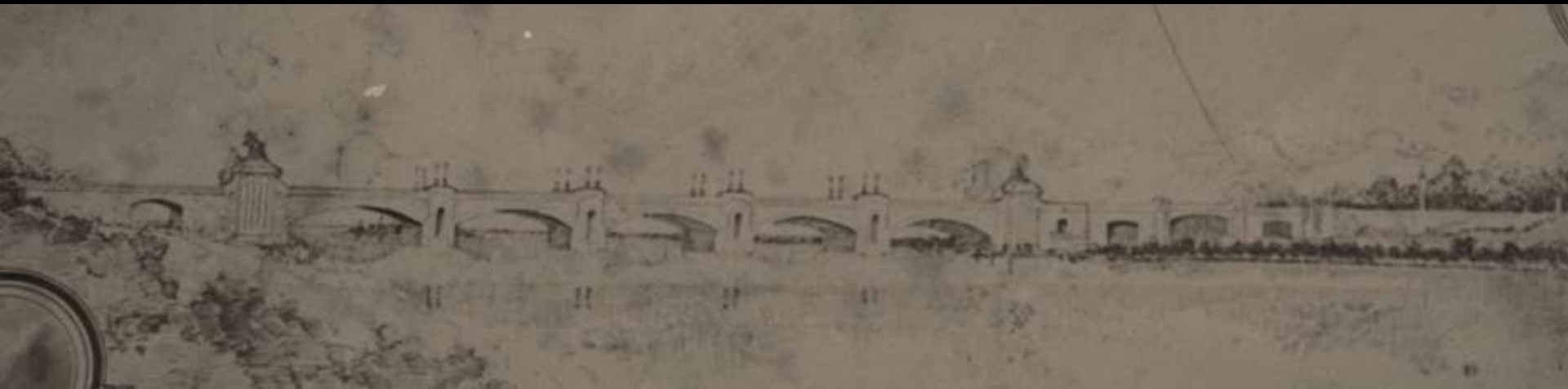
**DR. I. P. STRITTMATTER**

The Inquirer extends greetings to a widely-known physician.





FROM SKETCH BY  
CRAIG V. LEAVITT,  
ENGINEER.



The  
George Washington  
Memorial Bridge



# THE "TEN ACRE PLAN"





The  
Ferry House Renovations  
1924





Rerouting of Parts of Continental Lane





Sesquicentennial of the Declaration of independence  
1926

# State Forest Nursery 1925





A photograph of a forest path with a text overlay. The path is a dirt road that winds through a dense forest of tall, thin trees. The trees are mostly evergreens, and their shadows are cast onto the path. The ground is covered with green grass and small plants. The sky is visible through the canopy of the trees. A black rectangular box is overlaid on the top center of the image, containing the text "Forest Plantations 1925" in white.

Forest Plantations  
1925





State Forest Nursery Building  
1930

New Jersey  
Sons of the Revolution  
Flag Pole  
*Erected 1927*





An aerial black and white photograph of a park area. In the foreground, there is a large, open, somewhat irregularly shaped field. To the right of this field is a baseball field with a visible diamond. The park is bordered by a road on the right, which runs parallel to a river. In the background, there are several houses and buildings on a hillside, and a road that curves through the trees. A dark rectangular box is overlaid on the upper left portion of the image, containing white text.

PARK'S OFFICIAL DEDICATION  
1927





# The DAR Memorial

*Erected 1928*

# The Fiske Landscape Plan 1925







## The Honeyman Memorial

*Erected  
1930*





George Washington  
Bicentennial  
Arbor Day 1932



American Tree Association  
Memorial

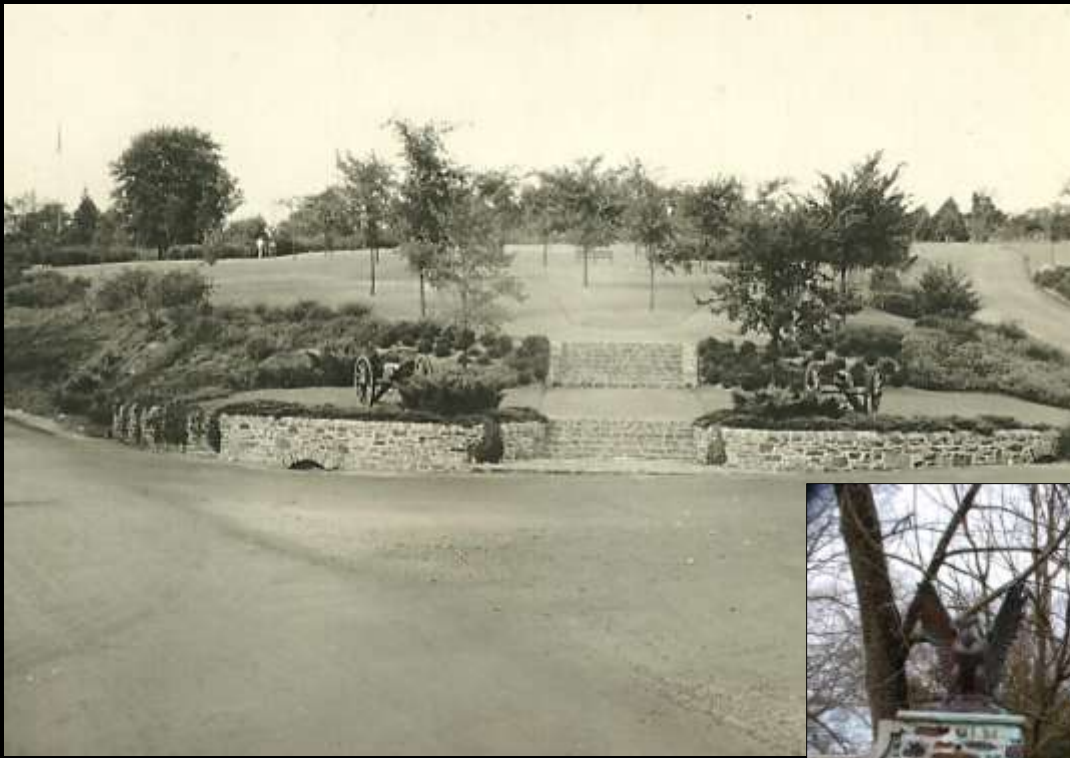




# Sullivan Drive Plantings 1932







Bicentennial of George Washington's Birth  
Colonial Gateway & MaIN Entrance

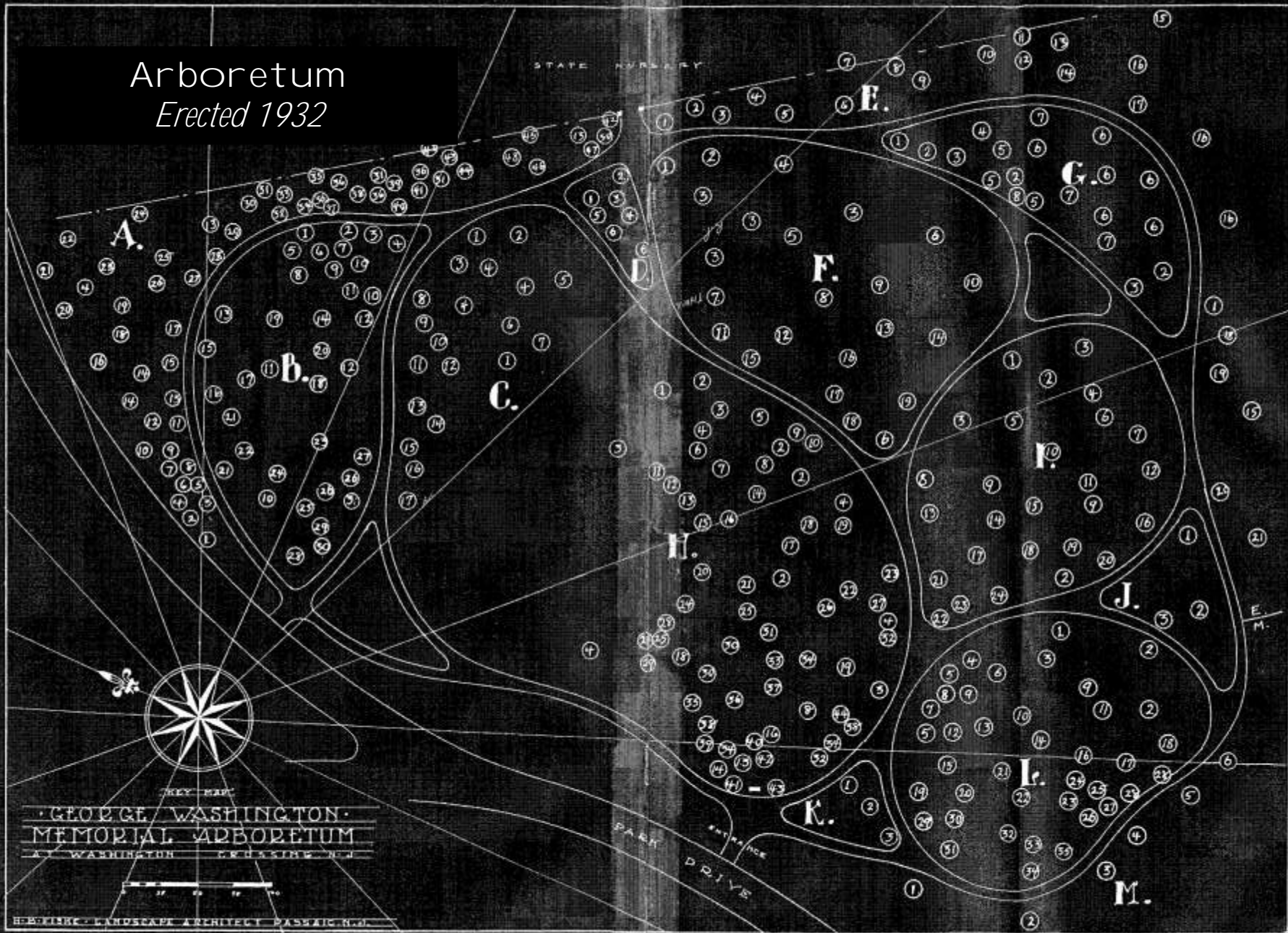


Colonial Dames Memorial  
*Erected 1932*



Society of Colonial Wars  
in the State of New Jersey  
*Erected 1932*

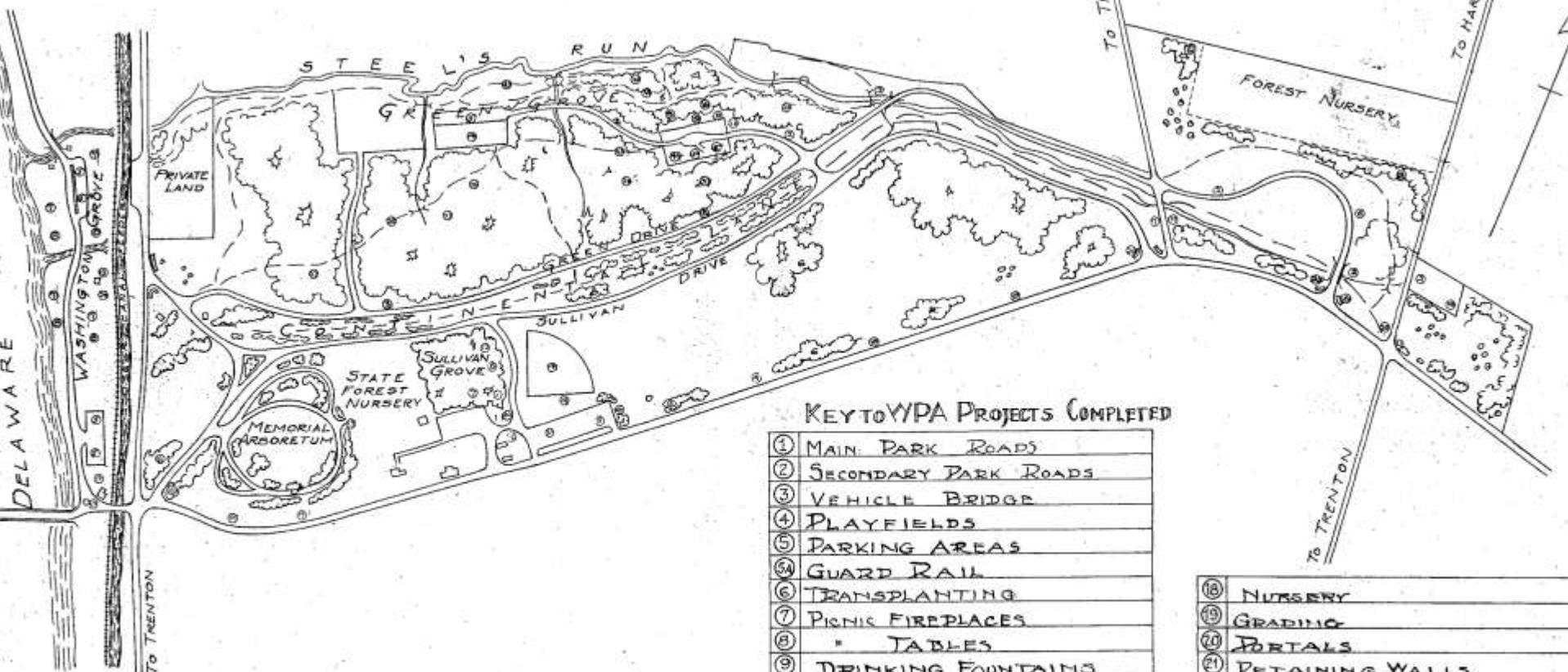
Arboretum  
*Erected 1932*



H.B. FISK - LANDSCAPE ARCHITECT PASAIC N.J.



The Depression  
years  
1930-1942



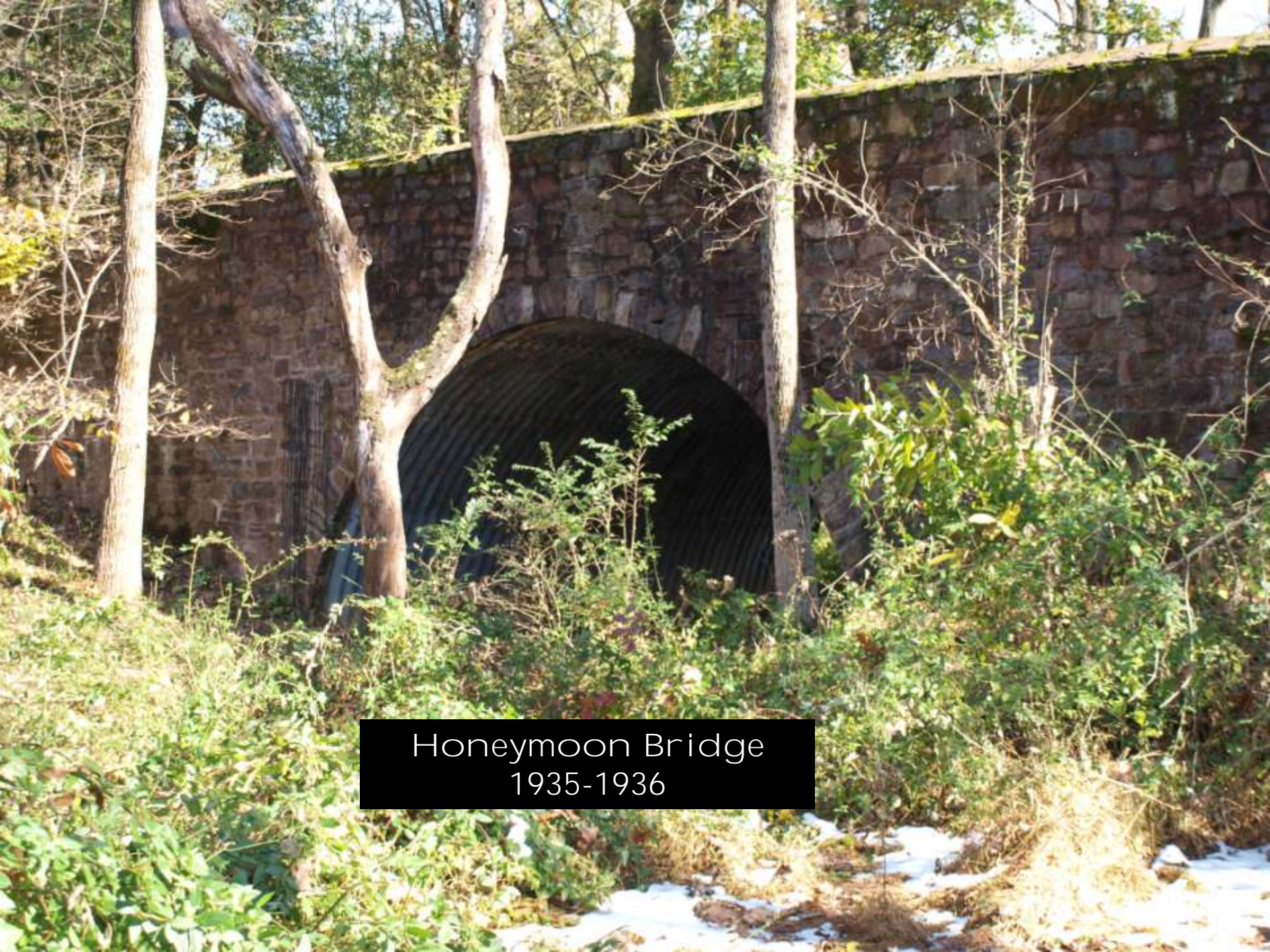
The Works Progress  
Administration  
1935-1941

KEY TO YPA PROJECTS COMPLETED

①	MAIN PARK ROADS
②	SECONDARY PARK ROADS
③	VEHICLE BRIDGE
④	PLAYFIELDS
⑤	PARKING AREAS
⑥	GUARD RAIL
⑦	TRANSPLANTING
⑧	PICNIC FIREPLACES
⑨	" TABLES
⑩	DRINKING FOUNTAINS
⑪	RUMP HOUSE
⑫	WATER SUPPLY LINE
⑬	SHELTER REMODELLED
⑭	LATRINES "
⑮	DAM
⑯	ADMINISTRATION BUILDING
⑰	EQUIPMENT BUILDING
⑱	RUBBLE GUTTERS

⑲	NURSERY
⑳	GRADING
㉑	PORTALS
㉒	RETAINING WALLS
㉓	DEMOLITION
㉔	FOOT TRAILS
㉕	GRAVEL WALKS
㉖	WOODS IMPROVEMENT
㉗	PRUNING PLANTATIONS
㉘	GRUBBING "
㉙	STREAM IMPROVEMENT





Honeymoon Bridge  
1935-1936



Stone Arch Bridge  
1935-1936





Greene Drive  
1935-1936





Sullivan Grove  
Pavilion  
WPA – 1935-1936

IMPROVED BY  
WORKS PROGRESS  
ADMINISTRATION  
1935 - 1936



Green Grove Pavilion  
1940







## Green Grove Waster Systems





Chestnut Grove Picnic area  
hiking trails and footbridges







## STEELE'S RUN IMPROVEMENTS



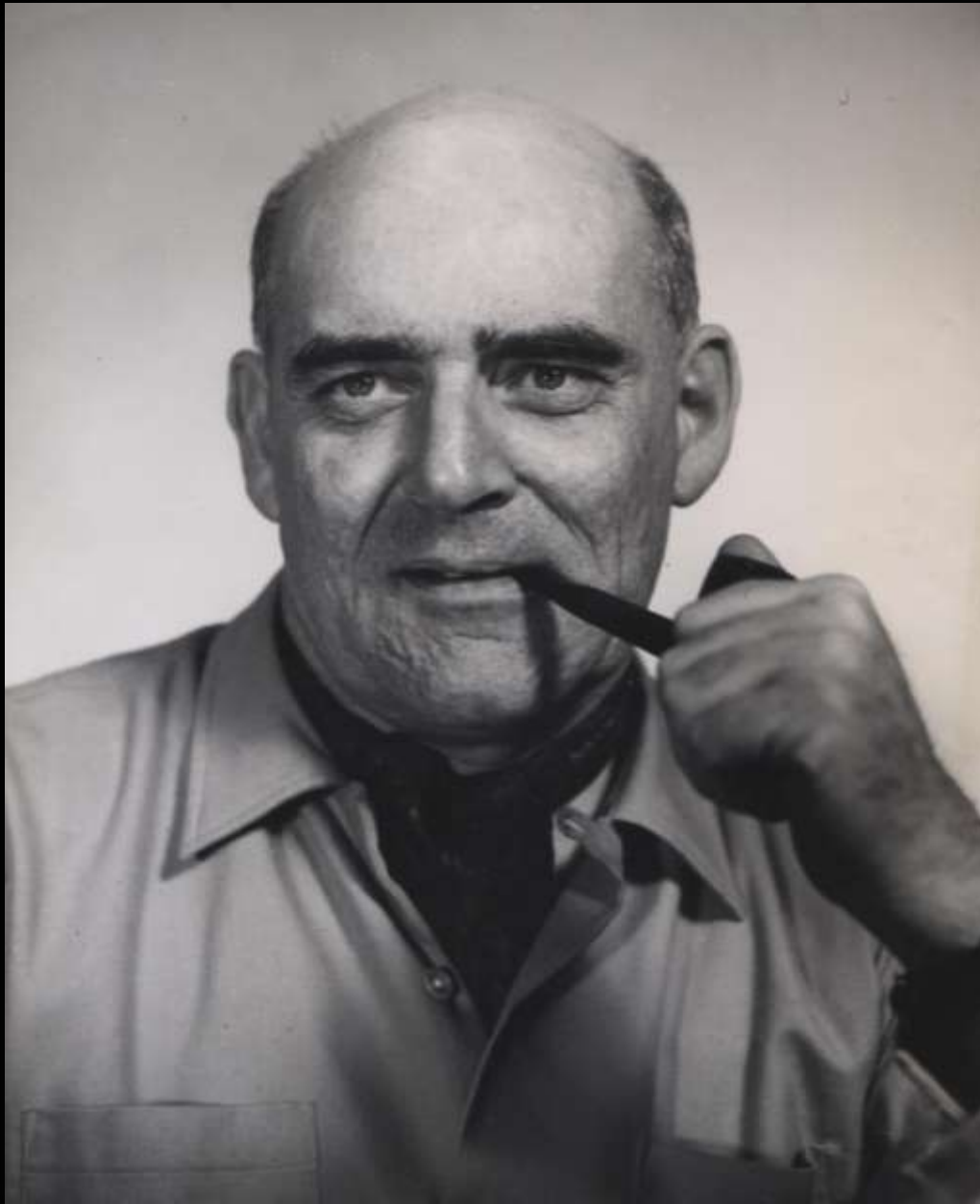


Gates,  
Administration Building  
Equipment Building





The Bicentennial  
and  
Van Dommelen era  
1959-1978



Dirk Van dommel en





Outdoor Air theater





Trenton kennel Club Show





The Nature Center







Knox Grove





The Visitor Center  
And  
The Swan Collection





The Pedestrian Crossing



Comfort Stations



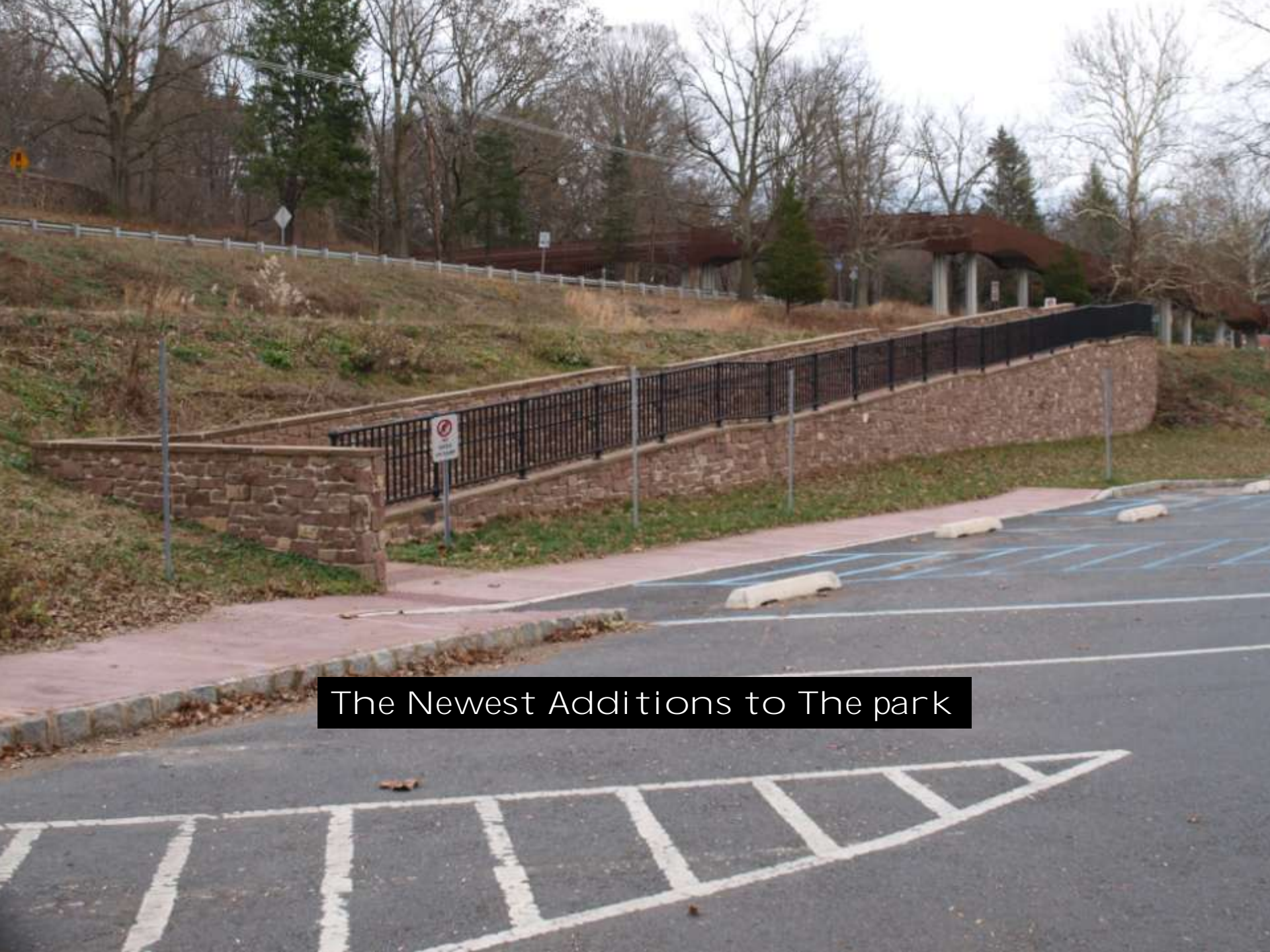
# The Modern Park 1980-2012





Entranceway to The park





The Newest Additions to The park





Park Partnerships

Observatory





# The Annual Reenactment of The Crossing







The Annual Reenactment of The Crossing





The Park Today





William Farkas  
A Man With A Vision For a Book