

Luckman Joins Architect Firm

LOS ANGELES—AP—The former wonder boy of the soap business, Charles Luckman, 40, is starting a new career in the field he was trained for in college. He's going to become an architect.

An announcement by William Pereira, Los Angeles architect, said that Luckman, out of a job

since January when he quit as president of Lever Brothers Company, after a dispute with the firm's British owners, would become his partner.

Luckman, unable to find a job in his chosen profession during the depression, started as a soap salesman at 21 and rose rapidly. He became president of the American branch of Lever Brothers in 1946.

No Delay Seen In Building River Bridge

DEEPWATER, N. J. — AP — No construction delays due to the present international emergency are expected by engineers on the Delaware River Memorial Bridge.

Homer R. Seeley, consulting engineer on the \$40,000,000 span which will link New Jersey and Southern highways, said today the bridge should be open for traffic in July, 1951.

The four-lane bridge will be the fifth largest suspension span in the world.

It will connect the Southern end of the now-building New Jersey Turnpike with a point just South of Wilmington, Del., and relieve one of the worst traffic bottlenecks between New Jersey and Delaware.

Traffic between New York, Baltimore, Washington and Southern points now cross the river at the Pennsville-New Castle ferry, two miles south of the bridge.

Motorists have been compelled to wait in five-mile lines on recent holiday weekends to cross the river via ferry.

On the New Jersey side of the bridge, the New Jersey Turnpike, direct toll road to the George Washington Bridge and New York, will be opened for traffic in November, 1951.

Other connecting highways in New Jersey will be Jersey Routes No. 44 (U. S. 40) to Camden, and No. 48 to Pleasantville and Atlantic City.

The bridge will connect with Delaware's du Pont highway. Across the Chesapeake Bay, near Annapolis, another bridge is rising. When this is completed, traffic experts estimate it will be possible to save four hours traveling time between New York and Washington.

The eastern shore of Maryland also will be made more accessible by auto.

The State of Delaware, which is financing the construction of the bridge, will charge a toll, the rate of which is not yet determined.

However, Delaware authorities have indicated the toll will be lower than the present 93-cent ferry fare.

Uncomfortable Travel

Clipper ships, though fast and seaworthy, were uncomfortable because they took much water on board, according to the Encyclopedia Britannica.

Boys Club Members Leave For Picnic



Some 30 children of the Reservoir Branch of the Trenton Boys Club are pictured as they boarded the bus for an

all-day picnic at Greene's Grove in Washington Crossing State Park. The children were accompanied by Miss

Helen Manning, director of the Summer Fun Club, and Mrs. William Lavery, assistant director.

Peddie Enrolls 9 Trentonians

Nine boys from the Trenton area will attend Peddie School this Fall, according to Clifford E. Timmons, director of admissions at Peddie. Two are new boys at Peddie, while seven were students there last year.

The new students are Edwin V. Bishop, son of Mr. and Mrs. Edwin V. Bishop of 327 Berwyn Avenue, who will enter the freshman year and who last year attended the Parkway School, and Kenneth B. Lewis, son of Mr. and Mrs. Irving H. Lewis of 1431 West State Street, a former student at Solebury School in New Hope, who will be a senior at Peddie.

The seven returning are C. Walter Carroll, son of Dr. and Mrs. C. Walter Carroll of 125 Centre Street, a sophomore; Richard W. Frisbee, son of Mr. and Mrs. Leroy W. Frisbee of 1361 Lawrence Road, a senior; John W. Jahos, son of Mr. and Mrs. William E. Jahos of 43 Hollywood Avenue, president of the senior class this year; Bruce K. Miller, son of Dr. and Mrs. Earle K. Miller of 2524 Nottingham Way, who will be in Form B in the Peddie Junior School; Richard L. Mount, son of Mr. and Mrs. Leon Mount of Baker's Basin, who will be a senior; Eugene H. Strupp, son of Mr. and Mrs. Herman E. Strupp of 28 Stacy Avenue, a sophomore, and Edward R. Woods, son of Mr. and Mrs. James E. Woods of 546 South Clinton Avenue, who will be in the senior class.

Peddie School will open for its 86th academic year on September 19 when old students will register. New boys will register on September 20 and classes will begin on Thursday, September 21.

Gombroon Ware

China ware was called gombroon ware until 1640, after a trading post on the Persian Gulf, through which porcelains were shipped to the Western world from China.

BRAKES ADJUSTED

TRENTON BRAKES

Brake Specialists
1242 Princeton Ave.
at Calhoun St.
4-1103

JACOBY ON CANASTA

By Oswald Jacoby
Written for NEA Service

Judging by my mail, the \$64 canasta question still is, "What is the penalty for putting down cards for the initial meld and then finding that the count is insufficient?"

Enough readers still seem to be confused on this subject to make it worthwhile to go over the penalty again. If you are one of the dozen or so people who understands this point completely or one of the two or three people who never makes an insufficient meld, I trust you will forgive me for wasting your time with some articles on this subject. If you are one of the great majority I recommend strongly that you save these articles and know exactly what to do when this happens next.

As a starter there is no penalty at all unless you are playing in a partnership game. The reason is that when you put cards on the table illegally you are helping the other players. If you have no partner you are merely

helping your opponents and that in itself is enough penalty. However, when you have a partner you may gain an advantage by showing some of your cards illegally. Hence there must be some penalty.

The penalty is that the cards placed on the table illegally become what is known as penalty cards. As such they must remain on the table as penalty cards until they are either melded legally or discarded.

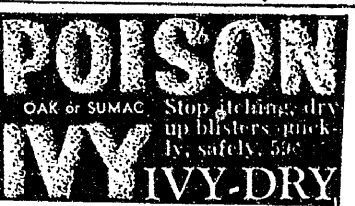
The process of discarding them is somewhat painful. The rule is that you must discard one of them at each turn and cannot discard from your hand proper as long as you have cards on the table in penalty status.

Therefore, if you have penalty cards you want to get in position to meld them legally as soon as you can. You can do this by being lucky enough to draw cards that will enable you to make a legal sufficient meld. In that case you add these extra

Idea Lays Golden Egg

HONG KONG — AP — Somebody's golden idea laid an egg. Magistrate Hin Shing-Lo yesterday ordered confiscated six dead chickens and the contents of their crops—16 ounces of gold.

The chickens were shipped from Macao to Hong Kong. Their unknown owner didn't show up.



PURCELL'S

DO YOUR FEET HURT?

YOU May Need ARCH-SUPPORT SHOES



Doctors' Prescriptions Carefully Filled!

PURCELL'S

Shoe Store
12 So. Warren St.
"Just Below State St."
"28 Years Specializing in Fitting Shoes"

Let our experts Remodel your out-of-date Jewelry!...

*EXPERT REPAIRS, TOO!

"The Corner Store"

hamilton Jewelers

Est. 1912

24 NORTH BROAD ST.
at the Corner of Hanover

TUESDAY SPECIALS!

SEARS
ROEBUCK AND CO.

Your Choice

\$1 ea.

A. Strainer Pan
B. Frying Pan
C. Dishpan
D. 3-pc. Saucepan Set

ALUMINUM WARE

- A. Strainer Pan
- B. Frying Pan
- C. Dishpan
- D. 3-pc. Saucepan Set

IRONING BOARD
Lightweight Wood

MAID OF HONOR BRAND

3.29 ea.

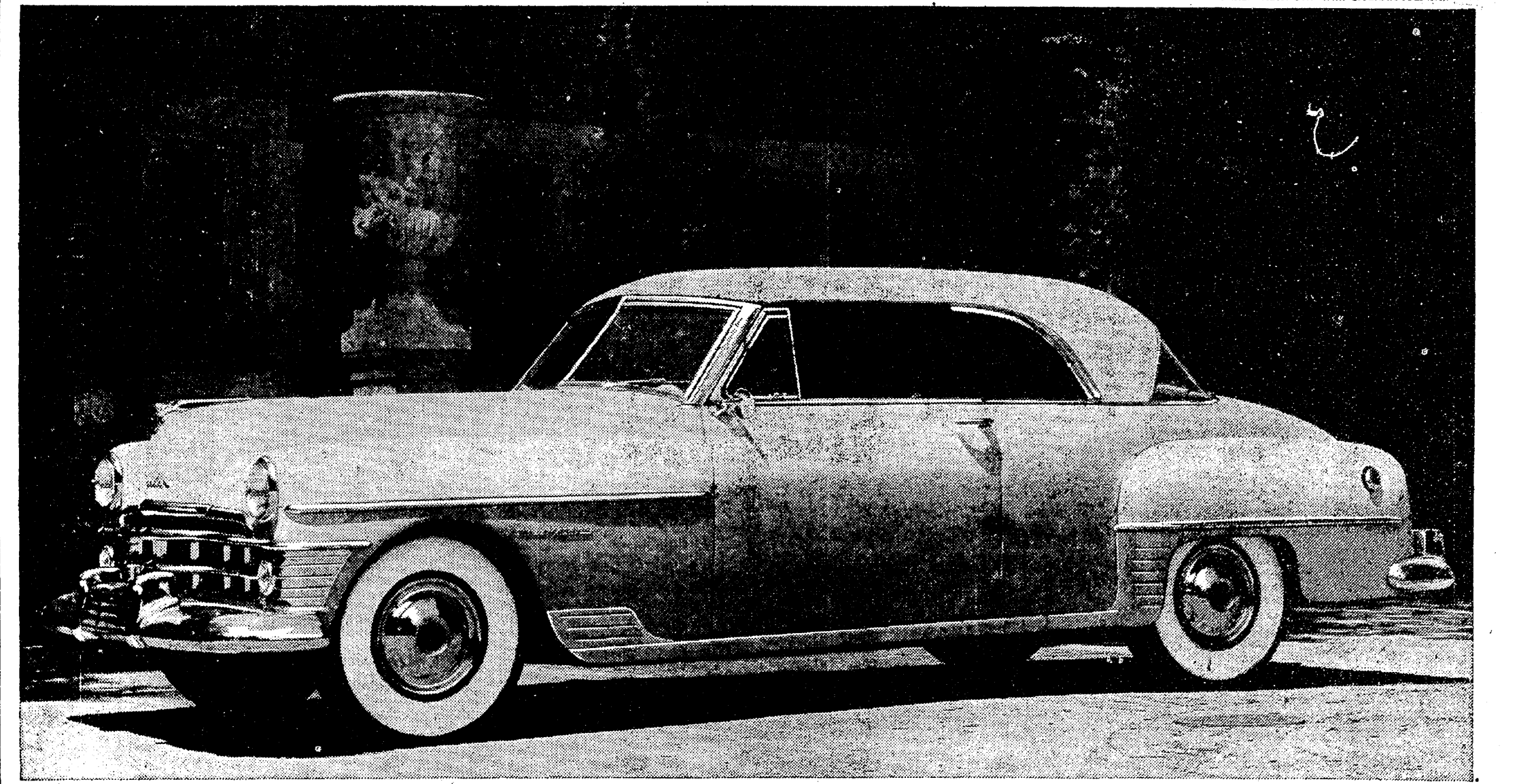
Smooth top securely fastened to strong wood understructure. Steel rods for extra support. 15x34-in. top; 32-in. high.

<p>Canning Set</p> <p>1.39 set</p> <p>3-pc. set for standard pt., qt. or 1/2-gal. jars. With jar lifter and cap wrench.</p>	<p>Enamelled Canner</p> <p>1.89 ea.</p> <p>Can fruits, vegetables easier, quicker. Covered kettle holds 7-qt. jars. Wire rack.</p>
<p>Mason Jar Wrench</p> <p>39c ea.</p> <p>Lifts hot jars without burning fingers. General Tightens quickly, unscrews easily!</p>	<p>Mason Jar Rubbers</p> <p>5c doz.</p> <p>Package of 12 red Mason jar rubbers—a real necessity during your canning season!</p>

Satisfaction guaranteed or your money back! **SEARS** Car. S. Stockton & E. Front Sts. FREE PARKING Phone 2-3421

Step in... step up in the world!

This is the Chrysler New Yorker Newport... the original "hard-top" convertible... the car that started today's smartest trend in design. But you've only to see it and drive it to realize that there still is not another car like it. No car regardless of price can match the luxury of the materials and appointments in the lovely interiors. Even the Clearbac rear window still stands alone for grace, beauty, and exceptional driver vision. And there's built-in value all the way through without equal. Built-in value that will make you a Chrysler buyer from now on. Quality... craftsmanship... engineering... that mean you invest not only in prestige and pleasure, but in lasting satisfaction as well. See this car or any one of the 21 body styles available today!



<p>See it—drive it... there's built-in value all the way through!</p>	<p>Chrysler Driving Advantages:</p> <p><i>Prestomatic Fluid Drive Transmission</i>... automatic gear shifting with exclusive car control.</p> <p><i>High Compression Spiffy Engine</i>... extra power at all speeds. Superfinished parts for longer life. Chemically treated cylinder walls for far greater wear!</p> <p><i>Waterproof Ignition System</i>... prevents stalling in flood or storm—starts in dampest weather.</p> <p><i>Full Flow Oil Filter</i> keeps oil clean longer.</p>	<p>Chrysler Comfort Advantages:</p> <p><i>Chair Height Seats</i>... no crouching on the floor, no jackknifed discomfort.</p> <p><i>Functional Design</i>... full room for your head, legs, shoulders. Easy to enter and leave.</p> <p><i>Castor-arm Steering</i>... minimizes road shock, eliminates wheel flit.</p> <p><i>Rubber Body Mountings</i>... Floating Power... eliminate vibration, help coordinate spring and shock absorber action, give softest, smoothest ride in history.</p>	<p>Chrysler Safety Advantages:</p> <p><i>Safety Rim Wheels</i>... won't throw tires after blow-outs at normal speeds.</p> <p><i>Constant Speed Windshield Wipers</i>... electrically operated—won't slow down when you step on gas.</p> <p><i>Safe Guard Hydraulic Brakes</i>... exclusive balanced brake power, smoother stops, less pedal pressure.</p> <p><i>CYCLEBOND linings</i> for double the wear. Full vision... unobstructed view wherever you need it.</p>
--	--	--	--

The Beautiful **CHRYSLER** with Fluid Drive

CAPITOL MOTORS, INC., 605 S. Broad St. Cor. 3rd. St.

Open evenings till 9, Sunday 11-4

Your Neighborhood CHRYSLER-PLYMOUTH Dealer